

Product Datasheet

Human NTB-A/SLAMF6/CD352 ELISA Kit (Colorimetric) NBP2-80354

Unit Size: 1 Kit

Storage is content dependent.

www.novusbio.com



technical@novusbio.com

Protocols, Publications, Related Products, Reviews, Research Tools and Images at:
www.novusbio.com/NBP2-80354

Updated 8/18/2025 v.20.1

Earn rewards for product
reviews and publications.

Submit a publication at www.novusbio.com/publications

Submit a review at www.novusbio.com/reviews/destination/NBP2-80354



NBP2-80354**Human NTB-A/SLAMF6/CD352 ELISA Kit (Colorimetric)****Product Information**

Unit Size	1 Kit
Concentration	Concentration is not relevant for this product. Please see the protocols for proper use of this product.
Storage	Storage is content dependent.
Conjugate	HRP

Product Description

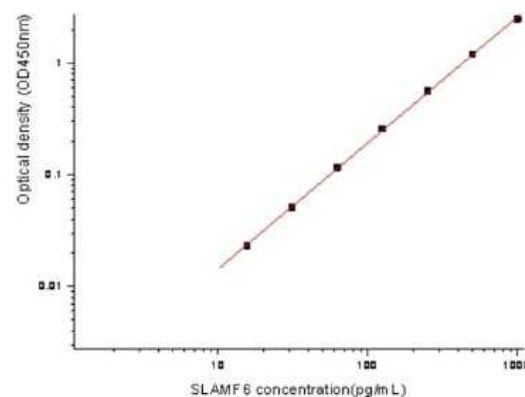
Gene ID	114836
Gene Symbol	SLAMF6
Species	Human
Specificity/Sensitivity	Recognizes both recombinant and natural Human NTB-A/SLAMF6/CD352.
Kit Components	1. 96 well microplate coated with Capture Antibody, 2. Detection Antibody conjugated to HRP, 3. Standards, 4. Wash Buffer Concentrate, 5. Dilution Buffer Concentrate, 6. Color Reagent A, 7. Color Reagent B, 8. Stop Solution
Standard Curve Range	15.63-1000 pg/ml (example only; lot dependent)
Sensitivity	12.7 pg/ml
Inter Assay	CV% < 5.2 %
Intra Assay	CV% < 2
Assay Type	Sandwich ELISA
Spiking Recovery	73%-77%
Suitable Sample Type	Recombinant protein
Sample Volume	100 ul

Product Application Details

Applications	ELISA, Sandwich ELISA
Recommended Dilutions	ELISA, Sandwich ELISA

Images

ELISA: Human NTB-A/SLAMF6/CD352 ELISA Kit (Colorimetric) [NBP2-80354] - Example standard curve for Human NTB-A/SLAMF6/CD352 ELISA Kit (Colorimetric). These standard curves are provided for demonstration only. A standard curve should be generated for each set of samples assayed.





Novus Biologicals USA

10730 E. Briarwood Avenue
Centennial, CO 80112
USA
Phone: 303.730.1950
Toll Free: 1.888.506.6887
Fax: 303.730.1966
nb-customerservice@bio-techne.com

Bio-Techne Canada

21 Canmotor Ave
Toronto, ON M8Z 4E6
Canada
Phone: 905.827.6400
Toll Free: 855.668.8722
Fax: 905.827.6402
canada.inquires@bio-techne.com

Bio-Techne Ltd

19 Barton Lane
Abingdon Science Park
Abingdon, OX14 3NB, United Kingdom
Phone: (44) (0) 1235 529449
Free Phone: 0800 37 34 15
Fax: (44) (0) 1235 533420
info.EMEA@bio-techne.com

General Contact Information

www.novusbio.com
Technical Support: nb-technical@bio-techne.com
Orders: nb-customerservice@bio-techne.com
General: novus@novusbio.com

Products Related to NBP2-80354

NBP2-49002PEP	NTB-A/SLAMF6/CD352 Recombinant Protein Antigen
285-IF-100	IFN-gamma [Unconjugated]
MAB19081	NTB-A/SLAMF6/CD352 Antibody (292811) [Unconjugated]
MAB139-100	NKG2D/CD314 Antibody (149810) [Unconjugated]

Limitations

This product is for research use only and is not approved for use in humans or in clinical diagnosis. ELISA Kits are guaranteed for 6 months from date of receipt.

For more information on our 100% guarantee, please visit www.novusbio.com/guarantee

Earn gift cards/discounts by submitting a review: www.novusbio.com/reviews/submit/NBP2-80354

Earn gift cards/discounts by submitting a publication using this product:
www.novusbio.com/publications

