

Product Datasheet

Human Prolactin R ELISA Kit (Colorimetric) NBP2-80346

Unit Size: 1 Kit

Storage is content dependent.

www.novusbio.com



technical@novusbio.com

Protocols, Publications, Related Products, Reviews, Research Tools and Images at:
www.novusbio.com/NBP2-80346

Updated 9/5/2023 v.20.1

Earn rewards for product
reviews and publications.

Submit a publication at www.novusbio.com/publications

Submit a review at www.novusbio.com/reviews/destination/NBP2-80346



NBP2-80346**Human Prolactin R ELISA Kit (Colorimetric)**

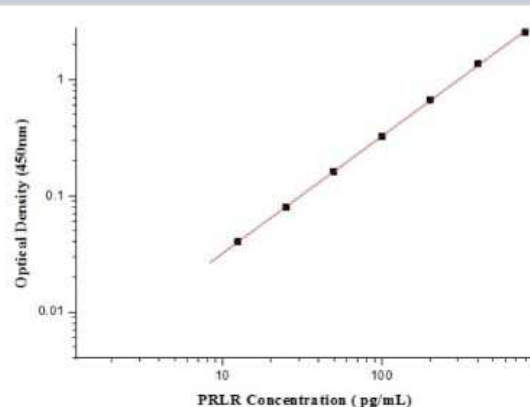
Product Information	
Unit Size	1 Kit
Concentration	Concentration is not relevant for this product. Please see the protocols for proper use of this product.
Storage	Storage is content dependent.
Conjugate	HRP

Product Description	
Gene ID	5618
Gene Symbol	PRLR
Species	Human
Specificity/Sensitivity	Recognizes both recombinant and natural Human Prolactin R.
Kit Components	1. 96 well microplate coated with Capture Antibody, 2. Detection Antibody conjugated to HRP, 3. Standards, 4. Wash Buffer Concentrate, 5. Dilution Buffer Concentrate, 6. Color Reagent A, 7. Color Reagent B, 8. Stop Solution
Standard Curve Range	12.5-800 pg/ml (example only; lot dependent)
Sensitivity	1.7 pg/ml
Inter Assay	CV% < 6.9 %
Intra Assay	CV% < 4.6
Assay Type	Sandwich ELISA
Spiking Recovery	103 -127%
Suitable Sample Type	Serum
Sample Volume	100 ul

Product Application Details	
Applications	ELISA, Sandwich ELISA
Recommended Dilutions	ELISA, Sandwich ELISA

Images

ELISA: Human Prolactin R ELISA Kit (Colorimetric) [NBP2-80346] - Example standard curve for Human Prolactin R ELISA Kit (Colorimetric). These standard curves are provided for demonstration only. A standard curve should be generated for each set of samples assayed.





Novus Biologicals USA

10730 E. Briarwood Avenue
Centennial, CO 80112
USA
Phone: 303.730.1950
Toll Free: 1.888.506.6887
Fax: 303.730.1966
nb-customerservice@bio-techne.com

Bio-Techne Canada

21 Canmotor Ave
Toronto, ON M8Z 4E6
Canada
Phone: 905.827.6400
Toll Free: 855.668.8722
Fax: 905.827.6402
canada.inquires@bio-techne.com

Bio-Techne Ltd

19 Barton Lane
Abingdon Science Park
Abingdon, OX14 3NB, United Kingdom
Phone: (44) (0) 1235 529449
Free Phone: 0800 37 34 15
Fax: (44) (0) 1235 533420
info.EMEA@bio-techne.com

General Contact Information

www.novusbio.com
Technical Support: nb-technical@bio-
techne.com
Orders: nb-customerservice@bio-techne.com
General: novus@novusbio.com

Products Related to NBP2-80346

291-G1-200	IGF-I/IGF-1 [Unconjugated]
NB300-561	Prolactin R Antibody (U5)
AF2168	STAT5a/b Antibody [Unconjugated] - Pan Specific
MAB1417	Insulin Antibody (182410) [Unconjugated]

Limitations

This product is for research use only and is not approved for use in humans or in clinical diagnosis. ELISA Kits are guaranteed for 6 months from date of receipt.

For more information on our 100% guarantee, please visit www.novusbio.com/guarantee

Earn gift cards/discounts by submitting a review: www.novusbio.com/reviews/submit/NBP2-80346

Earn gift cards/discounts by submitting a publication using this product:
www.novusbio.com/publications

