

# Product Datasheet

## Human Kallikrein 11 ELISA Kit (Colorimetric) NBP2-80322

Unit Size: 1 Kit

Storage is content dependent.

[www.novusbio.com](http://www.novusbio.com)



[technical@novusbio.com](mailto:technical@novusbio.com)

Protocols, Publications, Related Products, Reviews, Research Tools and Images at:  
[www.novusbio.com/NBP2-80322](http://www.novusbio.com/NBP2-80322)

Updated 2/3/2025 v.20.1

Earn rewards for product  
reviews and publications.

Submit a publication at [www.novusbio.com/publications](http://www.novusbio.com/publications)

Submit a review at [www.novusbio.com/reviews/destination/NBP2-80322](http://www.novusbio.com/reviews/destination/NBP2-80322)



**NBP2-80322****Human Kallikrein 11 ELISA Kit (Colorimetric)**

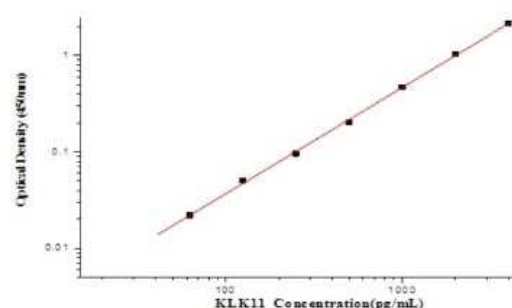
<b>Product Information</b>	
<b>Unit Size</b>	1 Kit
<b>Concentration</b>	Concentration is not relevant for this product. Please see the protocols for proper use of this product.
<b>Storage</b>	Storage is content dependent.
<b>Conjugate</b>	HRP

<b>Product Description</b>	
<b>Gene ID</b>	11012
<b>Gene Symbol</b>	KLK11
<b>Species</b>	Human
<b>Specificity/Sensitivity</b>	Recognizes both recombinant and natural Human Kallikrein 11.
<b>Kit Components</b>	1. 96 well microplate coated with Capture Antibody, 2. Detection Antibody conjugated to HRP, 3. Standards, 4. Wash Buffer Concentrate, 5. Dilution Buffer Concentrate, 6. Color Reagent A, 7. Color Reagent B, 8. Stop Solution
<b>Standard Curve Range</b>	62.5-4000 pg/ml (example only; lot dependent)
<b>Sensitivity</b>	8.96 pg/ml
<b>Inter Assay</b>	CV% < 7 %
<b>Intra Assay</b>	CV% < 3.3
<b>Assay Type</b>	Sandwich ELISA
<b>Spiking Recovery</b>	87-100%
<b>Suitable Sample Type</b>	Recombinant protein
<b>Sample Volume</b>	100 ul

<b>Product Application Details</b>	
<b>Applications</b>	ELISA, Sandwich ELISA
<b>Recommended Dilutions</b>	ELISA, Sandwich ELISA

**Images**

ELISA: Human Kallikrein 11 ELISA Kit (Colorimetric) [NBP2-80322] - Example standard curve for Human Kallikrein 11 ELISA Kit (Colorimetric). These standard curves are provided for demonstration only. A standard curve should be generated for each set of samples assayed.





### **Novus Biologicals USA**

10730 E. Briarwood Avenue  
Centennial, CO 80112  
USA  
Phone: 303.730.1950  
Toll Free: 1.888.506.6887  
Fax: 303.730.1966  
nb-customerservice@bio-techne.com

### **Bio-Techne Canada**

21 Canmotor Ave  
Toronto, ON M8Z 4E6  
Canada  
Phone: 905.827.6400  
Toll Free: 855.668.8722  
Fax: 905.827.6402  
canada.inquires@bio-techne.com

### **Bio-Techne Ltd**

19 Barton Lane  
Abingdon Science Park  
Abingdon, OX14 3NB, United Kingdom  
Phone: (44) (0) 1235 529449  
Free Phone: 0800 37 34 15  
Fax: (44) (0) 1235 533420  
info.EMEA@bio-techne.com

### **General Contact Information**

www.novusbio.com  
Technical Support: nb-technical@bio-techne.com  
Orders: nb-customerservice@bio-techne.com  
General: novus@novusbio.com

### **Products Related to NBP2-80322**

---

NB500-180	Kif2a Antibody
AF1595	Kallikrein 11 Antibody [Unconjugated]
H00005324-M02-50ug	PLAG1 Antibody (3B7) - Azide and BSA Free
DKK300	Kallikrein 3/PSA [HRP]

---

### **Limitations**

This product is for research use only and is not approved for use in humans or in clinical diagnosis. ELISA Kits are guaranteed for 6 months from date of receipt.

For more information on our 100% guarantee, please visit [www.novusbio.com/guarantee](http://www.novusbio.com/guarantee)

Earn gift cards/discounts by submitting a review: [www.novusbio.com/reviews/submit/NBP2-80322](http://www.novusbio.com/reviews/submit/NBP2-80322)

Earn gift cards/discounts by submitting a publication using this product:  
[www.novusbio.com/publications](http://www.novusbio.com/publications)

