

Product Datasheet

TIM-1/KIM-1/HAVCR Antibody Pair [HRP] NBP2-79614-15Plates

Unit Size: 15 Plates

Storage of components varies. See protocol for specific instructions.

www.novusbio.com



technical@novusbio.com

Protocols, Publications, Related Products, Reviews, Research Tools and Images at:
www.novusbio.com/NBP2-79614

Updated 4/16/2024 v.20.1

Earn rewards for product
reviews and publications.

Submit a publication at www.novusbio.com/publications

Submit a review at www.novusbio.com/reviews/destination/NBP2-79614



NBP2-79614-15Plates

TIM-1/KIM-1/HAVCR Antibody Pair [HRP]

Product Information

Unit Size	15 Plates
Concentration	Concentration of individual antibodies may be found on the vial label. If unlisted please contact technical services.
Storage	Storage of components varies. See protocol for specific instructions.
Conjugate	HRP

Product Description

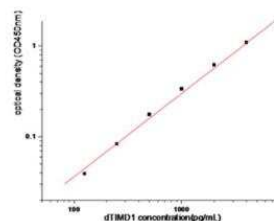
Description	Solid Phase sandwich ELISA for the quantitative determination of Canine TIM-1/KIM-1/HAVCR.
Gene Symbol	HAVCR1
Species	Canine
Specificity/Sensitivity	This solid phase sandwich ELISA utilizes a monoclonal antibody specific for Canine TIM-1/KIM-1/HAVCR.
Kit Components	Capture Antibody: NBP2-90824, Detection Antibody: NBP2-90822, Standard
Standard Curve Range	125-8000 pg/ml (example only; lot dependent)
Sensitivity	125 pg/ml (example only; lot dependent)
Assay Type	Sandwich ELISA
Sample Volume	100 ul

Product Application Details

Applications	ELISA, Sandwich ELISA
Recommended Dilutions	ELISA, Sandwich ELISA

Images

Sandwich ELISA: TIM-1/KIM-1/HAVCR Antibody Pair [HRP] [NBP2-79614] - This standard curve is only for demonstration purposes. A standard curve should be generated for each assay.



Concentration (pg/ml)	Zero standard subtracted OD
0	0
125	0.039
250	0.083
500	0.176
1000	0.336
2000	0.619
4000	1.089
8000	1.757





Novus Biologicals USA

10730 E. Briarwood Avenue
Centennial, CO 80112
USA
Phone: 303.730.1950
Toll Free: 1.888.506.6887
Fax: 303.730.1966
nb-customerservice@bio-techne.com

Bio-Techne Canada

21 Canmotor Ave
Toronto, ON M8Z 4E6
Canada
Phone: 905.827.6400
Toll Free: 855.668.8722
Fax: 905.827.6402
canada.inquires@bio-techne.com

Bio-Techne Ltd

19 Barton Lane
Abingdon Science Park
Abingdon, OX14 3NB, United Kingdom
Phone: (44) (0) 1235 529449
Free Phone: 0800 37 34 15
Fax: (44) (0) 1235 533420
info.EMEA@bio-techne.com

General Contact Information

www.novusbio.com
Technical Support: nb-technical@bio-techne.com
Orders: nb-customerservice@bio-techne.com
General: novus@novusbio.com

Products Related to NBP2-79614-15Plates

NB100-56421PEP	TIM-1/KIM-1/HAVCR Antibody Blocking Peptide
AF1817	TIM-1/KIM-1/HAVCR Antibody [Unconjugated]

Limitations

This product is for research use only and is not approved for use in humans or in clinical diagnosis. Antibody Pairs are guaranteed for 6 months from date of receipt.

For more information on our 100% guarantee, please visit www.novusbio.com/guarantee

Earn gift cards/discounts by submitting a review: www.novusbio.com/reviews/submit/NBP2-79614

Earn gift cards/discounts by submitting a publication using this product:
www.novusbio.com/publications

