

Product Datasheet

CCL23/Ck beta 8-1/MIP3 Antibody Pair [HRP] NBP2-79501-15Plates

Unit Size: 15 Plates

Storage of components varies. See protocol for specific instructions.

www.novusbio.com



technical@novusbio.com

Protocols, Publications, Related Products, Reviews, Research Tools and Images at:
www.novusbio.com/NBP2-79501

Updated 4/16/2024 v.20.1

Earn rewards for product
reviews and publications.

Submit a publication at www.novusbio.com/publications

Submit a review at www.novusbio.com/reviews/destination/NBP2-79501



NBP2-79501-15Plates**CCL23/Ck beta 8-1/MIP3 Antibody Pair [HRP]****Product Information**

| | |
|----------------------|---|
| Unit Size | 15 Plates |
| Concentration | Concentration of individual antibodies may be found on the vial label. If unlisted please contact technical services. |
| Storage | Storage of components varies. See protocol for specific instructions. |
| Conjugate | HRP |

Product Description

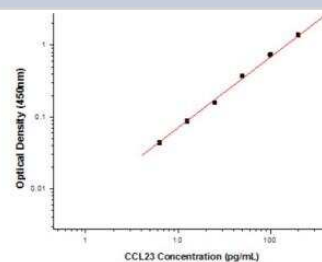
| | |
|--------------------------------|---|
| Description | Solid Phase sandwich ELISA for the quantitative determination of Human CCL23/Ck beta 8-1/MIP3. |
| Gene Symbol | CCL23 |
| Species | Human |
| Specificity/Sensitivity | This solid phase sandwich ELISA utilizes an antibody specific for Human CCL23/Ck beta 8-1/MIP3. |
| Kit Components | Capture Antibody: NBP2-89591, Detection Antibody, Standard |
| Standard Curve Range | 6.25-400 pg/ml (example only; lot dependent) |
| Sensitivity | 6.25 pg/ml (example only; lot dependent) |
| Assay Type | Sandwich ELISA |
| Sample Volume | 100 ul |

Product Application Details

| | |
|------------------------------|-----------------------|
| Applications | ELISA, Sandwich ELISA |
| Recommended Dilutions | ELISA, Sandwich ELISA |

Images

Sandwich ELISA: CCL23/Ck beta 8-1/MIP3 Antibody Pair [HRP] [NBP2-79501] - This standard curve is only for demonstration purposes. A standard curve should be generated for each assay.



| Concentration (pg/mL) | Zero standard subtracted OD |
|-------------------------|-----------------------------|
| 0 | 0 |
| 6.25 | 0.044 |
| 12.5 | 0.088 |
| 25 | 0.159 |
| 50 | 0.371 |
| 100 | 0.739 |
| 200 | 1.380 |
| 400 | 2.420 |



Novus Biologicals USA

10730 E. Briarwood Avenue
Centennial, CO 80112
USA
Phone: 303.730.1950
Toll Free: 1.888.506.6887
Fax: 303.730.1966
nb-customerservice@bio-techne.com

Bio-Techne Canada

21 Canmotor Ave
Toronto, ON M8Z 4E6
Canada
Phone: 905.827.6400
Toll Free: 855.668.8722
Fax: 905.827.6402
canada.inquires@bio-techne.com

Bio-Techne Ltd

19 Barton Lane
Abingdon Science Park
Abingdon, OX14 3NB, United Kingdom
Phone: (44) (0) 1235 529449
Free Phone: 0800 37 34 15
Fax: (44) (0) 1235 533420
info.EMEA@bio-techne.com

General Contact Information

www.novusbio.com
Technical Support: nb-technical@bio-techne.com
Orders: nb-customerservice@bio-techne.com
General: novus@novusbio.com

Products Related to NBP2-79501-15Plates

| | |
|----------------|--|
| NBP2-35021-5ug | Recombinant Human CCL23/Ck beta 8-1/MIP3 Protein |
| 508-CK-025/CF | CCL23/Ck beta 8-1/MIP3 |

Limitations

This product is for research use only and is not approved for use in humans or in clinical diagnosis. Antibody Pairs are guaranteed for 6 months from date of receipt.

For more information on our 100% guarantee, please visit www.novusbio.com/guarantee

Earn gift cards/discounts by submitting a review: www.novusbio.com/reviews/submit/NBP2-79501

Earn gift cards/discounts by submitting a publication using this product:
www.novusbio.com/publications

