

Product Datasheet

Niemann-Pick type C2 Antibody Pair [HRP] NBP2-79413-15Plates

Unit Size: 15 Plates

Storage of components varies. See protocol for specific instructions.

www.novusbio.com



technical@novusbio.com

Protocols, Publications, Related Products, Reviews, Research Tools and Images at:
www.novusbio.com/NBP2-79413

Updated 4/16/2024 v.20.1

Earn rewards for product
reviews and publications.

Submit a publication at www.novusbio.com/publications

Submit a review at www.novusbio.com/reviews/destination/NBP2-79413



NBP2-79413-15Plates**Niemann-Pick type C2 Antibody Pair [HRP]****Product Information**

Unit Size	15 Plates
Concentration	Concentration of individual antibodies may be found on the vial label. If unlisted please contact technical services.
Storage	Storage of components varies. See protocol for specific instructions.
Conjugate	HRP

Product Description

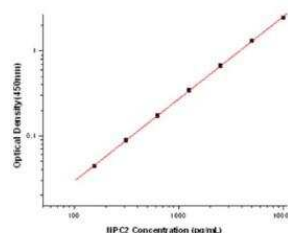
Description	Solid Phase sandwich ELISA for the quantitative determination of Human Niemann-Pick type C2.
Gene Symbol	NPC2
Species	Human
Specificity/Sensitivity	This solid phase sandwich ELISA utilizes a monoclonal antibody specific for Human Niemann-Pick type C2.
Kit Components	Capture Antibody: NBP2-90212, Detection Antibody: NBP2-90211, Standard
Standard Curve Range	156.25-10000 pg/ml (example only; lot dependent)
Sensitivity	156.25 pg/ml (example only; lot dependent)
Assay Type	Sandwich ELISA
Sample Volume	100 ul

Product Application Details

Applications	ELISA, Sandwich ELISA
Recommended Dilutions	ELISA, Sandwich ELISA

Images

Sandwich ELISA: Niemann-Pick type C2 Antibody Pair [HRP] [NBP2-79413] - This standard curve is only for demonstration purposes. A standard curve should be generated for each assay.



Concentration (pg/mL)	Zero standard subtracted OD
0	0
156.25	0.044
312.50	0.088
625	0.172
1250	0.342
2500	0.668
5000	1.323
10000	2.464



Novus Biologicals USA

10730 E. Briarwood Avenue
Centennial, CO 80112
USA
Phone: 303.730.1950
Toll Free: 1.888.506.6887
Fax: 303.730.1966
nb-customerservice@bio-techne.com

Bio-Techne Canada

21 Canmotor Ave
Toronto, ON M8Z 4E6
Canada
Phone: 905.827.6400
Toll Free: 855.668.8722
Fax: 905.827.6402
canada.inquires@bio-techne.com

Bio-Techne Ltd

19 Barton Lane
Abingdon Science Park
Abingdon, OX14 3NB, United Kingdom
Phone: (44) (0) 1235 529449
Free Phone: 0800 37 34 15
Fax: (44) (0) 1235 533420
info.EMEA@bio-techne.com

General Contact Information

www.novusbio.com
Technical Support: nb-technical@bio-techne.com
Orders: nb-customerservice@bio-techne.com
General: novus@novusbio.com

Products Related to NBP2-79413-15Plates

H00010577-P01-10ug	Recombinant Human Niemann-Pick type C2 GST (N-Term) Protein
NBP1-84012	Niemann-Pick type C2 Antibody

Limitations

This product is for research use only and is not approved for use in humans or in clinical diagnosis. Antibody Pairs are guaranteed for 6 months from date of receipt.

For more information on our 100% guarantee, please visit www.novusbio.com/guarantee

Earn gift cards/discounts by submitting a review: www.novusbio.com/reviews/submit/NBP2-79413

Earn gift cards/discounts by submitting a publication using this product:
www.novusbio.com/publications

