

# Product Datasheet

## Lysyl Oxidase Homolog 2/LOXL2 Antibody Pair [HRP] NBP2-79355-15Plates

Unit Size: 15 Plates

Storage of components varies. See protocol for specific instructions.

[www.novusbio.com](http://www.novusbio.com)



[technical@novusbio.com](mailto:technical@novusbio.com)

Protocols, Publications, Related Products, Reviews, Research Tools and Images at:  
[www.novusbio.com/NBP2-79355](http://www.novusbio.com/NBP2-79355)

Updated 4/26/2023 v.20.1

Earn rewards for product  
reviews and publications.

Submit a publication at [www.novusbio.com/publications](http://www.novusbio.com/publications)

Submit a review at [www.novusbio.com/reviews/destination/NBP2-79355](http://www.novusbio.com/reviews/destination/NBP2-79355)



**NBP2-79355-15Plates****Lysyl Oxidase Homolog 2/LOXL2 Antibody Pair [HRP]****Product Information**

<b>Unit Size</b>	15 Plates
<b>Concentration</b>	Concentration of individual antibodies may be found on the vial label. If unlisted please contact technical services.
<b>Storage</b>	Storage of components varies. See protocol for specific instructions.
<b>Conjugate</b>	HRP

**Product Description**

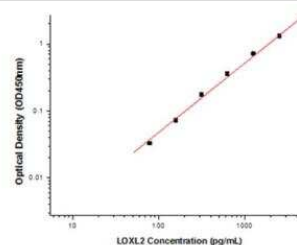
<b>Description</b>	Solid Phase sandwich ELISA for the quantitative determination of Human Lysyl Oxidase Homolog 2/LOXL2.
<b>Gene ID</b>	4017
<b>Gene Symbol</b>	LOXL2
<b>Species</b>	Human
<b>Specificity/Sensitivity</b>	This solid phase sandwich ELISA utilizes an antibody specific for Human Lysyl Oxidase Homolog 2/LOXL2.
<b>Kit Components</b>	Capture Antibody, Detection Antibody, Standard
<b>Standard Curve Range</b>	78.13-5000 pg/ml (example only; lot dependent)
<b>Sensitivity</b>	78.13 pg/ml (example only; lot dependent)
<b>Assay Type</b>	Sandwich ELISA
<b>Sample Volume</b>	100 ul

**Product Application Details**

<b>Applications</b>	ELISA, Sandwich ELISA
<b>Recommended Dilutions</b>	ELISA, Sandwich ELISA

**Images**

Sandwich ELISA: Lysyl Oxidase Homolog 2/LOXL2 Antibody Pair [HRP] [NBP2-79355] - This standard curve is only for demonstration purposes. A standard curve should be generated for each assay.



Concentration (pg/mL)	Zero standard subtracted OD
0	0
78.13	0.033
156.25	0.073
312.5	0.175
625	0.359
1250	0.718
2500	1.309
5000	2.402



### **Novus Biologicals USA**

10730 E. Briarwood Avenue  
Centennial, CO 80112  
USA  
Phone: 303.730.1950  
Toll Free: 1.888.506.6887  
Fax: 303.730.1966  
nb-customerservice@bio-techne.com

### **Bio-Techne Canada**

21 Canmotor Ave  
Toronto, ON M8Z 4E6  
Canada  
Phone: 905.827.6400  
Toll Free: 855.668.8722  
Fax: 905.827.6402  
canada.inquires@bio-techne.com

### **Bio-Techne Ltd**

19 Barton Lane  
Abingdon Science Park  
Abingdon, OX14 3NB, United Kingdom  
Phone: (44) (0) 1235 529449  
Free Phone: 0800 37 34 15  
Fax: (44) (0) 1235 533420  
info.EMEA@bio-techne.com

### **General Contact Information**

www.novusbio.com  
Technical Support: nb-technical@bio-techne.com  
Orders: nb-customerservice@bio-techne.com  
General: novus@novusbio.com

### **Products Related to NBP2-79355-15Plates**

---

NBP2-56739PEP	Lysyl Oxidase Homolog 2/LOXL2 Recombinant Protein Antigen
NB100-105	HIF-1 alpha Antibody (H1alpha67)
NBP1-32954	Lysyl Oxidase Homolog 2/LOXL2 Antibody
DMP900	MMP-9 [HRP]

---

### **Limitations**

This product is for research use only and is not approved for use in humans or in clinical diagnosis. Antibody Pairs are guaranteed for 6 months from date of receipt.

For more information on our 100% guarantee, please visit [www.novusbio.com/guarantee](http://www.novusbio.com/guarantee)

Earn gift cards/discounts by submitting a review: [www.novusbio.com/reviews/submit/NBP2-79355](http://www.novusbio.com/reviews/submit/NBP2-79355)

Earn gift cards/discounts by submitting a publication using this product:  
[www.novusbio.com/publications](http://www.novusbio.com/publications)

