

Product Datasheet

Rat CCL15/MIP-1 delta ELISA Kit (Colorimetric) NBP2-78756

Unit Size: 1 Kit

Storage of components varies. See protocol for specific instructions.

www.novusbio.com



technical@novusbio.com

Protocols, Publications, Related Products, Reviews, Research Tools and Images at:
www.novusbio.com/NBP2-78756

Updated 9/23/2021 v.20.1

Earn rewards for product
reviews and publications.

Submit a publication at www.novusbio.com/publications

Submit a review at www.novusbio.com/reviews/destination/NBP2-78756



NBP2-78756**Rat CCL15/MIP-1 delta ELISA Kit (Colorimetric)**

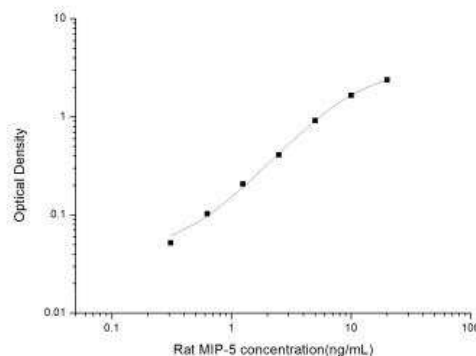
Product Information	
Unit Size	1 Kit
Concentration	Concentration is not relevant for this product. Please see the protocols for proper use of this product.
Storage	Storage of components varies. See protocol for specific instructions.

Product Description	
Gene ID	6359
Gene Symbol	CCL15
Species	Rat
Specificity/Sensitivity	This kit recognizes Rat MIP-5 in samples. No significant cross-reactivity or interference between Rat MIP-5 and analogues was observed.
Kit Components	Micro ELISA Plate(Dismountable), Reference Standard, Concentrated Biotinylated Detection Ab (100×), Concentrated HRP Conjugate (100×), Reference Standard & Sample Diluent, Biotinylated Detection Ab Diluent, HRP Conjugate Diluent, Concentrated Wash Buffer (25×), Substrate Reagent, Stop Solution, Plate Sealer, Product Description, Certificate of Analysis
Standard Curve Range	0.31 - 20 ng/mL
Sensitivity	0.19 ng/mL
Inter Assay	CV% < 5.62%
Intra Assay	CV% < 5.02%
Assay Type	Sandwich-ELISA
Spiking Recovery	84-106%
Suitable Sample Type	Serum, plasma and other biological fluids
Sample Volume	100 uL

Product Application Details	
Applications	ELISA
Recommended Dilutions	ELISA

Images

CCL15/MIP-1 delta [NBP2-78756] - Standard Reference Curve





Novus Biologicals USA

10730 E. Briarwood Avenue
Centennial, CO 80112
USA
Phone: 303.730.1950
Toll Free: 1.888.506.6887
Fax: 303.730.1966
nb-customerservice@bio-techne.com

Bio-Techne Canada

21 Canmotor Ave
Toronto, ON M8Z 4E6
Canada
Phone: 905.827.6400
Toll Free: 855.668.8722
Fax: 905.827.6402
canada.inquires@bio-techne.com

Bio-Techne Ltd

19 Barton Lane
Abingdon Science Park
Abingdon, OX14 3NB, United Kingdom
Phone: (44) (0) 1235 529449
Free Phone: 0800 37 34 15
Fax: (44) (0) 1235 533420
info.EMEA@bio-techne.com

General Contact Information

www.novusbio.com
Technical Support: nb-technical@bio-techne.com
Orders: nb-customerservice@bio-techne.com
General: novus@novusbio.com

Products Related to NBP2-78756

NBP2-35043-5ug	Recombinant Human CCL15/MIP-1 delta Protein
DCP00	CCL2/JE/MCP-1 [HRP]
MAB363	CCL15/MIP-1 delta Antibody (52130) [Unconjugated]
MAB208-100	CXCL8/IL-8 Antibody (6217) [Unconjugated]

Limitations

This product is for research use only and is not approved for use in humans or in clinical diagnosis. ELISA Kits are guaranteed for 6 months from date of receipt.

For more information on our 100% guarantee, please visit www.novusbio.com/guarantee

Earn gift cards/discounts by submitting a review: www.novusbio.com/reviews/submit/NBP2-78756

Earn gift cards/discounts by submitting a publication using this product:
www.novusbio.com/publications

