

# Product Datasheet

## Pancreas Tissue Slides (Liver Cirrhosis)- Paraffin NBP2-78039

Unit Size: 5 Slides

Store at 4C.

[www.novusbio.com](http://www.novusbio.com)



[technical@novusbio.com](mailto:technical@novusbio.com)

Protocols, Publications, Related Products, Reviews, Research Tools and Images at:  
[www.novusbio.com/NBP2-78039](http://www.novusbio.com/NBP2-78039)

Updated 1/9/2024 v.20.1

Earn rewards for product  
reviews and publications.

Submit a publication at [www.novusbio.com/publications](http://www.novusbio.com/publications)

Submit a review at [www.novusbio.com/reviews/destination/NBP2-78039](http://www.novusbio.com/reviews/destination/NBP2-78039)



**NBP2-78039****Pancreas Tissue Slides (Liver Cirrhosis)- Paraffin**

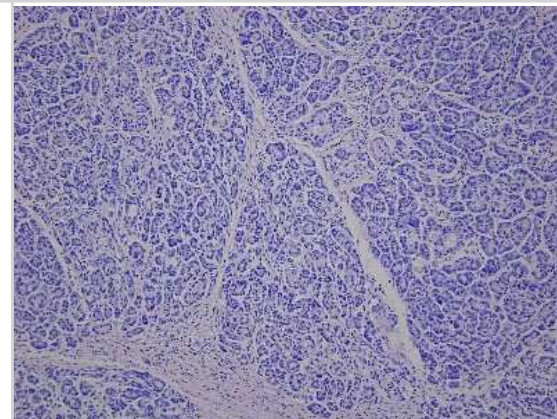
<b>Product Information</b>	
<b>Unit Size</b>	5 Slides
<b>Concentration</b>	Concentration is not relevant for this product. Please see the protocols for proper use of this product.
<b>Storage</b>	Store at 4C.

<b>Product Description</b>	
<b>Description</b>	FFPE tissue slides are ideal for rapid cellular localization of RNA and protein expression.  Tissues were fixed in formalin immediately after excision, and embedded in paraffin. Tissue sections are 5um in thickness, and mounted on positively charged glass slides. At least one of the tissue slides from each lot was stained with H & E for quality assurance.
<b>Species</b>	Human
<b>Notes</b>	Donor information available upon request
<b>Lysate Type</b>	Tissue
<b>Lysate Tissue</b>	Pancreas
<b>Lysate Tissue Condition</b>	Liver Cirrhosis

<b>Product Application Details</b>	
<b>Applications</b>	Hematoxylin and Eosin Stain, Immunohistochemistry, Immunohistochemistry-Paraffin, In-situ Hybridization
<b>Recommended Dilutions</b>	Immunohistochemistry, Immunohistochemistry-Paraffin, In-situ Hybridization, Hematoxylin and Eosin Stain
<b>Application Notes</b>	Each individual tissue spot should be >90% core retention and total core lost from 1 slide should be no more than 5%. Please bake slides at 60C for 30 minutes before use.

**Images**

Hematoxylin & Eosin Stain: Pancreas Tissue Slides (Liver Cirrhosis)  
[NBP2-78039] - Tissue: Human Pancreas, Pathology: Liver Cirrhosis





### **Novus Biologicals USA**

10730 E. Briarwood Avenue  
Centennial, CO 80112  
USA  
Phone: 303.730.1950  
Toll Free: 1.888.506.6887  
Fax: 303.730.1966  
nb-customerservice@bio-techne.com

### **Bio-Techne Canada**

21 Canmotor Ave  
Toronto, ON M8Z 4E6  
Canada  
Phone: 905.827.6400  
Toll Free: 855.668.8722  
Fax: 905.827.6402  
canada.inquires@bio-techne.com

### **Bio-Techne Ltd**

19 Barton Lane  
Abingdon Science Park  
Abingdon, OX14 3NB, United Kingdom  
Phone: (44) (0) 1235 529449  
Free Phone: 0800 37 34 15  
Fax: (44) (0) 1235 533420  
info.EMEA@bio-techne.com

### **General Contact Information**

www.novusbio.com  
Technical Support: nb-technical@bio-techne.com  
Orders: nb-customerservice@bio-techne.com  
General: novus@novusbio.com

### **Products Related to NBP2-78039**

---

NB820-59244	Human Pancreas Whole Tissue Lysate (Adult Whole Normal)
-------------	---

---

### **Limitations**

This product is for research use only and is not approved for use in humans or in clinical diagnosis. Slides are guaranteed for 3 months from date of receipt.

For more information on our 100% guarantee, please visit [www.novusbio.com/guarantee](http://www.novusbio.com/guarantee)

Earn gift cards/discounts by submitting a review: [www.novusbio.com/reviews/submit/NBP2-78039](http://www.novusbio.com/reviews/submit/NBP2-78039)

Earn gift cards/discounts by submitting a publication using this product:  
[www.novusbio.com/publications](http://www.novusbio.com/publications)

