

Product Datasheet

Brain Temporal Lobe Tissue Slides (Parkinson's)- Paraffin NBP2-78008

Unit Size: 5 Slides

Store at 4C.

www.novusbio.com



technical@novusbio.com

Protocols, Publications, Related Products, Reviews, Research Tools and Images at:
www.novusbio.com/NBP2-78008

Updated 1/9/2024 v.20.1

Earn rewards for product
reviews and publications.

Submit a publication at www.novusbio.com/publications

Submit a review at www.novusbio.com/reviews/destination/NBP2-78008



NBP2-78008**Brain Temporal Lobe Tissue Slides (Parkinson's)- Paraffin**

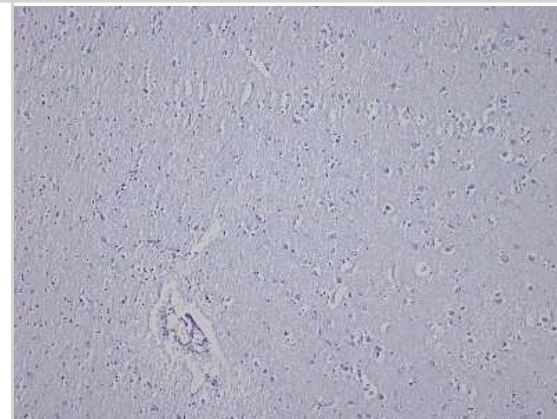
| Product Information | |
|----------------------------|--|
| Unit Size | 5 Slides |
| Concentration | Concentration is not relevant for this product. Please see the protocols for proper use of this product. |
| Storage | Store at 4C. |

| Product Description | |
|--------------------------------|---|
| Description | FFPE tissue slides are ideal for rapid cellular localization of RNA and protein expression. Tissues were fixed in formalin immediately after excision, and embedded in paraffin. Tissue sections are 5um in thickness, and mounted on positively charged glass slides. At least one of the tissue slides from each lot was stained with H & E for quality assurance. |
| Species | Human |
| Notes | Donor information available upon request |
| Lysate Type | Tissue |
| Lysate Tissue | Brain |
| Lysate Tissue Condition | Parkinson's |

| Product Application Details | |
|------------------------------------|--|
| Applications | Hematoxylin and Eosin Stain, Immunohistochemistry, Immunohistochemistry-Paraffin, In-situ Hybridization |
| Recommended Dilutions | Immunohistochemistry, Immunohistochemistry-Paraffin, In-situ Hybridization, Hematoxylin and Eosin Stain |
| Application Notes | Each individual tissue spot should be >90% core retention and total core lost from 1 slide should be no more than 5%. Please bake slides at 60C for 30 minutes before use. |

Images

Hematoxylin & Eosin Stain: Brain Temporal Lobe Tissue Slides (Parkinson's) [NBP2-78008] - Tissue: Human Brain (Temporal Lobe), Pathology: Parkinson's Disease





Novus Biologicals USA

10730 E. Briarwood Avenue
Centennial, CO 80112
USA
Phone: 303.730.1950
Toll Free: 1.888.506.6887
Fax: 303.730.1966
nb-customerservice@bio-techne.com

Bio-Techne Canada

21 Canmotor Ave
Toronto, ON M8Z 4E6
Canada
Phone: 905.827.6400
Toll Free: 855.668.8722
Fax: 905.827.6402
canada.inquires@bio-techne.com

Bio-Techne Ltd

19 Barton Lane
Abingdon Science Park
Abingdon, OX14 3NB, United Kingdom
Phone: (44) (0) 1235 529449
Free Phone: 0800 37 34 15
Fax: (44) (0) 1235 533420
info.EMEA@bio-techne.com

General Contact Information

www.novusbio.com
Technical Support: nb-technical@bio-
techne.com
Orders: nb-customerservice@bio-techne.com
General: novus@novusbio.com

Products Related to NBP2-78008

| | |
|-------------|--|
| NB820-59198 | Human Brain Temporal Lobe Whole Tissue Lysate (Adult Whole Normal) |
|-------------|--|

Limitations

This product is for research use only and is not approved for use in humans or in clinical diagnosis. Slides are guaranteed for 3 months from date of receipt.

For more information on our 100% guarantee, please visit www.novusbio.com/guarantee

Earn gift cards/discounts by submitting a review: www.novusbio.com/reviews/submit/NBP2-78008

Earn gift cards/discounts by submitting a publication using this product:
www.novusbio.com/publications

