

Product Datasheet

Brain Corpus Callosum Tissue Slides (Multiple Sclerosis)- Frozen NBP2-77678

Unit Size: 5 Slides

Store at -70C. Avoid freeze-thaw cycles.

www.novusbio.com



technical@novusbio.com

Protocols, Publications, Related Products, Reviews, Research Tools and Images at:
www.novusbio.com/NBP2-77678

Updated 1/9/2024 v.20.1

Earn rewards for product
reviews and publications.

Submit a publication at www.novusbio.com/publications

Submit a review at www.novusbio.com/reviews/destination/NBP2-77678



NBP2-77678**Brain Corpus Callosum Tissue Slides (Multiple Sclerosis)- Frozen**

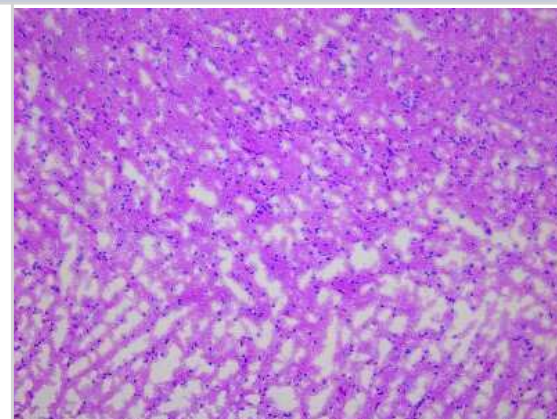
Product Information	
Unit Size	5 Slides
Concentration	Concentration is not relevant for this product. Please see the protocols for proper use of this product.
Storage	Store at -70C. Avoid freeze-thaw cycles.

Product Description	
Description	<p>Frozen tissue slides are ideal for rapid cellular localization of RNA and protein expression, especially for antibodies that don't recognize paraffin embedded tissue.</p> <p>Tissues were snap frozen in liquid nitrogen immediately after excision, and embedded in OCT. The tissue sections are 5-10um in thickness, mounted on positively charged glass slides, and fixed by cold acetone. At least one of the tissue slides from each lot was stained with H & E for quality assurance.</p>
Species	Human
Notes	Donor information available upon request
Lysate Type	Tissue
Lysate Tissue	Brain
Lysate Tissue Condition	Multiple Sclerosis

Product Application Details	
Applications	Hematoxylin and Eosin Stain, Immunohistochemistry, Immunohistochemistry-Frozen, In-situ Hybridization
Recommended Dilutions	Immunohistochemistry, Immunohistochemistry-Frozen, In-situ Hybridization, Hematoxylin and Eosin Stain
Application Notes	Each individual tissue spot should be >90% core retention and total core lost from 1 slide should be no more than 5%

Images

Hematoxylin & Eosin Stain: Brain Corpus Callosum Tissue Slides (Multiple Sclerosis) [NBP2-77678] - Tissue: Human Brain (Corpus Callosum), Pathology: Multiple Sclerosis





Novus Biologicals USA

10730 E. Briarwood Avenue
Centennial, CO 80112
USA
Phone: 303.730.1950
Toll Free: 1.888.506.6887
Fax: 303.730.1966
nb-customerservice@bio-techne.com

Bio-Techne Canada

21 Canmotor Ave
Toronto, ON M8Z 4E6
Canada
Phone: 905.827.6400
Toll Free: 855.668.8722
Fax: 905.827.6402
canada.inquires@bio-techne.com

Bio-Techne Ltd

19 Barton Lane
Abingdon Science Park
Abingdon, OX14 3NB, United Kingdom
Phone: (44) (0) 1235 529449
Free Phone: 0800 37 34 15
Fax: (44) (0) 1235 533420
info.EMEA@bio-techne.com

General Contact Information

www.novusbio.com
Technical Support: nb-technical@bio-
techne.com
Orders: nb-customerservice@bio-techne.com
General: novus@novusbio.com

Products Related to NBP2-77678

NB820-59410	Human Brain Corpus Callosum Whole Tissue Lysate (Adult Whole Parkinson's)
-------------	--

Limitations

This product is for research use only and is not approved for use in humans or in clinical diagnosis. Slides are guaranteed for 3 months from date of receipt.

For more information on our 100% guarantee, please visit www.novusbio.com/guarantee

Earn gift cards/discounts by submitting a review: www.novusbio.com/reviews/submit/NBP2-77678

Earn gift cards/discounts by submitting a publication using this product:
www.novusbio.com/publications

