

# Product Datasheet

## **N6-methyladenosine (m6A) Antibody (RM362)** **NBP2-77425-50ul**

Unit Size: 50 ul

Store at -20C. Avoid freeze-thaw cycles.

[www.novusbio.com](http://www.novusbio.com)



[technical@novusbio.com](mailto:technical@novusbio.com)

Protocols, Publications, Related Products, Reviews, Research Tools and Images at:  
[www.novusbio.com/NBP2-77425](http://www.novusbio.com/NBP2-77425)

Updated 8/27/2023 v.20.1

**Earn rewards for product  
reviews and publications.**

Submit a publication at [www.novusbio.com/publications](http://www.novusbio.com/publications)

Submit a review at [www.novusbio.com/reviews/destination/NBP2-77425](http://www.novusbio.com/reviews/destination/NBP2-77425)



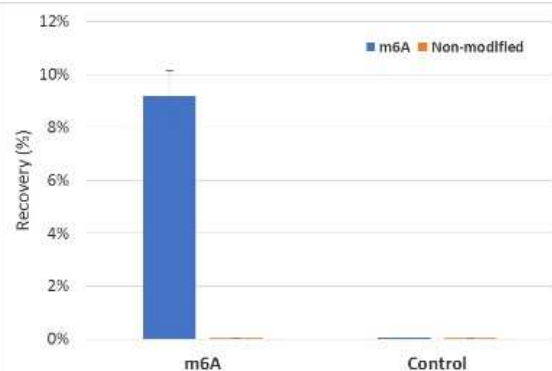
**NBP2-77425-50ul****N6-methyladenosine (m6A) Antibody (RM362)**

<b>Product Information</b>	
<b>Unit Size</b>	50 ul
<b>Concentration</b>	1 mg/ml
<b>Storage</b>	Store at -20C. Avoid freeze-thaw cycles.
<b>Clonality</b>	Monoclonal
<b>Clone</b>	RM362
<b>Preservative</b>	0.09% Sodium Azide
<b>Isotype</b>	IgG
<b>Purity</b>	Protein A purified
<b>Buffer</b>	50% Glycerol/PBS, 1% BSA
<b>Product Description</b>	
<b>Host</b>	Rabbit
<b>Species</b>	Human
<b>Specificity/Sensitivity</b>	This antibody reacts to N6-Methyladenosine (m6A) in both RNA and DNA. No cross reactivity with non-methylated adenosine.
<b>Immunogen</b>	BSA-conjugated N6-methyladenosine (m6A)
<b>Product Application Details</b>	
<b>Applications</b>	Dot Blot, ELISA, Immunoprecipitation
<b>Recommended Dilutions</b>	ELISA 0.1 ug/ml - 3 ug/ml, Immunoprecipitation, Dot Blot 0.5 ug/ml - 2 ug/ml
<b>Application Notes</b>	Can be used in Methylated RNA Immunoprecipitation (recommended dilution 0.2 - 5 ug/ml)

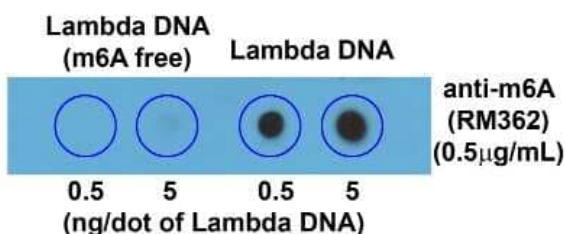


## Images

**Immunoprecipitation: N6-methyladenosine (m6A) Antibody (RM362) [NBP2-77425]** - MeRIP was performed using M6A and control RNA from NEB (E1610). Antibodies (NBP2-77425 and NBP2-77399) were mixed for a short time, with Protein A beads before the addition of m6A labelled and non- labelled RNA (in equal amounts). Captured RNA was then washed, eluted and run through RT-PCR. Resulting cDNA was then analyzed using Realtime PCR with specific probes to m6A labelled and un-labelled sequences.



**Dot Blot: N6-methyladenosine (m6A) Antibody (RM362) [NBP2-77425]** - Dot blot of Lambda DNA without or with m6A, using NBP2-77425. The membrane was pre-spotted with lambda DNA. m6A-free DNA was isolated from bacteriophage lambda grown in an E. coli host-deficient in adenine methylase (dam-).





### **Novus Biologicals USA**

10730 E. Briarwood Avenue  
Centennial, CO 80112  
USA  
Phone: 303.730.1950  
Toll Free: 1.888.506.6887  
Fax: 303.730.1966  
nb-customerservice@bio-techne.com

### **Bio-Techne Canada**

21 Canmotor Ave  
Toronto, ON M8Z 4E6  
Canada  
Phone: 905.827.6400  
Toll Free: 855.668.8722  
Fax: 905.827.6402  
canada.inquires@bio-techne.com

### **Bio-Techne Ltd**

19 Barton Lane  
Abingdon Science Park  
Abingdon, OX14 3NB, United Kingdom  
Phone: (44) (0) 1235 529449  
Free Phone: 0800 37 34 15  
Fax: (44) (0) 1235 533420  
info.EMEA@bio-techne.com

### **General Contact Information**

www.novusbio.com  
Technical Support: nb-technical@bio-  
techne.com  
Orders: nb-customerservice@bio-techne.com  
General: novus@novusbio.com

### **Products Related to NBP2-77425-50ul**

---

HAF008	Goat anti-Rabbit IgG Secondary Antibody [HRP]
NB7160	Goat anti-Rabbit IgG (H+L) Secondary Antibody [HRP]
NBP2-24891	Rabbit IgG Isotype Control

---

### **Limitations**

This product is for research use only and is not approved for use in humans or in clinical diagnosis. Primary Antibodies are guaranteed for 1 year from date of receipt.

For more information on our 100% guarantee, please visit [www.novusbio.com/guarantee](http://www.novusbio.com/guarantee)

Earn gift cards/discounts by submitting a review: [www.novusbio.com/reviews/submit/NBP2-77425](http://www.novusbio.com/reviews/submit/NBP2-77425)

Earn gift cards/discounts by submitting a publication using this product:  
[www.novusbio.com/publications](http://www.novusbio.com/publications)

