

Product Datasheet

Siglec-3/CD33 Antibody (BLR061G) NBP2-77356

Unit Size: 100 ul

Store at 2 - 8 C / 1 year from date of receipt

www.novusbio.com



technical@novusbio.com

Protocols, Publications, Related Products, Reviews, Research Tools and Images at:
www.novusbio.com/NBP2-77356

Updated 12/28/2023 v.20.1

Earn rewards for product
reviews and publications.

Submit a publication at www.novusbio.com/publications

Submit a review at www.novusbio.com/reviews/destination/NBP2-77356



NBP2-77356

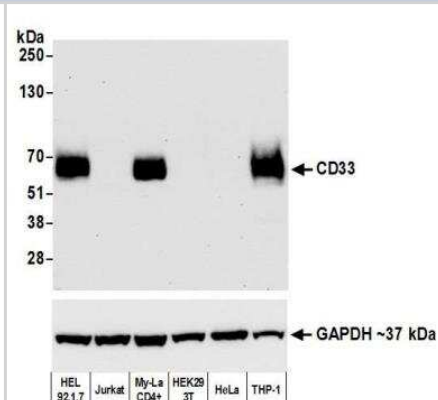
Siglec-3/CD33 Antibody (BLR061G)

Product Information	
Unit Size	100 ul
Concentration	This product is unpurified. The exact concentration of antibody is not quantifiable.
Storage	Store at 2 - 8 C / 1 year from date of receipt
Clonality	Monoclonal
Clone	BLR061G
Preservative	0.09% Sodium Azide
Isotype	IgG
Purity	Tissue culture supernatant
Buffer	Borate Buffered Saline (BBS) pH 8.2 with 0.1% BSA
Product Description	
Host	Rabbit
Gene ID	945
Gene Symbol	CD33
Species	Human
Immunogen	Immunogen was a peptide representing a region between residue 314 and the C-terminus (residue 364) of human Myeloid cell surface antigen CD33 using the numbering given in entry NP_001763.3 (Gene ID 945).
Notes	This Product sold under License from Bethyl Laboratories, Inc.
Product Application Details	
Applications	Western Blot, Immunohistochemistry, Immunohistochemistry-Paraffin, Immunoprecipitation
Recommended Dilutions	Western Blot 1:1000, Immunohistochemistry 1:100 - 1:500, Immunoprecipitation 20 ul/mg lysate, Immunohistochemistry-Paraffin 1:100 - 1:500
Application Notes	Epitope retrieval with citrate buffer pH6.0 is recommended for FFPE sections.

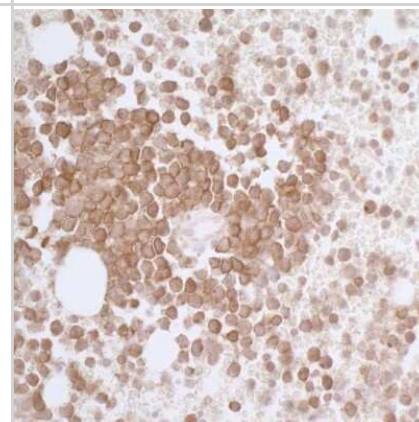


Images

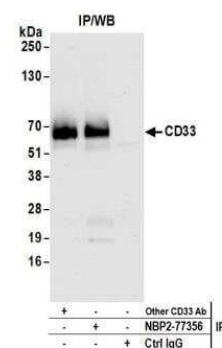
Western Blot: Siglec-3/CD33 Antibody (BLR061G) [NBP2-77356] -
Antibody: Rabbit anti-CD33 recombinant monoclonal [BLR061G] (NBP2-77356). **Secondary:** HRP-conjugated goat anti-rabbit IgG. **Lower Panel:** Rabbit anti-GAPDH.



Immunohistochemistry-Paraffin: Siglec-3/CD33 Antibody (BLR061G) [NBP2-77356] - Section of Acute Myeloid Leukemia (AML). **Antibody:** Rabbit anti-CD33 recombinant monoclonal antibody [BLR061G] (A700-061 lot 1) used at 1:200. **Secondary:** HRP-conjugated goat anti-rabbit IgG (A120-501P). **Substrate:** DAB.



Immunoprecipitation: Siglec-3/CD33 Antibody (BLR061G) [NBP2-77356] - Detection of human CD33 by WB of immunoprecipitates from HEL 92.1.7 lysate. **Antibodies:** Rabbit anti-CD33 recombinant monoclonal [BLR061G] (NBP2-77356) and rabbit anti-CD33 recombinant monoclonal [BL-302-3E10].





Novus Biologicals USA

10730 E. Briarwood Avenue
Centennial, CO 80112
USA
Phone: 303.730.1950
Toll Free: 1.888.506.6887
Fax: 303.730.1966
nb-customerservice@bio-techne.com

Bio-Techne Canada

21 Canmotor Ave
Toronto, ON M8Z 4E6
Canada
Phone: 905.827.6400
Toll Free: 855.668.8722
Fax: 905.827.6402
canada.inquires@bio-techne.com

Bio-Techne Ltd

19 Barton Lane
Abingdon Science Park
Abingdon, OX14 3NB, United Kingdom
Phone: (44) (0) 1235 529449
Free Phone: 0800 37 34 15
Fax: (44) (0) 1235 533420
info.EMEA@bio-techne.com

General Contact Information

www.novusbio.com
Technical Support: nb-technical@bio-techne.com
Orders: nb-customerservice@bio-techne.com
General: novus@novusbio.com

Products Related to NBP2-77356

HAF008	Goat anti-Rabbit IgG Secondary Antibody [HRP]
NB7160	Goat anti-Rabbit IgG (H+L) Secondary Antibody [HRP]
NBP2-24891	Rabbit IgG Isotype Control
NBP2-32709PEP	Siglec-3/CD33 Recombinant Protein Antigen

Limitations

This product is for research use only and is not approved for use in humans or in clinical diagnosis. Primary Antibodies are guaranteed for 1 year from date of receipt.

For more information on our 100% guarantee, please visit www.novusbio.com/guarantee

Earn gift cards/discounts by submitting a review: www.novusbio.com/reviews/submit/NBP2-77356

Earn gift cards/discounts by submitting a publication using this product:
www.novusbio.com/publications

