

Product Datasheet

Lysyl Oxidase Homolog 2/LOXL2 Antibody NBP2-76946

Unit Size: 100 ul

Store at 4C short term. Aliquot and store at -20C long term. Avoid freeze-thaw cycles.

www.novusbio.com



technical@novusbio.com

Protocols, Publications, Related Products, Reviews, Research Tools and Images at:
www.novusbio.com/NBP2-76946

Updated 1/3/2023 v.20.1

Earn rewards for product
reviews and publications.

Submit a publication at www.novusbio.com/publications

Submit a review at www.novusbio.com/reviews/destination/NBP2-76946



NBP2-76946

Lysyl Oxidase Homolog 2/LOXL2 Antibody

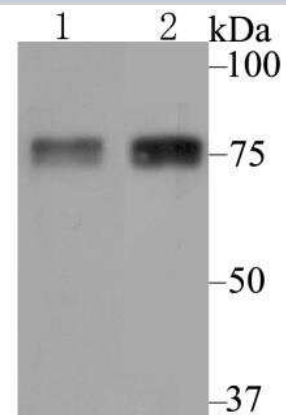
Product Information	
Unit Size	100 ul
Concentration	1 mg/ml
Storage	Store at 4C short term. Aliquot and store at -20C long term. Avoid freeze-thaw cycles.
Clonality	Polyclonal
Preservative	0.05% Sodium Azide
Isotype	IgG
Purity	Immunogen affinity purified
Buffer	PBS (pH7.4), 0.2% BSA, 50% Glycerol
Target Molecular Weight	87 kDa

Product Description	
Host	Rabbit
Gene Symbol	LOXL2
Species	Human, Mouse, Rat
Immunogen	Recombinant protein within human Lysyl Oxidase Homolog 2/LOXL2 aa 300-480. (SwissProt: Q9Y4K0 Human; SwissProt: P58022 Mouse; SwissProt: B5DF27 Rat)

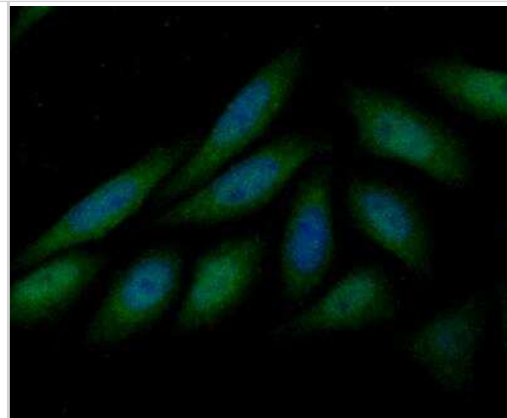
Product Application Details	
Applications	Western Blot, Flow Cytometry, Immunocytochemistry/ Immunofluorescence, Immunohistochemistry, Immunohistochemistry-Paraffin
Recommended Dilutions	Western Blot 1:500-1:1000, Flow Cytometry 1:50-1:100, Immunohistochemistry, Immunocytochemistry/ Immunofluorescence 1:100, Immunohistochemistry-Paraffin 1:50-1:200

Images

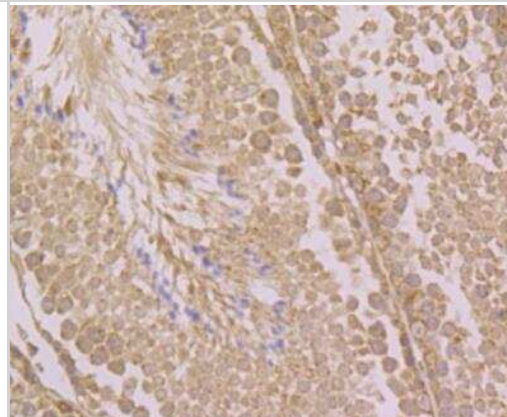
Western Blot: Lysyl Oxidase Homolog 2/LOXL2 Antibody [NBP2-76946]
 - Western blot analysis of LOXL2 on A549 and A431 cell lysate using anti-LOXL2 antibody at 1/500 dilution.



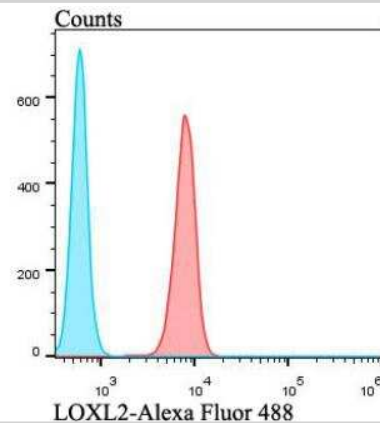
Immunocytochemistry/Immunofluorescence: Lysyl Oxidase Homolog 2/LOXL2 Antibody [NBP2-76946] - ICC staining LOXL2 in SiHa cells (green). The nuclear counter stain is DAPI (blue). Cells were fixed in paraformaldehyde, permeabilised with 0.25% Triton X100/PBS.



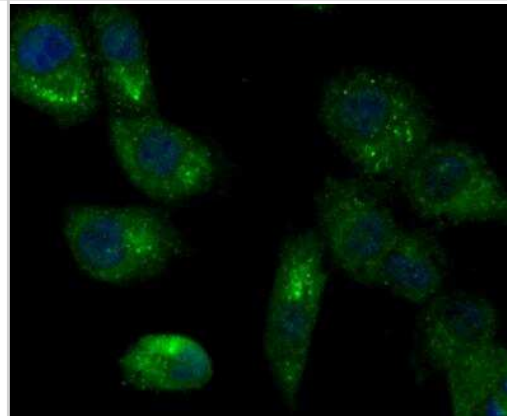
Immunohistochemistry: Lysyl Oxidase Homolog 2/LOXL2 Antibody [NBP2-76946] - Immunohistochemical analysis of paraffin-embedded mouse testis tissue using anti-LOXL2 antibody. Counter stained with hematoxylin. The section was pretreated using heat mediated antigen retrieval with sodium citrate buffer (pH6) for 20 mins.



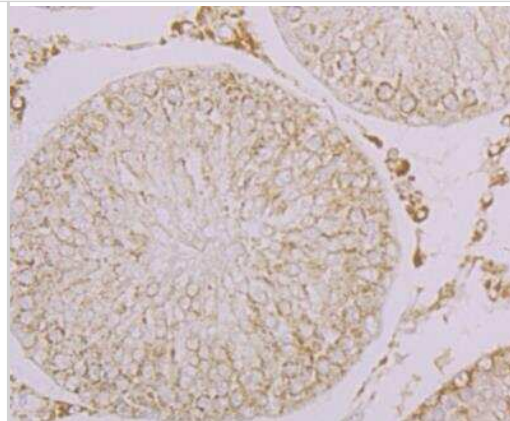
Flow Cytometry: Lysyl Oxidase Homolog 2/LOXL2 Antibody [NBP2-76946] - Flow cytometric analysis of A549 cells with LOXL2 antibody at 1/100 dilution (red) compared with an unlabelled control (cells without incubation with primary antibody; blue). Alexa Fluor 488-conjugated goat anti-rabbit IgG was used as the secondary antibody.



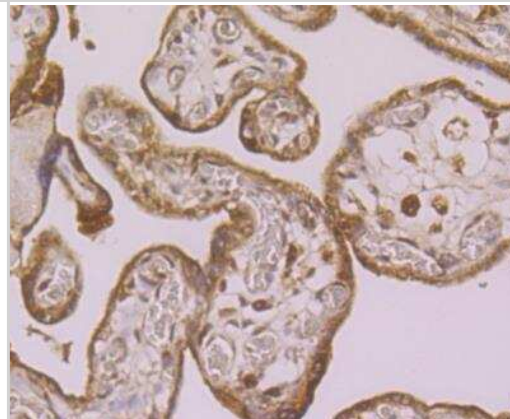
Immunocytochemistry/Immunofluorescence: Lysyl Oxidase Homolog 2/LOXL2 Antibody [NBP2-76946] - ICC staining LOXL2 in A549 cells (green). The nuclear counter stain is DAPI (blue). Cells were fixed in paraformaldehyde, permeabilised with 0.25% Triton X100/PBS.



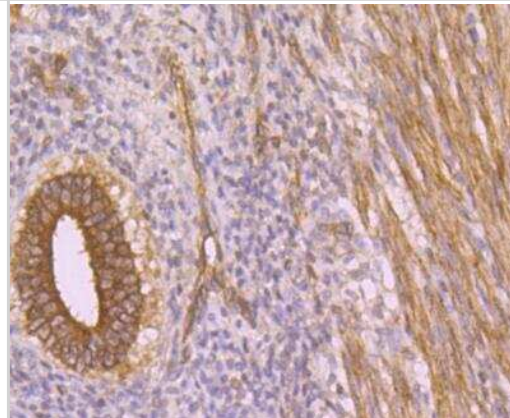
Immunohistochemistry: Lysyl Oxidase Homolog 2/LOXL2 Antibody [NBP2-76946] - Immunohistochemical analysis of paraffin-embedded rat testis tissue using anti-LOXL2 antibody. Counter stained with hematoxylin. The section was pretreated using heat mediated antigen retrieval with sodium citrate buffer (pH6) for 20 mins.



Immunohistochemistry: Lysyl Oxidase Homolog 2/LOXL2 Antibody [NBP2-76946] - Immunohistochemical analysis of paraffin-embedded human placenta tissue using anti-LOXL2 antibody. Counter stained with hematoxylin. The section was pretreated using heat mediated antigen retrieval with sodium citrate buffer (pH6) for 20 mins.



Immunohistochemistry: Lysyl Oxidase Homolog 2/LOXL2 Antibody [NBP2-76946] - Immunohistochemical analysis of paraffin-embedded human uterus tissue using anti-LOXL2 antibody. Counter stained with hematoxylin. The section was pretreated using heat mediated antigen retrieval with sodium citrate buffer (pH6) for 20 mins.





Novus Biologicals USA

10730 E. Briarwood Avenue
Centennial, CO 80112
USA
Phone: 303.730.1950
Toll Free: 1.888.506.6887
Fax: 303.730.1966
nb-customerservice@bio-techne.com

Bio-Techne Canada

21 Canmotor Ave
Toronto, ON M8Z 4E6
Canada
Phone: 905.827.6400
Toll Free: 855.668.8722
Fax: 905.827.6402
canada.inquires@bio-techne.com

Bio-Techne Ltd

19 Barton Lane
Abingdon Science Park
Abingdon, OX14 3NB, United Kingdom
Phone: (44) (0) 1235 529449
Free Phone: 0800 37 34 15
Fax: (44) (0) 1235 533420
info.EMEA@bio-techne.com

General Contact Information

www.novusbio.com
Technical Support: nb-technical@bio-techne.com
Orders: nb-customerservice@bio-techne.com
General: novus@novusbio.com

Limitations

This product is for research use only and is not approved for use in humans or in clinical diagnosis. Primary Antibodies are guaranteed for 1 year from date of receipt.

For more information on our 100% guarantee, please visit www.novusbio.com/guarantee

Earn gift cards/discounts by submitting a review: www.novusbio.com/reviews/submit/NBP2-76946

Earn gift cards/discounts by submitting a publication using this product:
www.novusbio.com/publications

