

Product Datasheet

KIF3A Antibody NBP2-76942

Unit Size: 100 ul

Store at 4C short term. Aliquot and store at -20C long term. Avoid freeze-thaw cycles.

www.novusbio.com



technical@novusbio.com

Protocols, Publications, Related Products, Reviews, Research Tools and Images at:
www.novusbio.com/NBP2-76942

Updated 1/3/2023 v.20.1

Earn rewards for product
reviews and publications.

Submit a publication at www.novusbio.com/publications

Submit a review at www.novusbio.com/reviews/destination/NBP2-76942



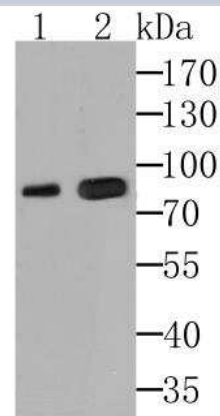
NBP2-76942**KIF3A Antibody**

Product Information	
Unit Size	100 ul
Concentration	1 mg/ml
Storage	Store at 4C short term. Aliquot and store at -20C long term. Avoid freeze-thaw cycles.
Clonality	Polyclonal
Preservative	0.05% Sodium Azide
Isotype	IgG
Purity	Immunogen affinity purified
Buffer	PBS (pH7.4), 0.2% BSA, 50% Glycerol
Target Molecular Weight	80 kDa
Product Description	
Host	Rabbit
Gene Symbol	KIF3A
Species	Human, Mouse, Rat
Immunogen	Recombinant protein within Human KIF3A aa 154-364 / 699. (SwissProt: Q9Y496 Human; SwissProt: P28741 Mouse; Unigene: 47400 Rat)
Product Application Details	
Applications	Western Blot, Flow Cytometry, Immunohistochemistry, Immunohistochemistry-Paraffin
Recommended Dilutions	Western Blot 1:500-1:1000, Flow Cytometry 1:50-1:100, Immunohistochemistry, Immunohistochemistry-Paraffin 1:50-1:100

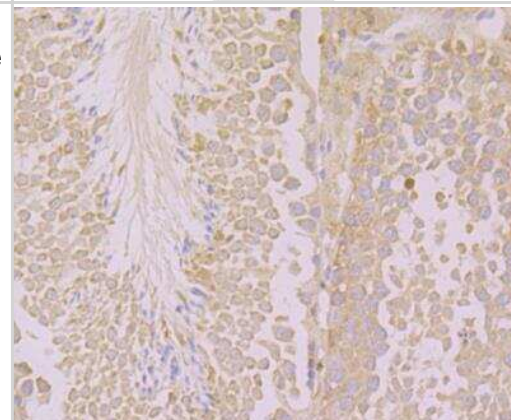


Images

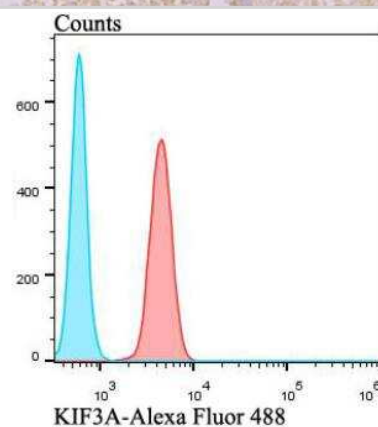
Western Blot: KIF3A Antibody [NBP2-76942] - Western blot analysis of KIF3A on rat testis tissue (1) and Daudi cell (2) lysates using anti-KIF3A antibody at 1/500 dilution.



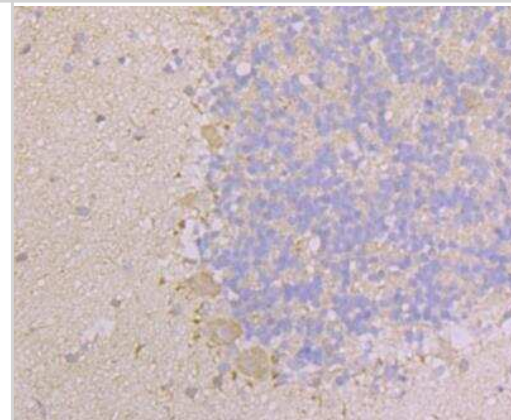
Immunohistochemistry: KIF3A Antibody [NBP2-76942] - Immunohistochemical analysis of paraffin-embedded mouse testis tissue using anti-KIF3A antibody. Counter stained with hematoxylin.



Flow Cytometry: KIF3A Antibody [NBP2-76942] - Flow cytometric analysis of A549 cells with KIF3A antibody at 1/100 dilution (red) compared with an unlabelled control (cells without incubation with primary antibody; blue). Alexa Fluor 488-conjugated goat anti-rabbit IgG was used as the secondary antibody.



Immunohistochemistry: KIF3A Antibody [NBP2-76942] - Immunohistochemical analysis of paraffin-embedded rat cerebellum tissue using anti-KIF3A antibody. Counter stained with hematoxylin.





Novus Biologicals USA

10730 E. Briarwood Avenue
Centennial, CO 80112
USA
Phone: 303.730.1950
Toll Free: 1.888.506.6887
Fax: 303.730.1966
nb-customerservice@bio-techne.com

Bio-Techne Canada

21 Canmotor Ave
Toronto, ON M8Z 4E6
Canada
Phone: 905.827.6400
Toll Free: 855.668.8722
Fax: 905.827.6402
canada.inquires@bio-techne.com

Bio-Techne Ltd

19 Barton Lane
Abingdon Science Park
Abingdon, OX14 3NB, United Kingdom
Phone: (44) (0) 1235 529449
Free Phone: 0800 37 34 15
Fax: (44) (0) 1235 533420
info.EMEA@bio-techne.com

General Contact Information

www.novusbio.com
Technical Support: nb-technical@bio-
techne.com
Orders: nb-customerservice@bio-techne.com
General: novus@novusbio.com

Limitations

This product is for research use only and is not approved for use in humans or in clinical diagnosis. Primary Antibodies are guaranteed for 1 year from date of receipt.

For more information on our 100% guarantee, please visit www.novusbio.com/guarantee

Earn gift cards/discounts by submitting a review: www.novusbio.com/reviews/submit/NBP2-76942

Earn gift cards/discounts by submitting a publication using this product:
www.novusbio.com/publications

