

# Product Datasheet

## MSH2 Antibody (10G3)

### NBP2-76898

Unit Size: 100 ul

Store at 4C short term. Aliquot and store at -20C long term. Avoid freeze-thaw cycles.

[www.novusbio.com](http://www.novusbio.com)



[technical@novusbio.com](mailto:technical@novusbio.com)

Protocols, Publications, Related Products, Reviews, Research Tools and Images at:  
[www.novusbio.com/NBP2-76898](http://www.novusbio.com/NBP2-76898)

Updated 1/3/2023 v.20.1

Earn rewards for product  
reviews and publications.

Submit a publication at [www.novusbio.com/publications](http://www.novusbio.com/publications)

Submit a review at [www.novusbio.com/reviews/destination/NBP2-76898](http://www.novusbio.com/reviews/destination/NBP2-76898)



**NBP2-76898****MSH2 Antibody (10G3)**

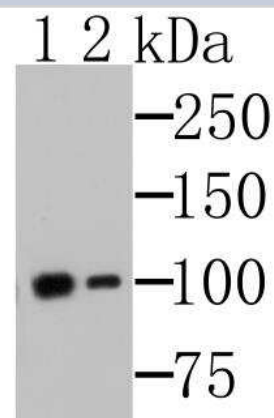
<b>Product Information</b>	
<b>Unit Size</b>	100 ul
<b>Concentration</b>	2 mg/ml
<b>Storage</b>	Store at 4C short term. Aliquot and store at -20C long term. Avoid freeze-thaw cycles.
<b>Clonality</b>	Monoclonal
<b>Clone</b>	10G3
<b>Preservative</b>	0.05% Sodium Azide
<b>Isotype</b>	IgG2b
<b>Purity</b>	Protein G purified
<b>Buffer</b>	PBS (pH7.4), 0.2% BSA, 50% Glycerol
<b>Target Molecular Weight</b>	104 kDa

<b>Product Description</b>	
<b>Host</b>	Mouse
<b>Gene Symbol</b>	MSH2
<b>Species</b>	Human, Mouse, Rat
<b>Reactivity Notes</b>	Mouse blocking reagent may be needed for IHC and ICC experiments to reduce high background signal. You can find these reagents under catalog numbers PK-2200-NB and MP-2400-NB. Please contact Technical Support if you have any. Please note that this antibody is reactive to Mouse and derived from the same host, Mouse. Mouse-On-questions.
<b>Immunogen</b>	Synthetic peptide within N-terminal residues of Human MSH2. (SwissProt: P43246 Human; SwissProt: P43247 Mouse; SwissProt: P54275 Rat)

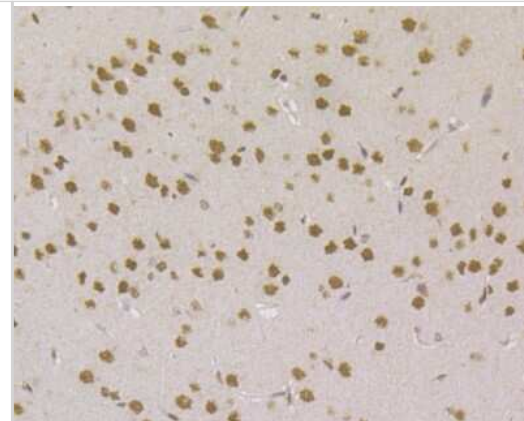
<b>Product Application Details</b>	
<b>Applications</b>	Western Blot, Immunohistochemistry, Immunohistochemistry-Paraffin
<b>Recommended Dilutions</b>	Western Blot 1:2000-1:5000, Immunohistochemistry, Immunohistochemistry-Paraffin 1:100-1:500

**Images**

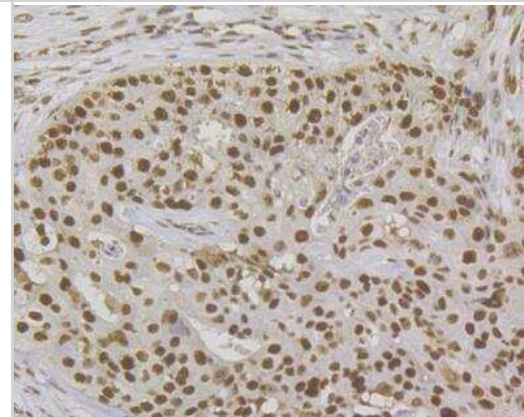
Western Blot: MSH2 Antibody (10G3) [NBP2-76898] - Western blot analysis of MSH2 on K562 cells lysates using anti-MSH2 antibody. Lane 1: Anti-MSH2 antibody, 1:500. Lane 2: Anti-MSH2 antibody, 1:5,000.



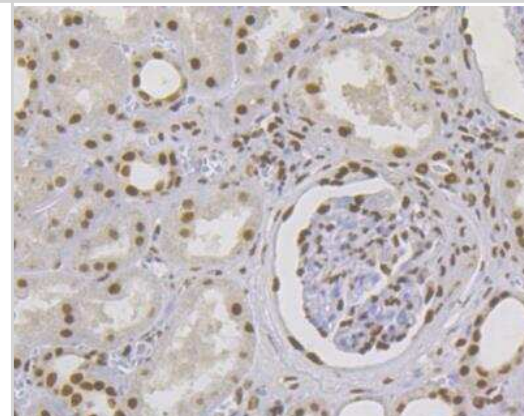
Immunohistochemistry-Paraffin: MSH2 Antibody (10G3) [NBP2-76898] - Immunohistochemical analysis of paraffin-embedded rat brain tissue using anti-MSH2 antibody. Counter stained with hematoxylin. The section was pre-treated using heat mediated antigen retrieval with sodium citrate buffer (pH6) for 20 mins.



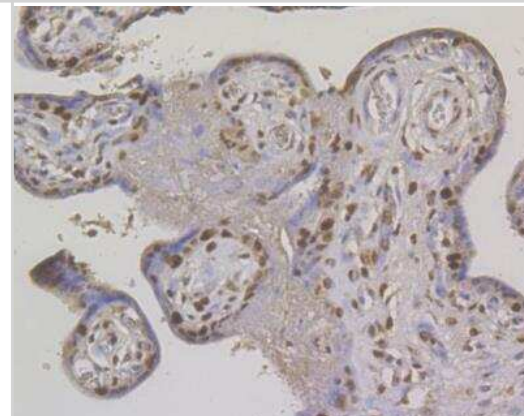
Immunohistochemistry: MSH2 Antibody (10G3) [NBP2-76898] - Immunohistochemical analysis of paraffin-embedded human breast cancer tissue using anti-MSH2 antibody. Counter stained with hematoxylin. The section was pre-treated using heat mediated antigen retrieval with sodium citrate buffer (pH6) for 20 mins.



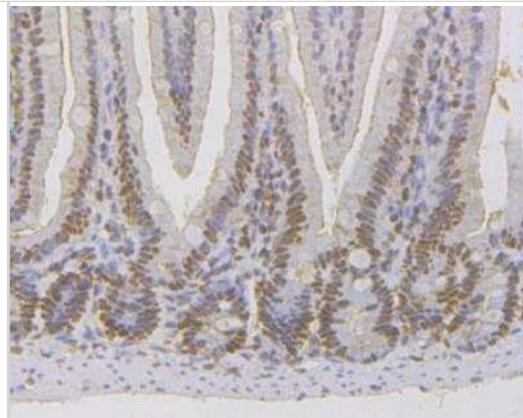
Immunohistochemistry: MSH2 Antibody (10G3) [NBP2-76898] - Immunohistochemical analysis of paraffin-embedded human kidney tissue using anti-MSH2 antibody. Counter stained with hematoxylin. The section was pre-treated using heat mediated antigen retrieval with sodium citrate buffer (pH6) for 20 mins.



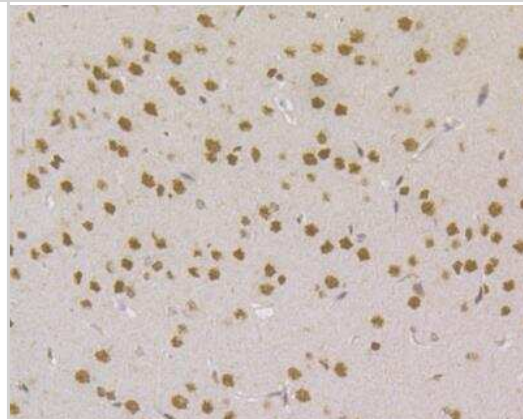
Immunohistochemistry: MSH2 Antibody (10G3) [NBP2-76898] - Immunohistochemical analysis of paraffin-embedded human placenta tissue using anti-MSH2 antibody. Counter stained with hematoxylin. The section was pre-treated using heat mediated antigen retrieval with sodium citrate buffer (pH6) for 20 mins.



Immunohistochemistry: MSH2 Antibody (10G3) [NBP2-76898] - Immunohistochemical analysis of paraffin-embedded mouse colon tissue using anti-MSH2 antibody. Counter stained with hematoxylin. The section was pre-treated using heat mediated antigen retrieval with sodium citrate buffer (pH6) for 20 mins.



Immunohistochemistry: MSH2 Antibody (10G3) [NBP2-76898] - Immunohistochemical analysis of paraffin-embedded rat brain tissue using anti-MSH2 antibody. Counter stained with hematoxylin. The section was pre-treated using heat mediated antigen retrieval with sodium citrate buffer (pH6) for 20 mins.





### **Novus Biologicals USA**

10730 E. Briarwood Avenue  
Centennial, CO 80112  
USA  
Phone: 303.730.1950  
Toll Free: 1.888.506.6887  
Fax: 303.730.1966  
nb-customerservice@bio-techne.com

### **Bio-Techne Canada**

21 Canmotor Ave  
Toronto, ON M8Z 4E6  
Canada  
Phone: 905.827.6400  
Toll Free: 855.668.8722  
Fax: 905.827.6402  
canada.inquires@bio-techne.com

### **Bio-Techne Ltd**

19 Barton Lane  
Abingdon Science Park  
Abingdon, OX14 3NB, United Kingdom  
Phone: (44) (0) 1235 529449  
Free Phone: 0800 37 34 15  
Fax: (44) (0) 1235 533420  
info.EMEA@bio-techne.com

### **General Contact Information**

www.novusbio.com  
Technical Support: nb-technical@bio-  
techne.com  
Orders: nb-customerservice@bio-techne.com  
General: novus@novusbio.com

### **Limitations**

This product is for research use only and is not approved for use in humans or in clinical diagnosis. Primary Antibodies are guaranteed for 1 year from date of receipt.

For more information on our 100% guarantee, please visit [www.novusbio.com/guarantee](http://www.novusbio.com/guarantee)

Earn gift cards/discounts by submitting a review: [www.novusbio.com/reviews/submit/NBP2-76898](http://www.novusbio.com/reviews/submit/NBP2-76898)

Earn gift cards/discounts by submitting a publication using this product:  
[www.novusbio.com/publications](http://www.novusbio.com/publications)

