

Product Datasheet

MSH2 Antibody (10G2)

NBP2-76896

Unit Size: 100 ul

Store at 4C short term. Aliquot and store at -20C long term. Avoid freeze-thaw cycles.

www.novusbio.com



technical@novusbio.com

Protocols, Publications, Related Products, Reviews, Research Tools and Images at:
www.novusbio.com/NBP2-76896

Updated 1/3/2023 v.20.1

Earn rewards for product reviews and publications.

Submit a publication at www.novusbio.com/publications

Submit a review at www.novusbio.com/reviews/destination/NBP2-76896



NBP2-76896**MSH2 Antibody (10G2)**

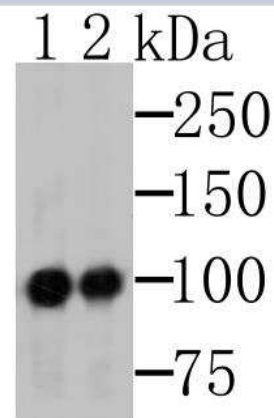
Product Information	
Unit Size	100 ul
Concentration	2 mg/ml
Storage	Store at 4C short term. Aliquot and store at -20C long term. Avoid freeze-thaw cycles.
Clonality	Monoclonal
Clone	10G2
Preservative	0.05% Sodium Azide
Isotype	IgG2b
Purity	Protein G purified
Buffer	PBS (pH7.4), 0.2% BSA, 50% Glycerol
Target Molecular Weight	104 kDa

Product Description	
Host	Mouse
Gene Symbol	MSH2
Species	Human, Mouse, Rat
Reactivity Notes	Mouse blocking reagent may be needed for IHC and ICC experiments to reduce high background signal. You can find these reagents under catalog numbers PK-2200-NB and MP-2400-NB. Please contact Technical Support if you have any. Please note that this antibody is reactive to Mouse and derived from the same host, Mouse. Mouse-On-questions.
Immunogen	Synthetic peptide within N-terminal human MSH2. (SwissProt: P43246 Human; SwissProt: P43247 Mouse; SwissProt: P54275 Rat)

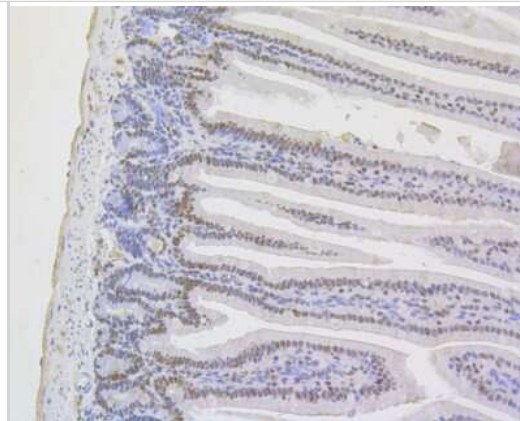
Product Application Details	
Applications	Western Blot, Immunohistochemistry, Immunohistochemistry-Paraffin
Recommended Dilutions	Western Blot 1:2000-1:5000, Immunohistochemistry, Immunohistochemistry-Paraffin 1:100-1:500

Images

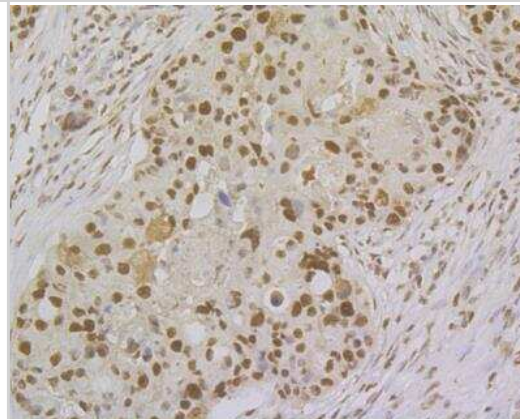
Western Blot: MSH2 Antibody (10G2) [NBP2-76896] - Western blot analysis of MSH2 on K562 cells lysates using anti-MSH2 antibody. Lane 1: Anti-MSH2 antibody, 1:500. Lane 2: Anti-MSH2 antibody, 1:5,000.



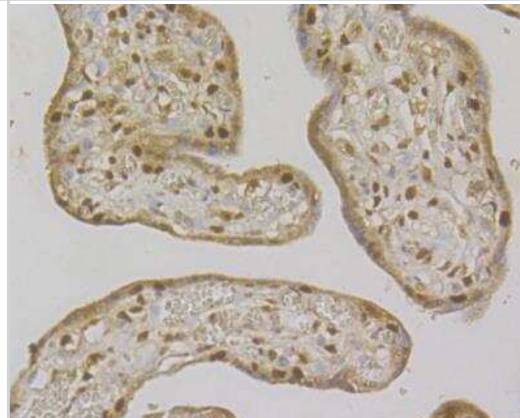
Immunohistochemistry-Paraffin: MSH2 Antibody (10G2) [NBP2-76896] - Immunohistochemical analysis of paraffin-embedded mouse colon tissue using anti-MSH2 antibody. The section was pre-treated using heat mediated antigen retrieval with sodium citrate buffer (pH 6.0) for 20 minutes. The tissues were blocked in 5% BSA for 30



Immunohistochemistry: MSH2 Antibody (10G2) [NBP2-76896] - Immunohistochemical analysis of paraffin-embedded human breast cancer tissue using anti-MSH2 antibody. Counter stained with hematoxylin. The section was pre-treated using heat mediated antigen retrieval with sodium citrate buffer (pH6) for 20 mins.



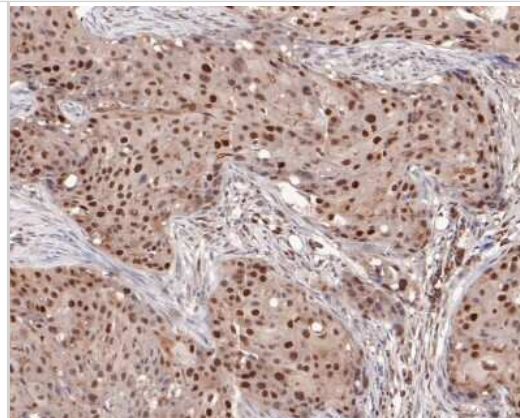
Immunohistochemistry: MSH2 Antibody (10G2) [NBP2-76896] - Immunohistochemical analysis of paraffin-embedded human kidney tissue using anti-MSH2 antibody. Counter stained with hematoxylin. The section was pre-treated using heat mediated antigen retrieval with sodium citrate buffer (pH6) for 20 mins.



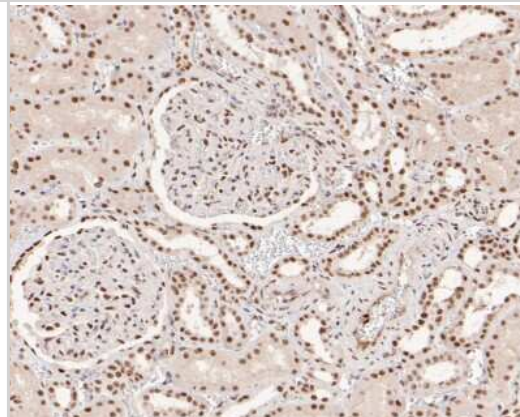
Immunohistochemistry: MSH2 Antibody (10G2) [NBP2-76896] - Immunohistochemical analysis of paraffin-embedded rat brain tissue using anti-MSH2 antibody. Counter stained with hematoxylin. The section was pre-treated using heat mediated antigen retrieval with sodium citrate buffer (pH6) for 20 mins.



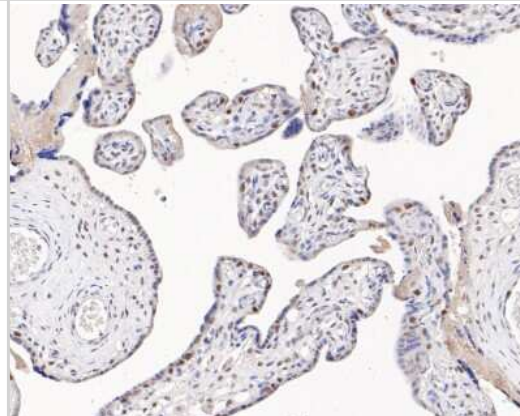
Immunohistochemistry-Paraffin: MSH2 Antibody (10G2) [NBP2-76896] - Immunohistochemical analysis of paraffin-embedded human breast carcinoma tissue using anti-MSH2 antibody. The section was pre-treated using heat mediated antigen retrieval with sodium citrate buffer (pH 6.0) for 20 minutes. The tissues were blocked in 5%



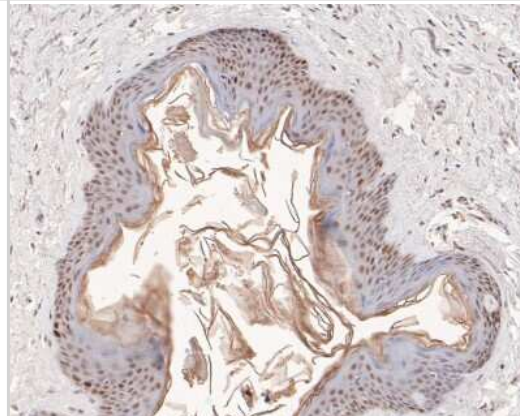
Immunohistochemistry-Paraffin: MSH2 Antibody (10G2) [NBP2-76896] - Immunohistochemical analysis of paraffin-embedded human kidney tissue using anti-MSH2 antibody. The section was pre-treated using heat mediated antigen retrieval with sodium citrate buffer (pH 6.0) for 20 minutes. The tissues were blocked in 5% BSA for 30



Immunohistochemistry-Paraffin: MSH2 Antibody (10G2) [NBP2-76896] - Immunohistochemical analysis of paraffin-embedded human placenta tissue using anti-MSH2 antibody. The section was pre-treated using heat mediated antigen retrieval with sodium citrate buffer (pH 6.0) for 20 minutes. The tissues were blocked in 5% BSA for



Immunohistochemistry-Paraffin: MSH2 Antibody (10G2) [NBP2-76896] - Immunohistochemical analysis of paraffin-embedded human skin tissue using anti-MSH2 antibody. The section was pre-treated using heat mediated antigen retrieval with sodium citrate buffer (pH 6.0) for 20 minutes. The tissues were blocked in 5% BSA for 30 m





Novus Biologicals USA

10730 E. Briarwood Avenue
Centennial, CO 80112
USA
Phone: 303.730.1950
Toll Free: 1.888.506.6887
Fax: 303.730.1966
nb-customerservice@bio-techne.com

Bio-Techne Canada

21 Canmotor Ave
Toronto, ON M8Z 4E6
Canada
Phone: 905.827.6400
Toll Free: 855.668.8722
Fax: 905.827.6402
canada.inquires@bio-techne.com

Bio-Techne Ltd

19 Barton Lane
Abingdon Science Park
Abingdon, OX14 3NB, United Kingdom
Phone: (44) (0) 1235 529449
Free Phone: 0800 37 34 15
Fax: (44) (0) 1235 533420
info.EMEA@bio-techne.com

General Contact Information

www.novusbio.com
Technical Support: nb-technical@bio-techne.com
Orders: nb-customerservice@bio-techne.com
General: novus@novusbio.com

Limitations

This product is for research use only and is not approved for use in humans or in clinical diagnosis. Primary Antibodies are guaranteed for 1 year from date of receipt.

For more information on our 100% guarantee, please visit www.novusbio.com/guarantee

Earn gift cards/discounts by submitting a review: www.novusbio.com/reviews/submit/NBP2-76896

Earn gift cards/discounts by submitting a publication using this product:
www.novusbio.com/publications

