

Product Datasheet

SUMO Activating Enzyme E1 (SAE1) Antibody (JG35-88) NBP2-76866

Unit Size: 100 ul

Store at 4C short term. Aliquot and store at -20C long term. Avoid freeze-thaw cycles.

www.novusbio.com



technical@novusbio.com

Protocols, Publications, Related Products, Reviews, Research Tools and Images at:
www.novusbio.com/NBP2-76866

Updated 1/3/2023 v.20.1

Earn rewards for product
reviews and publications.

Submit a publication at www.novusbio.com/publications

Submit a review at www.novusbio.com/reviews/destination/NBP2-76866



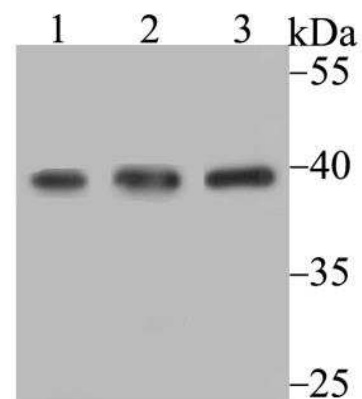
NBP2-76866**SUMO Activating Enzyme E1 (SAE1) Antibody (JG35-88)**

Product Information	
Unit Size	100 ul
Concentration	1 mg/ml
Storage	Store at 4C short term. Aliquot and store at -20C long term. Avoid freeze-thaw cycles.
Clonality	Monoclonal
Clone	JG35-88
Preservative	0.05% Sodium Azide
Isotype	IgG
Purity	Protein A purified
Buffer	TBS (pH7.4), 0.05% BSA, 40% Glycerol
Target Molecular Weight	38 kDa
Product Description	
Host	Rabbit
Gene Symbol	SAE1
Species	Human
Immunogen	Synthetic peptide within Human SUMO Activating Enzyme E1 (SAE1) aa 201-249 / 346. (SwissProt: Q9UBE0 Human)
Product Application Details	
Applications	Western Blot, Flow Cytometry
Recommended Dilutions	Western Blot 1:500-1:2000, Flow Cytometry 1:50-1:100

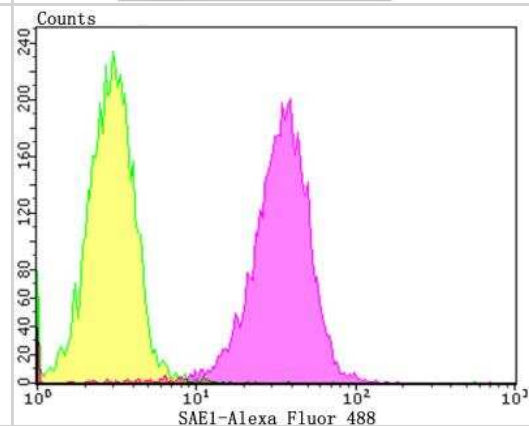


Images

Western Blot: SUMO Activating Enzyme E1 (SAE1) Antibody (JG35-88) [NBP2-76866] - Western blot analysis of SAE1 on different cell lysates using anti-SAE1 antibody at 1/1,000 dilution. Positive control: Lane 1: SiHa Lane 2: K562 Lane 3: 293



Flow Cytometry: SUMO Activating Enzyme E1 (SAE1) Antibody (JG35-88) [NBP2-76866] - Flow cytometric analysis of A549 cells with SAE1 antibody at 1/100 dilution (yellow) compared with an unlabelled control (cells without incubation with primary antibody; purple). Alexa Fluor 488-conjugated goat anti-rabbit IgG was used as the secondary antibody.





Novus Biologicals USA

10730 E. Briarwood Avenue
Centennial, CO 80112
USA
Phone: 303.730.1950
Toll Free: 1.888.506.6887
Fax: 303.730.1966
nb-customerservice@bio-techne.com

Bio-Techne Canada

21 Canmotor Ave
Toronto, ON M8Z 4E6
Canada
Phone: 905.827.6400
Toll Free: 855.668.8722
Fax: 905.827.6402
canada.inquires@bio-techne.com

Bio-Techne Ltd

19 Barton Lane
Abingdon Science Park
Abingdon, OX14 3NB, United Kingdom
Phone: (44) (0) 1235 529449
Free Phone: 0800 37 34 15
Fax: (44) (0) 1235 533420
info.EMEA@bio-techne.com

General Contact Information

www.novusbio.com
Technical Support: nb-technical@bio-techne.com
Orders: nb-customerservice@bio-techne.com
General: novus@novusbio.com

Limitations

This product is for research use only and is not approved for use in humans or in clinical diagnosis. Primary Antibodies are guaranteed for 1 year from date of receipt.

For more information on our 100% guarantee, please visit www.novusbio.com/guarantee

Earn gift cards/discounts by submitting a review: www.novusbio.com/reviews/submit/NBP2-76866

Earn gift cards/discounts by submitting a publication using this product:
www.novusbio.com/publications

