

Product Datasheet

CHAF1A Antibody (JG38-98)

NBP2-76859

Unit Size: 100 ul

Store at 4C short term. Aliquot and store at -20C long term. Avoid freeze-thaw cycles.

www.novusbio.com



technical@novusbio.com

Protocols, Publications, Related Products, Reviews, Research Tools and Images at:
www.novusbio.com/NBP2-76859

Updated 5/28/2024 v.20.1

Earn rewards for product
reviews and publications.

Submit a publication at www.novusbio.com/publications

Submit a review at www.novusbio.com/reviews/destination/NBP2-76859



NBP2-76859

CHAF1A Antibody (JG38-98)

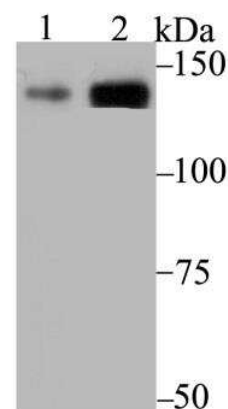
Product Information	
Unit Size	100 ul
Concentration	1 mg/ml
Storage	Store at 4C short term. Aliquot and store at -20C long term. Avoid freeze-thaw cycles.
Clonality	Monoclonal
Clone	JG38-98
Preservative	0.05% Sodium Azide
Isotype	IgG
Purity	Protein A purified
Buffer	TBS (pH7.4), 0.05% BSA, 40% Glycerol
Target Molecular Weight	107 kDa

Product Description	
Host	Rabbit
Gene ID	10036
Gene Symbol	CHAF1A
Species	Human
Immunogen	Recombinant protein within Human CHAF1A aa 81-195 / 956. (SwissProt: Q13111 Human)

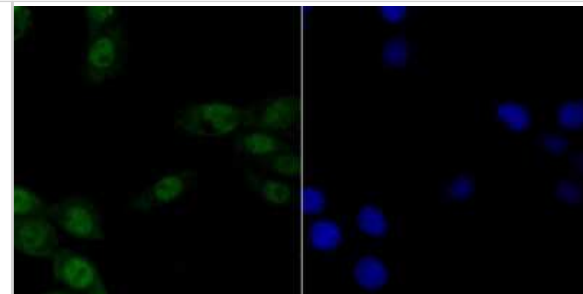
Product Application Details	
Applications	Western Blot, Flow Cytometry, Immunocytochemistry/ Immunofluorescence, Immunohistochemistry, Immunohistochemistry-Paraffin, Immunoprecipitation
Recommended Dilutions	Western Blot 1:500-1:2000, Flow Cytometry 1:50-1:100, Immunohistochemistry, Immunocytochemistry/ Immunofluorescence 1:50-1:200, Immunoprecipitation 1:10-1:50, Immunohistochemistry-Paraffin 1:50-1:200

Images

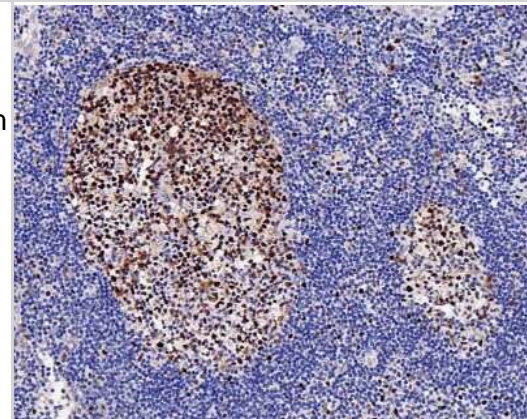
Western Blot: CHAF1A Antibody (JG38-98) [NBP2-76859] - Western blot analysis of p150 CAF1 on K562 (1) and A431 (2) cell lysate using anti-p150 CAF1 antibody at 1/1,000 dilution.



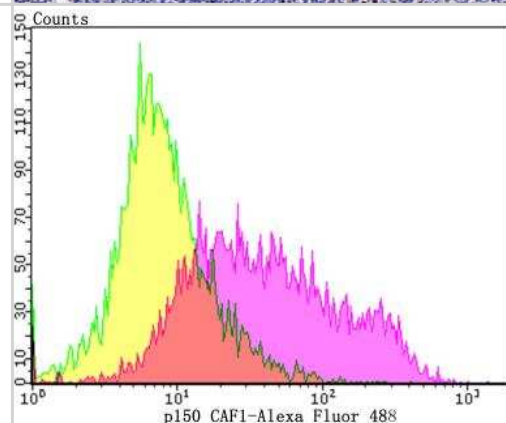
Immunocytochemistry/Immunofluorescence: CHAF1A Antibody (JG38-98) [NBP2-76859] - ICC staining p150 CAF1 in LOVO cells (green). The nuclear counter stain is DAPI (blue). Cells were fixed in paraformaldehyde, permeabilised with 0.25% Triton X100/PBS.



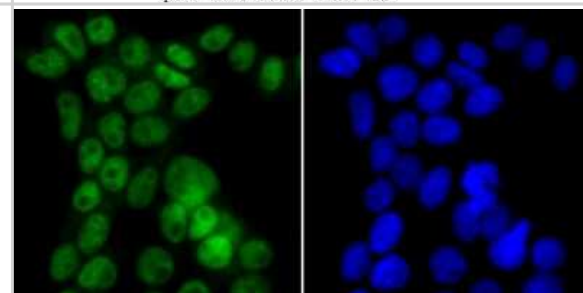
Immunohistochemistry-Paraffin: CHAF1A Antibody (JG38-98) [NBP2-76859] - Analysis of paraffin-embedded human lymph nodes tissue with Rabbit anti-p150 CHAF1A antibody washed with ddH₂O and PBS, and then probed with the primary antibody at 1/200 dilution for 1 hour at room temperature. The detection was performed using an HRP conjugated compact polymer system. DAB was used as the chromogen. Tissues were counterstained with hematoxylin and mounted with DPX.



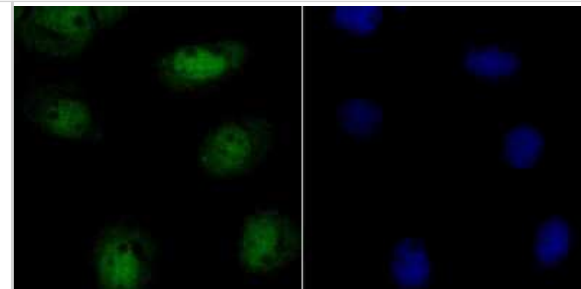
Flow Cytometry: CHAF1A Antibody (JG38-98) [NBP2-76859] - Flow cytometric analysis of Daudi cells with p150 CAF1 antibody at 1/100 dilution (purple) compared with an unlabelled control (cells without incubation with primary antibody; yellow). Alexa Fluor 488-conjugated goat anti-rabbit IgG was used as the secondary antibody.



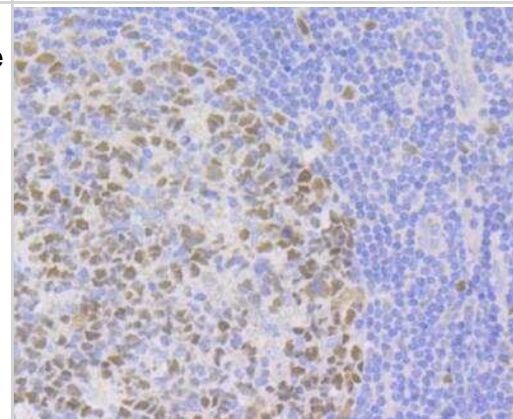
Immunocytochemistry/Immunofluorescence: CHAF1A Antibody (JG38-98) [NBP2-76859] - ICC staining p150 CAF1 in 293T cells (green). The nuclear counter stain is DAPI (blue). Cells were fixed in paraformaldehyde, permeabilised with 0.25% Triton X100/PBS.



Immunocytochemistry/Immunofluorescence: CHAF1A Antibody (JG38-98) [NBP2-76859] - ICC staining p150 CAF1 in A431 cells (green). The nuclear counter stain is DAPI (blue). Cells were fixed in paraformaldehyde, permeabilised with 0.25% Triton X100/PBS.



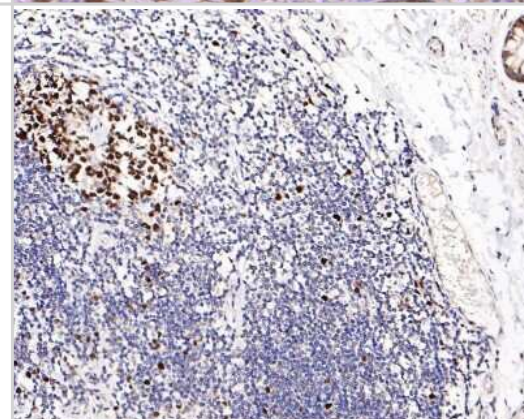
Immunohistochemistry: CHAF1A Antibody (JG38-98) [NBP2-76859] - Immunohistochemical analysis of paraffin-embedded human tonsil tissue using anti-p150 CAF1 antibody. Counter stained with hematoxylin.



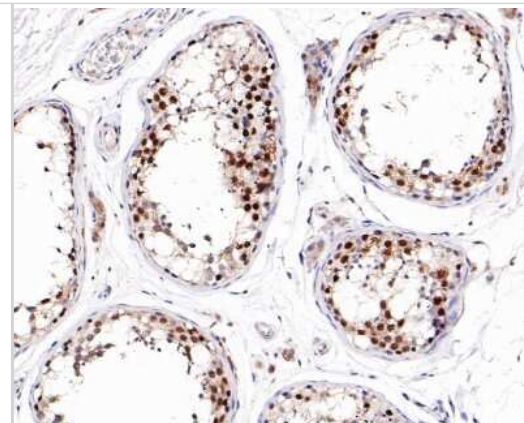
Immunohistochemistry: CHAF1A Antibody (JG38-98) [NBP2-76859] - Immunohistochemical analysis of paraffin-embedded human colon tissue using anti-p150 CAF1 antibody. Counter stained with hematoxylin.



Immunohistochemistry-Paraffin: CHAF1A Antibody (JG38-98) [NBP2-76859] - Analysis of paraffin-embedded human colon tissue with Rabbit anti-CHAF1A antibody washed with ddH₂O and PBS, and then probed with the primary antibody at 1/200 dilution for 1 hour at room temperature. The detection was performed using an HRP conjugated compact polymer system. DAB was used as the chromogen. Tissues were counterstained with hematoxylin and mounted with DPX.



Immunohistochemistry-Paraffin: CHAF1A Antibody (JG38-98) [NBP2-76859] - Analysis of paraffin-embedded human testis tissue with Rabbit anti-CHAF1A antibody washed with ddH₂O and PBS, and then probed with the primary antibody at 1/200 dilution for 1 hour at room temperature. The detection was performed using an HRP conjugated compact polymer system. DAB was used as the chromogen. Tissues were counterstained with hematoxylin and mounted with DPX.





Novus Biologicals USA

10730 E. Briarwood Avenue
Centennial, CO 80112
USA
Phone: 303.730.1950
Toll Free: 1.888.506.6887
Fax: 303.730.1966
nb-customerservice@bio-techne.com

Bio-Techne Canada

21 Canmotor Ave
Toronto, ON M8Z 4E6
Canada
Phone: 905.827.6400
Toll Free: 855.668.8722
Fax: 905.827.6402
canada.inquires@bio-techne.com

Bio-Techne Ltd

19 Barton Lane
Abingdon Science Park
Abingdon, OX14 3NB, United Kingdom
Phone: (44) (0) 1235 529449
Free Phone: 0800 37 34 15
Fax: (44) (0) 1235 533420
info.EMEA@bio-techne.com

General Contact Information

www.novusbio.com
Technical Support: nb-technical@bio-techne.com
Orders: nb-customerservice@bio-techne.com
General: novus@novusbio.com

Limitations

This product is for research use only and is not approved for use in humans or in clinical diagnosis. Primary Antibodies are guaranteed for 1 year from date of receipt.

For more information on our 100% guarantee, please visit www.novusbio.com/guarantee

Earn gift cards/discounts by submitting a review: www.novusbio.com/reviews/submit/NBP2-76859

Earn gift cards/discounts by submitting a publication using this product:
www.novusbio.com/publications

