

Product Datasheet

EMI1 Antibody (JG35-83) NBP2-76833

Unit Size: 100 ul

Store at 4C short term. Aliquot and store at -20C long term. Avoid freeze-thaw cycles.

www.novusbio.com



technical@novusbio.com

Publications: 1

Protocols, Publications, Related Products, Reviews, Research Tools and Images at:
www.novusbio.com/NBP2-76833

Updated 5/28/2024 v.20.1

Earn rewards for product
reviews and publications.

Submit a publication at www.novusbio.com/publications

Submit a review at www.novusbio.com/reviews/destination/NBP2-76833



NBP2-76833

EMI1 Antibody (JG35-83)

Product Information

Unit Size	100 ul
Concentration	1 mg/ml
Storage	Store at 4C short term. Aliquot and store at -20C long term. Avoid freeze-thaw cycles.
Clonality	Monoclonal
Clone	JG35-83
Preservative	0.05% Sodium Azide
Isotype	IgG
Purity	Protein A purified
Buffer	TBS (pH7.4), 0.05% BSA, 40% Glycerol
Target Molecular Weight	50 kDa

Product Description

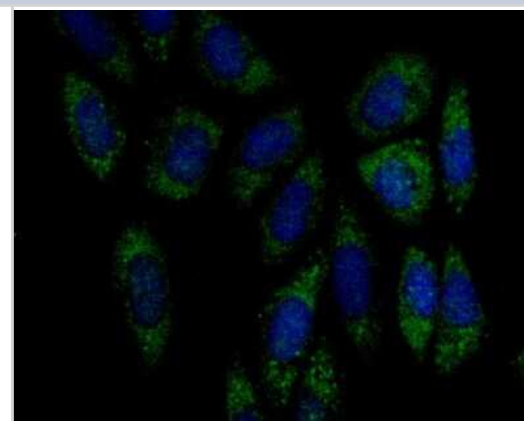
Host	Rabbit
Gene ID	26271
Gene Symbol	FBXO5
Species	Human, Mouse, Rat
Immunogen	Recombinant protein within Human EMI1 aa 128-244 / 447. (SwissProt: Q9UKT4 Human; SwissProt: Q7TSG3 Mouse; SwissProt: B0BNA4 Rat)

Product Application Details

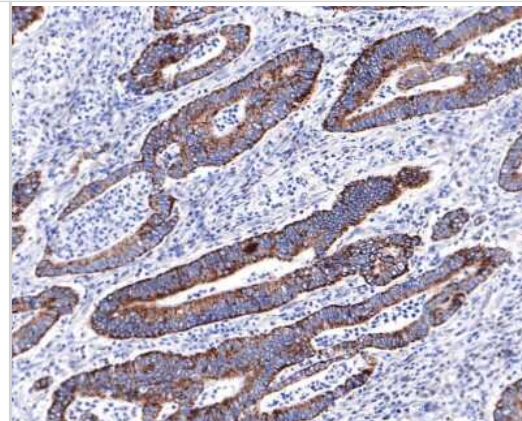
Applications	Western Blot, Immunocytochemistry/ Immunofluorescence, Immunohistochemistry, Immunohistochemistry-Paraffin
Recommended Dilutions	Western Blot 1:500, Immunohistochemistry, Immunocytochemistry/ Immunofluorescence 1:50-1:200, Immunohistochemistry-Paraffin 1:50-1:200

Images

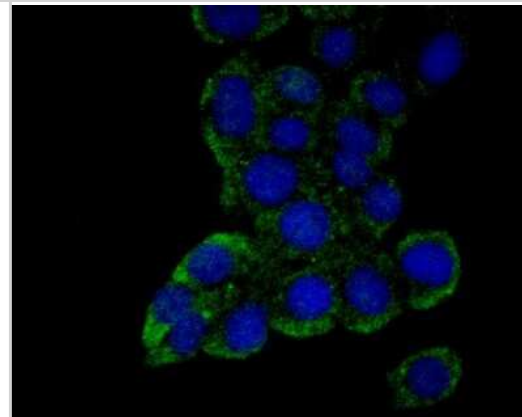
Immunocytochemistry/Immunofluorescence: EMI1 Antibody (JG35-83) [NBP2-76833] - ICC staining Emi1 in Siha cells (green). The nuclear counter stain is DAPI (blue). Cells were fixed in paraformaldehyde, permeabilised with 0.25% Triton X100/PBS.



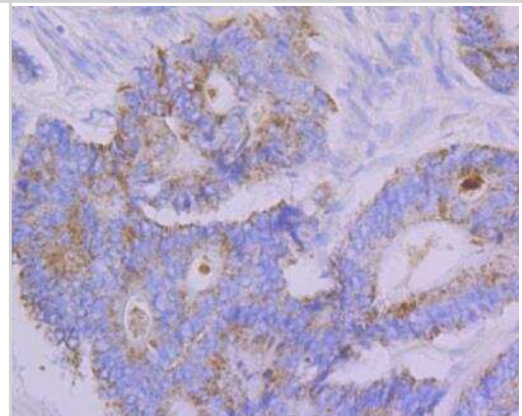
Immunohistochemistry-Paraffin: EMI1 Antibody (JG35-83) [NBP2-76833]
 - Analysis of paraffin-embedded human colon carcinoma with Rabbit anti-EMI1 antibody washed with ddH₂O and PBS, and then probed with the primary antibody at 1/400 dilution for 1 hour at room temperature. The detection was performed using an HRP conjugated compact polymer system. DAB was used as the chromogen. Tissues were counterstained with hematoxylin and mounted with DPX.



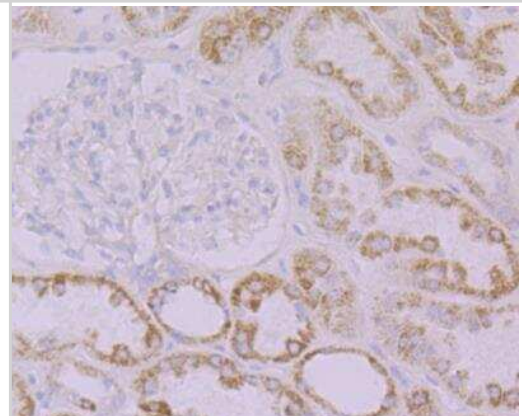
Immunocytochemistry/Immunofluorescence: EMI1 Antibody (JG35-83) [NBP2-76833] - ICC staining Emi1 in LOVO cells (green). The nuclear counter stain is DAPI (blue). Cells were fixed in paraformaldehyde, permeabilised with 0.25% Triton X100/PBS.



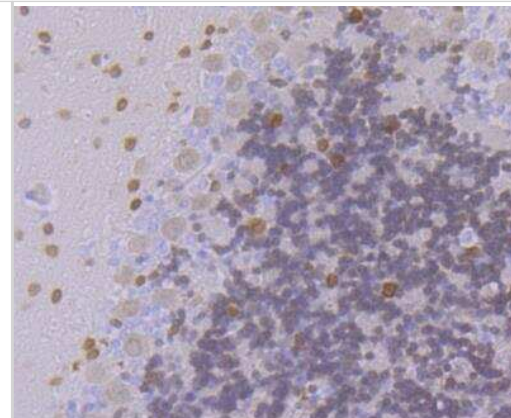
Immunohistochemistry: EMI1 Antibody (JG35-83) [NBP2-76833] - Immunohistochemical analysis of paraffin-embedded human colon cancer tissue using anti-Emi1 antibody. Counter stained with hematoxylin.



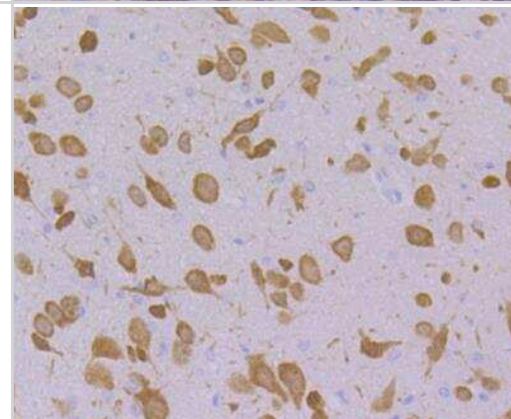
Immunohistochemistry: EMI1 Antibody (JG35-83) [NBP2-76833] - Immunohistochemical analysis of paraffin-embedded human kidney tissue using anti-Emi1 antibody. Counter stained with hematoxylin.



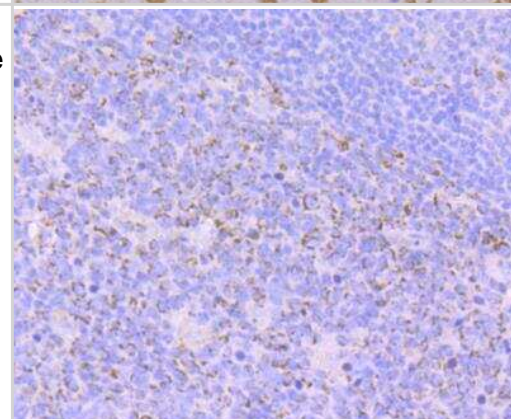
Immunohistochemistry: EMI1 Antibody (JG35-83) [NBP2-76833] - Immunohistochemical analysis of paraffin-embedded rat cerebellum tissue using anti-Emi1 antibody. Counter stained with hematoxylin.



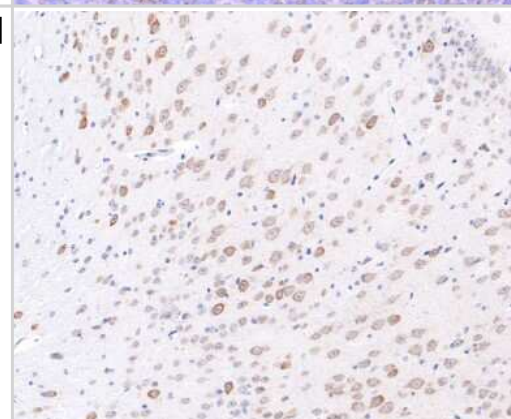
Immunohistochemistry: EMI1 Antibody (JG35-83) [NBP2-76833] - Immunohistochemical analysis of paraffin-embedded mouse cerebellum tissue using anti-Emi1 antibody. Counter stained with hematoxylin.



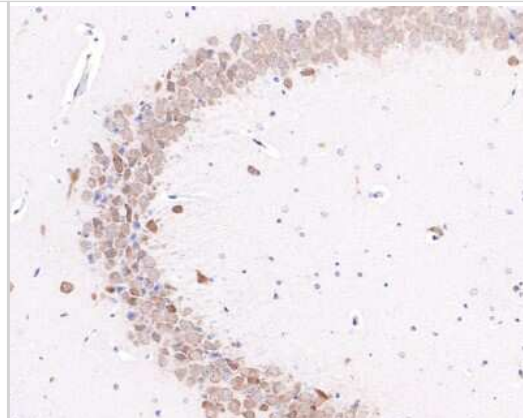
Immunohistochemistry: EMI1 Antibody (JG35-83) [NBP2-76833] - Immunohistochemical analysis of paraffin-embedded human tonsil tissue using anti-Emi1 antibody. Counter stained with hematoxylin.



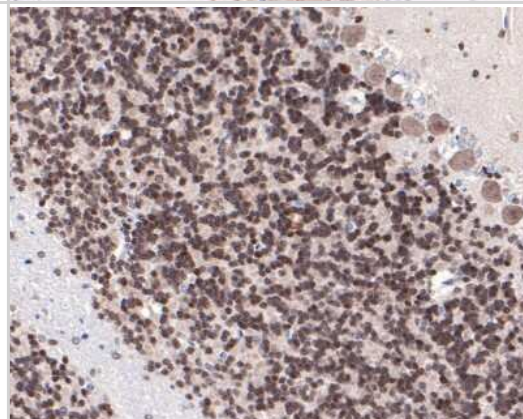
Immunohistochemistry-Paraffin: EMI1 Antibody (JG35-83) [NBP2-76833] - Analysis of paraffin-embedded mouse brain tissue with Rabbit anti-EMI1 antibody washed with ddH₂O and PBS, and then probed with the primary antibody at 1/400 dilution for 1 hour at room temperature. The detection was performed using an HRP conjugated compact polymer system. DAB was used as the chromogen. Tissues were counterstained with hematoxylin and mounted with DPX.



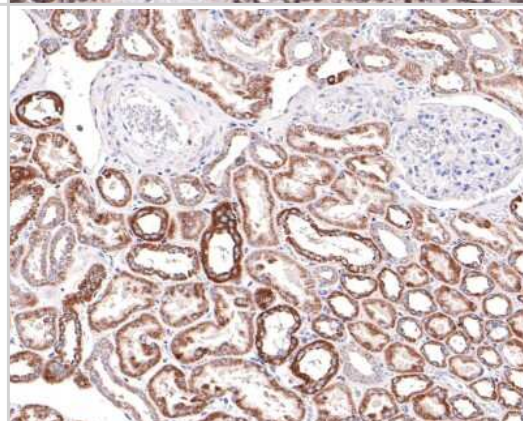
Immunohistochemistry-Paraffin: EMI1 Antibody (JG35-83) [NBP2-76833]
 - Analysis of paraffin-embedded mouse hippocampus tissue with Rabbit anti-EMI1 antibody washed with ddH₂O and PBS, and then probed with the primary antibody at 1/400 dilution for 1 hour at room temperature. The detection was performed using an HRP conjugated compact polymer system. DAB was used as the chromogen. Tissues were counterstained with hematoxylin and mounted with DPX.



Immunohistochemistry-Paraffin: EMI1 Antibody (JG35-83) [NBP2-76833]
 - Analysis of paraffin-embedded mouse cerebellum tissue with Rabbit anti-EMI1 antibody washed with ddH₂O and PBS, and then probed with the primary antibody at 1/100 dilution for 1 hour at room temperature. The detection was performed using an HRP conjugated compact polymer system. DAB was used as the chromogen. Tissues were counterstained with hematoxylin and mounted with DPX.



Immunohistochemistry-Paraffin: EMI1 Antibody (JG35-83) [NBP2-76833]
 - Analysis of paraffin-embedded Human kidney with Rabbit anti-EMI1 antibody washed with ddH₂O and PBS, and then probed with the primary antibody at 1/400 dilution for 1 hour at room temperature. The detection was performed using an HRP conjugated compact polymer system. DAB was used as the chromogen. Tissues were counterstained with hematoxylin and mounted with DPX.



Publications

Kang JW, Zhan Z, Ji G et al. PUMA facilitates EMI1-promoted cytoplasmic Rad51 ubiquitination and inhibits DNA repair in stem and progenitor cells Signal transduction and targeted therapy 2021-03-31 [PMID: 33785736] (ICC/IF, Mouse)



Novus Biologicals USA

10730 E. Briarwood Avenue
Centennial, CO 80112
USA
Phone: 303.730.1950
Toll Free: 1.888.506.6887
Fax: 303.730.1966
nb-customerservice@bio-techne.com

Bio-Techne Canada

21 Canmotor Ave
Toronto, ON M8Z 4E6
Canada
Phone: 905.827.6400
Toll Free: 855.668.8722
Fax: 905.827.6402
canada.inquires@bio-techne.com

Bio-Techne Ltd

19 Barton Lane
Abingdon Science Park
Abingdon, OX14 3NB, United Kingdom
Phone: (44) (0) 1235 529449
Free Phone: 0800 37 34 15
Fax: (44) (0) 1235 533420
info.EMEA@bio-techne.com

General Contact Information

www.novusbio.com
Technical Support: nb-technical@bio-techne.com
Orders: nb-customerservice@bio-techne.com
General: novus@novusbio.com

Limitations

This product is for research use only and is not approved for use in humans or in clinical diagnosis. Primary Antibodies are guaranteed for 1 year from date of receipt.

For more information on our 100% guarantee, please visit www.novusbio.com/guarantee

Earn gift cards/discounts by submitting a review: www.novusbio.com/reviews/submit/NBP2-76833

Earn gift cards/discounts by submitting a publication using this product:
www.novusbio.com/publications

