

# Product Datasheet

## **Siglec-3/CD33 Antibody (hP67.6 (Gemtuzumab)) [mFluor Violet 500 SE] NBP2-75906MFV500**

Unit Size: 0.1 ml

Store at 4C in the dark.

[www.novusbio.com](http://www.novusbio.com)



[technical@novusbio.com](mailto:technical@novusbio.com)

Protocols, Publications, Related Products, Reviews, Research Tools and Images at:  
[www.novusbio.com/NBP2-75906MFV500](http://www.novusbio.com/NBP2-75906MFV500)

Updated 9/20/2023 v.20.1

Earn rewards for product  
reviews and publications.

Submit a publication at [www.novusbio.com/publications](http://www.novusbio.com/publications)

Submit a review at [www.novusbio.com/reviews/destination/NBP2-75906MFV500](http://www.novusbio.com/reviews/destination/NBP2-75906MFV500)



**NBP2-75906MFV500**

Siglec-3/CD33 Antibody (hP67.6 (Gemtuzumab)) [mFluor Violet 500 SE]

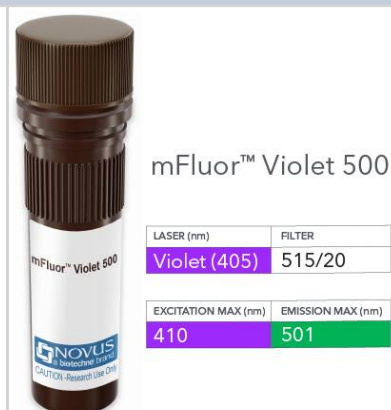
Product Information	
Unit Size	0.1 ml
Concentration	Please see the vial label for concentration. If unlisted please contact technical services.
Storage	Store at 4C in the dark.
Clonality	Monoclonal
Clone	hP67.6 (Gemtuzumab)
Preservative	0.05% Sodium Azide
Isotype	IgG Kappa
Conjugate	mFluor Violet 500 SE
Purity	Protein A purified
Buffer	50mM Sodium Borate

Product Description	
Host	Rabbit
Gene ID	945
Gene Symbol	CD33
Species	Human
Specificity/Sensitivity	Recognises human CD33.
Immunogen	Gemtuzumab was generated by humanization of the murine P67.6 clone, raised against CD33-transfected FMY9S5 cells of human origin. CD33 is a transmembrane receptor expressed on predominantly on cells of the myeloid lineage, but it can also be found on some lymphoid cells.

Product Application Details	
Applications	Flow Cytometry, Immunocytochemistry/Immunofluorescence
Recommended Dilutions	Flow Cytometry, Immunocytochemistry/Immunofluorescence
Application Notes	Optimal dilution of this antibody should be experimentally determined.

**Images**

Siglec-3/CD33 Antibody (hP67.6 (Gemtuzumab)) [mFluor Violet 500 SE]  
 - Vial of mFluor Violet 500 conjugated antibody. mFluor Violet 500 is optimally excited at 410 nm by the Violet laser (405 nm) and has an emission maximum of 501 nm.





### **Novus Biologicals USA**

10730 E. Briarwood Avenue  
Centennial, CO 80112  
USA  
Phone: 303.730.1950  
Toll Free: 1.888.506.6887  
Fax: 303.730.1966  
nb-customerservice@bio-techne.com

### **Bio-Techne Canada**

21 Canmotor Ave  
Toronto, ON M8Z 4E6  
Canada  
Phone: 905.827.6400  
Toll Free: 855.668.8722  
Fax: 905.827.6402  
canada.inquires@bio-techne.com

### **Bio-Techne Ltd**

19 Barton Lane  
Abingdon Science Park  
Abingdon, OX14 3NB, United Kingdom  
Phone: (44) (0) 1235 529449  
Free Phone: 0800 37 34 15  
Fax: (44) (0) 1235 533420  
info.EMEA@bio-techne.com

### **General Contact Information**

[www.novusbio.com](http://www.novusbio.com)  
Technical Support: nb-technical@bio-techne.com  
Orders: nb-customerservice@bio-techne.com  
General: novus@novusbio.com

### **Products Related to NBP2-75906MFV500**

---

NBP2-32709PEP	Siglec-3/CD33 Recombinant Protein Antigen
DC140	CD14 [HRP]
1137-SL-050	Siglec-3/CD33 [Unconjugated]
NB110-89474	CD11b Antibody - BSA Free

---

### **Limitations**

This product is for research use only and is not approved for use in humans or in clinical diagnosis. Primary Antibodies are guaranteed for 1 year from date of receipt.

For more information on our 100% guarantee, please visit [www.novusbio.com/guarantee](http://www.novusbio.com/guarantee)

Earn gift cards/discounts by submitting a review: [www.novusbio.com/reviews/submit/NBP2-75906MFV500](http://www.novusbio.com/reviews/submit/NBP2-75906MFV500)

Earn gift cards/discounts by submitting a publication using this product:  
[www.novusbio.com/publications](http://www.novusbio.com/publications)

