

Product Datasheet

PYCRL Antibody (OTI1B12) [mFluor Violet 610 SE] NBP2-73752MFV610

Unit Size: 0.1 ml

Store at 4C in the dark.

www.novusbio.com



technical@novusbio.com

Protocols, Publications, Related Products, Reviews, Research Tools and Images at:
www.novusbio.com/NBP2-73752MFV610

Updated 11/9/2023 v.20.1

**Earn rewards for product
reviews and publications.**

Submit a publication at www.novusbio.com/publications

Submit a review at www.novusbio.com/reviews/destination/NBP2-73752MFV610



NBP2-73752MFV610

PYCRL Antibody (OTI1B12) [mFluor Violet 610 SE]

Product Information

Unit Size	0.1 ml
Concentration	Please see the vial label for concentration. If unlisted please contact technical services.
Storage	Store at 4C in the dark.
Clonality	Monoclonal
Clone	OTI1B12
Preservative	0.05% Sodium Azide
Isotype	IgG1
Conjugate	mFluor Violet 610 SE
Purity	Immunogen affinity purified
Buffer	50mM Sodium Borate

Product Description

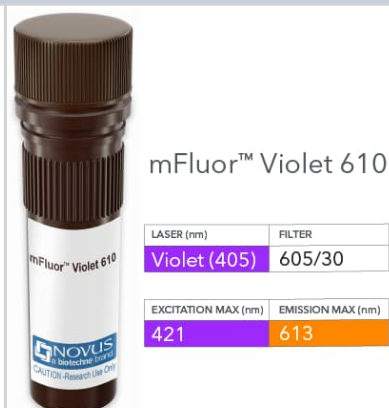
Host	Mouse
Gene ID	65263
Gene Symbol	PYCR3
Species	Human, Rat
Immunogen	Full length human recombinant protein of human PYCRL (NP_075566) produced in HEK293T cell.

Product Application Details

Applications	Western Blot, Flow Cytometry, Immunocytochemistry/Immunofluorescence, Immunohistochemistry-Paraffin
Recommended Dilutions	Western Blot, Flow Cytometry, Immunocytochemistry/Immunofluorescence, Immunohistochemistry-Paraffin
Application Notes	Optimal dilution of this antibody should be experimentally determined.

Images

PYCRL Antibody (OTI1B12) [mFluor Violet 610 SE] [NBP2-73752MFV610] - Vial of mFluor Violet 610 conjugated antibody. mFluor Violet 610 is optimally excited at 421 nm by the Violet laser (405 nm) and has an emission maximum of 613 nm.





Novus Biologicals USA

10730 E. Briarwood Avenue
Centennial, CO 80112
USA
Phone: 303.730.1950
Toll Free: 1.888.506.6887
Fax: 303.730.1966
nb-customerservice@bio-techne.com

Bio-Techne Canada

21 Canmotor Ave
Toronto, ON M8Z 4E6
Canada
Phone: 905.827.6400
Toll Free: 855.668.8722
Fax: 905.827.6402
canada.inquires@bio-techne.com

Bio-Techne Ltd

19 Barton Lane
Abingdon Science Park
Abingdon, OX14 3NB, United Kingdom
Phone: (44) (0) 1235 529449
Free Phone: 0800 37 34 15
Fax: (44) (0) 1235 533420
info.EMEA@bio-techne.com

General Contact Information

www.novusbio.com
Technical Support: nb-technical@bio-techne.com
Orders: nb-customerservice@bio-techne.com
General: novus@novusbio.com

Products Related to NBP2-73752MFV610

NBP2-23389	Recombinant Human PYCRL His Protein
788-G8-010/CF	GDF-8/Myostatin [Unconjugated]
NBL1-15019	PYCRL Overexpression Lysate
MAB4470	Myosin Heavy Chain Antibody (MF20) [Unconjugated]

Limitations

This product is for research use only and is not approved for use in humans or in clinical diagnosis. Primary Antibodies are guaranteed for 1 year from date of receipt.

For more information on our 100% guarantee, please visit www.novusbio.com/guarantee

Earn gift cards/discounts by submitting a review: www.novusbio.com/reviews/submit/NBP2-73752MFV610

Earn gift cards/discounts by submitting a publication using this product:
www.novusbio.com/publications

