

# Product Datasheet

## DCLRE1B Antibody (OTI2B7) [mFluor Violet 500 SE] NBP2-72152MFV500

Unit Size: 0.1 ml

Store at 4C in the dark.

[www.novusbio.com](http://www.novusbio.com)



[technical@novusbio.com](mailto:technical@novusbio.com)

Protocols, Publications, Related Products, Reviews, Research Tools and Images at:  
[www.novusbio.com/NBP2-72152MFV500](http://www.novusbio.com/NBP2-72152MFV500)

Updated 11/9/2023 v.20.1

Earn rewards for product  
reviews and publications.

Submit a publication at [www.novusbio.com/publications](http://www.novusbio.com/publications)

Submit a review at [www.novusbio.com/reviews/destination/NBP2-72152MFV500](http://www.novusbio.com/reviews/destination/NBP2-72152MFV500)



**NBP2-72152MFV500**

DCLRE1B Antibody (OTI2B7) [mFluor Violet 500 SE]

**Product Information**

<b>Unit Size</b>	0.1 ml
<b>Concentration</b>	Please see the vial label for concentration. If unlisted please contact technical services.
<b>Storage</b>	Store at 4C in the dark.
<b>Clonality</b>	Monoclonal
<b>Clone</b>	OTI2B7
<b>Preservative</b>	0.05% Sodium Azide
<b>Isotype</b>	IgG1
<b>Conjugate</b>	mFluor Violet 500 SE
<b>Purity</b>	Immunogen affinity purified
<b>Buffer</b>	50mM Sodium Borate

**Product Description**

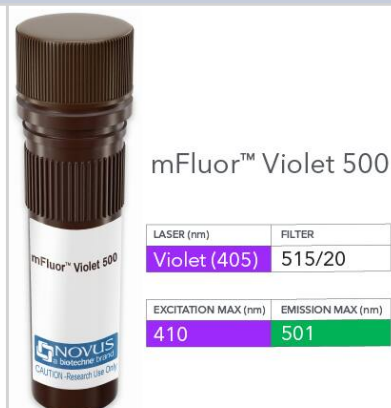
<b>Host</b>	Mouse
<b>Gene ID</b>	64858
<b>Gene Symbol</b>	DCLRE1B
<b>Species</b>	Human, Rat
<b>Immunogen</b>	Human recombinant protein fragment corresponding to amino acids 1-280 of human DCLRE1B(NP_073747) produced in E.coli.

**Product Application Details**

<b>Applications</b>	Western Blot, Flow Cytometry, Immunocytochemistry/Immunofluorescence, Immunohistochemistry-Paraffin
<b>Recommended Dilutions</b>	Western Blot, Flow Cytometry, Immunocytochemistry/Immunofluorescence, Immunohistochemistry-Paraffin
<b>Application Notes</b>	Optimal dilution of this antibody should be experimentally determined.

**Images**

DCLRE1B Antibody (OTI2B7) [mFluor Violet 500 SE] - Vial of mFluor Violet 500 conjugated antibody. mFluor Violet 500 is optimally excited at 410 nm by the Violet laser (405 nm) and has an emission maximum of 501 nm.





### **Novus Biologicals USA**

10730 E. Briarwood Avenue  
Centennial, CO 80112  
USA  
Phone: 303.730.1950  
Toll Free: 1.888.506.6887  
Fax: 303.730.1966  
nb-customerservice@bio-techne.com

### **Bio-Techne Canada**

21 Canmotor Ave  
Toronto, ON M8Z 4E6  
Canada  
Phone: 905.827.6400  
Toll Free: 855.668.8722  
Fax: 905.827.6402  
canada.inquires@bio-techne.com

### **Bio-Techne Ltd**

19 Barton Lane  
Abingdon Science Park  
Abingdon, OX14 3NB, United Kingdom  
Phone: (44) (0) 1235 529449  
Free Phone: 0800 37 34 15  
Fax: (44) (0) 1235 533420  
info.EMEA@bio-techne.com

### **General Contact Information**

[www.novusbio.com](http://www.novusbio.com)  
Technical Support: nb-technical@bio-techne.com  
Orders: nb-customerservice@bio-techne.com  
General: novus@novusbio.com

### **Products Related to NBP2-72152MFV500**

H00064858-P01-2ug	Recombinant Human DCLRE1B GST (N-Term) Protein
664-LI-025	LIGHT/TNFSF14 [Unconjugated]
NBL1-09742	DCLRE1B Overexpression Lysate
NB100-182	FANCD2 Antibody - BSA Free

### **Limitations**

This product is for research use only and is not approved for use in humans or in clinical diagnosis. Primary Antibodies are guaranteed for 1 year from date of receipt.

For more information on our 100% guarantee, please visit [www.novusbio.com/guarantee](http://www.novusbio.com/guarantee)

Earn gift cards/discounts by submitting a review: [www.novusbio.com/reviews/submit/NBP2-72152MFV500](http://www.novusbio.com/reviews/submit/NBP2-72152MFV500)

Earn gift cards/discounts by submitting a publication using this product:  
[www.novusbio.com/publications](http://www.novusbio.com/publications)

