

Product Datasheet

CD1c/BDCA-1 Antibody (L161) [PE] NBP2-62220PE

Unit Size: 0.1 ml

Store at 4C in the dark.

www.novusbio.com



technical@novusbio.com

Protocols, Publications, Related Products, Reviews, Research Tools and Images at:
www.novusbio.com/NBP2-62220PE

Updated 7/11/2023 v.20.1

Earn rewards for product
reviews and publications.

Submit a publication at www.novusbio.com/publications

Submit a review at www.novusbio.com/reviews/destination/NBP2-62220PE



NBP2-62220PE

CD1c/BDCA-1 Antibody (L161) [PE]

Product Information

Unit Size	0.1 ml
Concentration	Please see the vial label for concentration. If unlisted please contact technical services.
Storage	Store at 4C in the dark.
Clonality	Monoclonal
Clone	L161
Preservative	0.05% Sodium Azide
Isotype	IgG1 Kappa
Conjugate	PE
Purity	Protein A purified
Buffer	PBS

Product Description

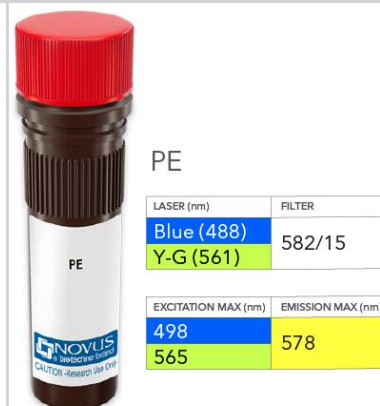
Host	Mouse
Gene ID	911
Gene Symbol	CD1C
Species	Human
Specificity/Sensitivity	The antibody MEM-97 reacts with CD20 (Bp35), a 33-37 kDa non-glycosylated membrane receptor with four transmembrane domains, expressed on B lymphocytes (it is lost on plasma cells), follicular dendritic cells, and at low levels on peripheral blood T lymphocytes.
Immunogen	human thymocytes

Product Application Details

Applications	Flow Cytometry, Flow (Cell Surface), Immunohistochemistry, Immunoprecipitation
Recommended Dilutions	Flow Cytometry, Immunohistochemistry, Immunoprecipitation, Flow (Cell Surface)
Application Notes	Optimal dilution of this antibody should be experimentally determined.

Images

CD1c/BDCA-1 Antibody (L161) [PE] [NBP2-62220PE] - Vial of PE conjugated antibody. PE has two excitation maxima, 498 nm excited by the Blue laser (488 nm) and 565 nm excited by the Yellow-Green laser (561 nm). Both result in emission at 578 nm.





Novus Biologicals USA

10730 E. Briarwood Avenue
Centennial, CO 80112
USA
Phone: 303.730.1950
Toll Free: 1.888.506.6887
Fax: 303.730.1966
nb-customerservice@bio-techne.com

Bio-Techne Canada

21 Canmotor Ave
Toronto, ON M8Z 4E6
Canada
Phone: 905.827.6400
Toll Free: 855.668.8722
Fax: 905.827.6402
canada.inquires@bio-techne.com

Bio-Techne Ltd

19 Barton Lane
Abingdon Science Park
Abingdon, OX14 3NB, United Kingdom
Phone: (44) (0) 1235 529449
Free Phone: 0800 37 34 15
Fax: (44) (0) 1235 533420
info.EMEA@bio-techne.com

General Contact Information

www.novusbio.com
Technical Support: nb-technical@bio-techne.com
Orders: nb-customerservice@bio-techne.com
General: novus@novusbio.com

Products Related to NBP2-62220PE

NBP1-43319PE-0.5ml	Mouse IgG1 Kappa Isotype Control (P3.6.2.8.1) [PE]
H00000911-Q01-10ug	Recombinant Human CD1c/BDCA-1 GST (N-Term) Protein
210-TA-005	TNF-alpha [Unconjugated]
NBP2-08178	CD1c/BDCA-1 Overexpression Lysate

Limitations

This product is for research use only and is not approved for use in humans or in clinical diagnosis. Primary Antibodies are guaranteed for 1 year from date of receipt.

For more information on our 100% guarantee, please visit www.novusbio.com/guarantee

Earn gift cards/discounts by submitting a review: www.novusbio.com/reviews/submit/NBP2-62220PE

Earn gift cards/discounts by submitting a publication using this product:
www.novusbio.com/publications

