

Product Datasheet

OPAL1 Antibody (OPAL1-01) [mFluor Violet 610 SE] NBP2-62210MFV610

Unit Size: 0.1 ml

Store at 4C in the dark.

www.novusbio.com



technical@novusbio.com

Protocols, Publications, Related Products, Reviews, Research Tools and Images at:
www.novusbio.com/NBP2-62210MFV610

Updated 9/20/2023 v.20.1

Earn rewards for product
reviews and publications.

Submit a publication at www.novusbio.com/publications

Submit a review at www.novusbio.com/reviews/destination/NBP2-62210MFV610



NBP2-62210MFV610

OPAL1 Antibody (OPAL1-01) [mFluor Violet 610 SE]

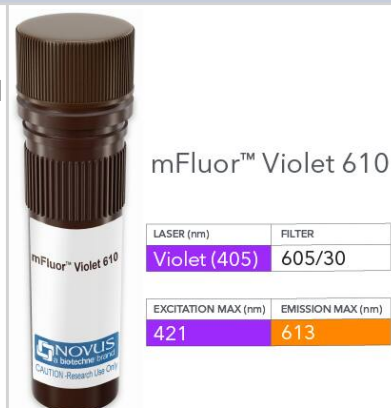
Product Information	
Unit Size	0.1 ml
Concentration	Please see the vial label for concentration. If unlisted please contact technical services.
Storage	Store at 4C in the dark.
Clonality	Monoclonal
Clone	OPAL1-01
Preservative	0.05% Sodium Azide
Isotype	IgG2a
Conjugate	mFluor Violet 610 SE
Purity	Protein A purified
Buffer	50mM Sodium Borate

Product Description	
Host	Mouse
Gene ID	54838
Gene Symbol	WBP1L
Species	Human
Specificity/Sensitivity	The antibody HCG-61 reacts with beta-subunit of human chorionic gonadotropin, a 40 kDa hormone. hCG belongs to the glycoprotein hormone family together with lutropin (LH), follitropin (FSH) and thyrotropin (TSH). hCG is synthesised by trophoblastic cells of the placenta during pregnancy and stimulates the growth of corpus luteum. Following cross-reactivity (%) was determined by classic double-antibody RIA using unlabelled hormones: beta-hCG (77), alpha-hCG (1.3), hLH (0.86), hFSH (< 0.5), hTSH (< 0.5).
Immunogen	Recombinant fragment of human OPAL1 (amino acids 152-342)

Product Application Details	
Applications	Western Blot, Flow Cytometry, Flow (Intracellular)
Recommended Dilutions	Western Blot, Flow Cytometry, Flow (Intracellular)
Application Notes	Optimal dilution of this antibody should be experimentally determined.

Images

OPAL1 Antibody (OPAL1-01) [mFluor Violet 610 SE] [NBP2-62210MFV610] - Vial of mFluor Violet 610 conjugated antibody. mFluor Violet 610 is optimally excited at 421 nm by the Violet laser (405 nm) and has an emission maximum of 613 nm.





Novus Biologicals USA

10730 E. Briarwood Avenue
Centennial, CO 80112
USA
Phone: 303.730.1950
Toll Free: 1.888.506.6887
Fax: 303.730.1966
nb-customerservice@bio-techne.com

Bio-Techne Canada

21 Canmotor Ave
Toronto, ON M8Z 4E6
Canada
Phone: 905.827.6400
Toll Free: 855.668.8722
Fax: 905.827.6402
canada.inquires@bio-techne.com

Bio-Techne Ltd

19 Barton Lane
Abingdon Science Park
Abingdon, OX14 3NB, United Kingdom
Phone: (44) (0) 1235 529449
Free Phone: 0800 37 34 15
Fax: (44) (0) 1235 533420
info.EMEA@bio-techne.com

General Contact Information

www.novusbio.com
Technical Support: nb-technical@bio-techne.com
Orders: nb-customerservice@bio-techne.com
General: novus@novusbio.com

Products Related to NBP2-62210MFV610

NBP2-34045PEP	OPAL1 Recombinant Protein Antigen
H00000415-Q01-10ug	Recombinant Human ARSE GST (N-Term) Protein
NBP2-06926	OPAL1 Overexpression Lysate
AF1759	Oct-3/4 Antibody [Unconjugated]

Limitations

This product is for research use only and is not approved for use in humans or in clinical diagnosis. Primary Antibodies are guaranteed for 1 year from date of receipt.

For more information on our 100% guarantee, please visit www.novusbio.com/guarantee

Earn gift cards/discounts by submitting a review: www.novusbio.com/reviews/submit/NBP2-62210MFV610

Earn gift cards/discounts by submitting a publication using this product:
www.novusbio.com/publications

