

Product Datasheet

IL-36Ra/IL-1F5 Antibody [PE]

NBP2-41241PE

Unit Size: 0.1 ml

Store at 4C in the dark.

www.novusbio.com



technical@novusbio.com

Reviews: 1

Protocols, Publications, Related Products, Reviews, Research Tools and Images at:
www.novusbio.com/NBP2-41241PE

Updated 10/20/2025 v.20.1

Earn rewards for product
reviews and publications.

Submit a publication at www.novusbio.com/publications

Submit a review at www.novusbio.com/reviews/destination/NBP2-41241PE



NBP2-41241PE

IL-36Ra/IL-1F5 Antibody [PE]

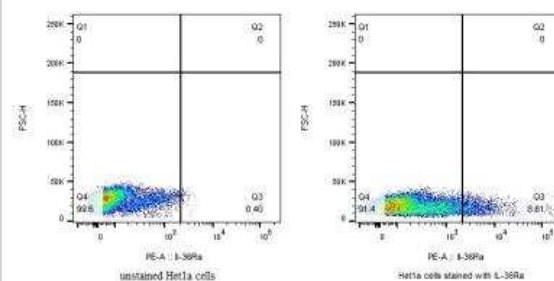
Product Information	
Unit Size	0.1 ml
Concentration	Please see the vial label for concentration. If unlisted please contact technical services.
Storage	Store at 4C in the dark.
Clonality	Polyclonal
Preservative	0.05% Sodium Azide
Isotype	IgG
Conjugate	PE
Purity	Peptide affinity purified
Buffer	PBS
Target Molecular Weight	24 kDa

Product Description	
Host	Rabbit
Gene ID	26525
Gene Symbol	IL36RN
Species	Human, Mouse
Specificity/Sensitivity	At least two isoforms of IL-36RN are known to exist
Immunogen	Antibody was raised against a 19 amino acid peptide near the carboxy terminus of human IL-36RN. The immunogen is located within the last 50 amino acids of IL-36RN. Amino Acid Sequence: PEADQPVRLTQLPENGAWN

Product Application Details	
Applications	Western Blot, Immunohistochemistry-Paraffin, ELISA, Flow Cytometry, Immunocytochemistry/ Immunofluorescence, Immunohistochemistry
Recommended Dilutions	Western Blot, Flow Cytometry, ELISA, Immunohistochemistry, Immunocytochemistry/ Immunofluorescence, Immunohistochemistry-Paraffin
Application Notes	Optimal dilution of this antibody should be experimentally determined. IL-36Ra/IL-1F5 Antibody [PE] validated for Flow cytometry from a verified customer review.

Images

Flow Cytometry: IL-36Ra/IL-1F5 Antibody [PE] [NBP2-41241PE] - Het1a normal esophageal cell line. Basal expression of IL-36a receptor on the surface of normal esophageal cells. Flow cytometry image submitted by a verified customer review.





Novus Biologicals USA

10730 E. Briarwood Avenue
Centennial, CO 80112
USA
Phone: 303.730.1950
Toll Free: 1.888.506.6887
Fax: 303.730.1966
nb-customerservice@bio-techne.com

Bio-Techne Canada

21 Canmotor Ave
Toronto, ON M8Z 4E6
Canada
Phone: 905.827.6400
Toll Free: 855.668.8722
Fax: 905.827.6402
canada.inquires@bio-techne.com

Bio-Techne Ltd

19 Barton Lane
Abingdon Science Park
Abingdon, OX14 3NB, United Kingdom
Phone: (44) (0) 1235 529449
Free Phone: 0800 37 34 15
Fax: (44) (0) 1235 533420
info.EMEA@bio-techne.com

General Contact Information

www.novusbio.com
Technical Support: nb-technical@bio-techne.com
Orders: nb-customerservice@bio-techne.com
General: novus@novusbio.com

Products Related to NBP2-41241PE

NBP2-24983	Rabbit IgG Isotype Control [PE]
NBP2-35125-100ug	Recombinant Mouse IL-36Ra/IL-1F5 Protein
217-IL-005	IL-10 [Unconjugated]
1275-IL-025/CF	IL-36Ra/IL-1F5 [Unconjugated]

Limitations

This product is for research use only and is not approved for use in humans or in clinical diagnosis. Primary Antibodies are guaranteed for 1 year from date of receipt.

For more information on our 100% guarantee, please visit www.novusbio.com/guarantee

Earn gift cards/discounts by submitting a review: www.novusbio.com/reviews/submit/NBP2-41241PE

Earn gift cards/discounts by submitting a publication using this product:
www.novusbio.com/publications

