

Product Datasheet

Cyclin D1 Antibody (SPM587) - Azide and BSA Free NBP2-34816-0.1mg

Unit Size: 0.1 mg

Store at -20 to -80C. Avoid freeze-thaw cycles.

www.novusbio.com



technical@novusbio.com

Protocols, Publications, Related Products, Reviews, Research Tools and Images at:
www.novusbio.com/NBP2-34816

Updated 7/16/2024 v.20.1

Earn rewards for product
reviews and publications.

Submit a publication at www.novusbio.com/publications

Submit a review at www.novusbio.com/reviews/destination/NBP2-34816



NBP2-34816-0.1mg

Cyclin D1 Antibody (SPM587) - Azide and BSA Free

Product Information	
Unit Size	0.1 mg
Concentration	1.0 mg/ml
Storage	Store at -20 to -80C. Avoid freeze-thaw cycles.
Clonality	Monoclonal
Clone	SPM587
Preservative	No Preservative
Isotype	IgG2a Kappa
Purity	Protein A or G purified
Buffer	10 mM PBS
Target Molecular Weight	36 kDa

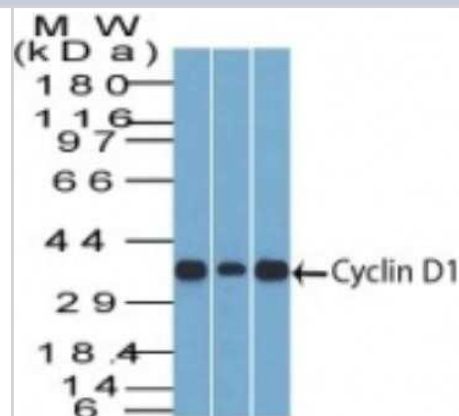
Product Description	
Description	1.0 mg/ml of antibody purified from Bioreactor Concentrate by Protein A/G. Prepared in 10mM PBS WITHOUT BSA & azide. Also available at 200 ug/ml WITH BSA & azide (NBP2-32840). Antibody with azide - store at 2 to 8C. Antibody without azide - store at -20 to -80C.
Host	Mouse
Gene ID	595
Gene Symbol	CCND1
Species	Human, Mouse, Rat, Monkey
Marker	G1-Cyclin & Mantle Cell Marker
Specificity/Sensitivity	Recognizes a protein of 36kDa, identified as cyclin D1. Cyclin D1, one of the key cell cycle regulators, is a putative proto-oncogene overexpressed in a wide variety of human neoplasms. This antibody neutralizes the activity of cyclin D1 in vivo. About 60% of mantle cell lymphomas (MCL) contain a t(11; 14)(q13; q32) translocation resulting in over-expression of cyclin D1. This antibody is useful in identifying mantle cell lymphomas (cyclin D1 positive) from CLL/SLL and follicular lymphomas (cyclin D1 negative). Occasionally, hairy cell leukemia and plasma cell myeloma weakly express Cyclin D1.
Immunogen	Human recombinant full length cyclin D1 protein (Uniprot: P24385)

Product Application Details	
Applications	Western Blot, Flow Cytometry, Immunocytochemistry/ Immunofluorescence, Immunohistochemistry, Immunohistochemistry-Paraffin, CyTOF-ready
Recommended Dilutions	Western Blot 0.5-1ug/ml, Flow Cytometry 0.5-1ug/million cells, Immunohistochemistry, Immunocytochemistry/ Immunofluorescence 1-2ug/ml, Immunohistochemistry-Paraffin 0.5-1ug/ml, CyTOF-ready
Application Notes	Immunohistochemistry (Formalin-fixed): 1-2ug/ml for 30 minutes at RT. Staining of formalin-fixed tissues requires heating tissue sections in 10mM Tris with 1mM EDTA, pH 9.0, for 45 min at 95C followed by cooling at RT for 20 minutes. Optimal dilution for a specific application should be determined. WB reported in a verified customer review.

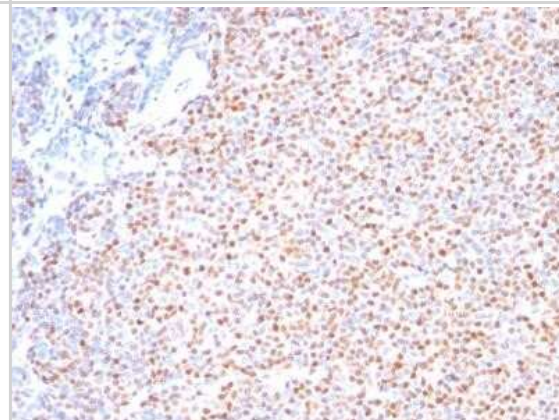


Images

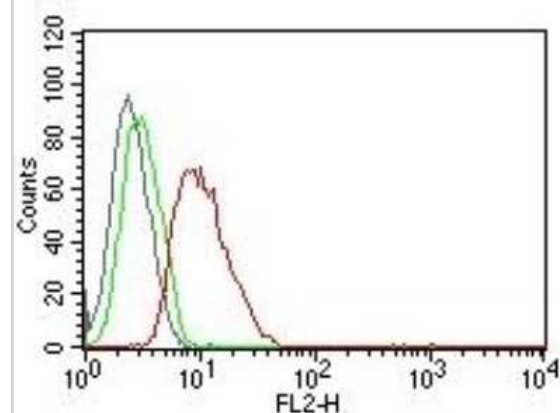
Western Blot: Cyclin D1 Antibody (SPM587) - Azide and BSA Free [NBP2-34816] - Western Blot of cyclin D1 in (1) C2C12 (2) HepG2 & (3) NIH3T3 Lysate with Cyclin D1 Ab (SPM587)



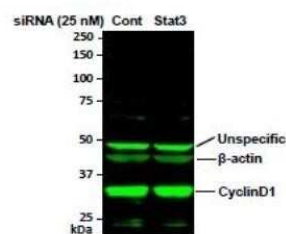
Immunohistochemistry-Paraffin: Cyclin D1 Antibody (SPM587) - Azide and BSA Free [NBP2-34816] - Formalin-paraffin human Mantle Cell Lymphoma stained with Cyclin D1 Ab (Clone SPM587).



Flow Cytometry: Cyclin D1 Antibody (SPM587) - Azide and BSA Free [NBP2-34816] - Flow Cytometric analysis of human Cyclin D1 on MCF-7 cells. Black: cells alone; Green: Isotype Control; Red: PE-labeled Cyclin D1 Monoclonal Antibody (SPM587).

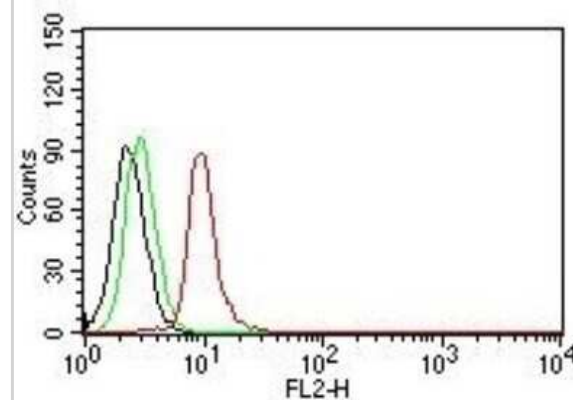


Western Blot: Cyclin D1 Antibody (SPM587) - Azide and BSA Free [NBP2-34816] - analysis of Cyclin D1 in human breast cancer cell line MDA-MB-231 cell lysate using anti-Cyclin D1. Image from verified customer review.



50 μ g of whole cell lysate of human breast cancer cell line MDA-MB-231 was used, and the NC membrane was blotted with primary antibodies against Cyclin D1 (mouse, NBP2-32840) and β -actin (mouse, Santa Cruz Biotech) and Li-Cor anti-mouse secondary antibody in TBS-T buffer.

Flow Cytometry: Cyclin D1 Antibody (SPM587) - Azide and BSA Free [NBP2-34816] - Flow Cytometric analysis of human Cyclin D1 on Jurkat cells. Black: cells alone; Green: Isotype Control; Red: PE-labeled Cyclin D1 Monoclonal Antibody (SPM587).





Novus Biologicals USA

10730 E. Briarwood Avenue
Centennial, CO 80112
USA
Phone: 303.730.1950
Toll Free: 1.888.506.6887
Fax: 303.730.1966
nb-customerservice@bio-techne.com

Bio-Techne Canada

21 Canmotor Ave
Toronto, ON M8Z 4E6
Canada
Phone: 905.827.6400
Toll Free: 855.668.8722
Fax: 905.827.6402
canada.inquires@bio-techne.com

Bio-Techne Ltd

19 Barton Lane
Abingdon Science Park
Abingdon, OX14 3NB, United Kingdom
Phone: (44) (0) 1235 529449
Free Phone: 0800 37 34 15
Fax: (44) (0) 1235 533420
info.EMEA@bio-techne.com

General Contact Information

www.novusbio.com
Technical Support: nb-technical@bio-techne.com
Orders: nb-customerservice@bio-techne.com
General: novus@novusbio.com

Products Related to NBP2-34816-0.1mg

HAF007	Goat anti-Mouse IgG Secondary Antibody [HRP]
NB720-B	Rabbit anti-Mouse IgG (H+L) Secondary Antibody [Biotin]
NBP1-96981-0.5mg	Mouse IgG2a Kappa Isotype Control (M2AK)
H00000595-P01-10ug	Recombinant Human Cyclin D1 GST (N-Term) Protein

Limitations

This product is for research use only and is not approved for use in humans or in clinical diagnosis. Primary Antibodies are guaranteed for 1 year from date of receipt.

For more information on our 100% guarantee, please visit www.novusbio.com/guarantee

Earn gift cards/discounts by submitting a review: www.novusbio.com/reviews/submit/NBP2-34816

Earn gift cards/discounts by submitting a publication using this product:
www.novusbio.com/publications

