

# Product Datasheet

## SUMO2/3 Antibody (SM23/496) - Azide and BSA Free NBP2-34717-0.1mg

Unit Size: 0.1 mg

Store at -20 to -80C. Avoid freeze-thaw cycles.

[www.novusbio.com](http://www.novusbio.com)



[technical@novusbio.com](mailto:technical@novusbio.com)

Protocols, Publications, Related Products, Reviews, Research Tools and Images at:  
[www.novusbio.com/NBP2-34717](http://www.novusbio.com/NBP2-34717)

Updated 7/16/2024 v.20.1

Earn rewards for product  
reviews and publications.

Submit a publication at [www.novusbio.com/publications](http://www.novusbio.com/publications)

Submit a review at [www.novusbio.com/reviews/destination/NBP2-34717](http://www.novusbio.com/reviews/destination/NBP2-34717)



**NBP2-34717-0.1mg**

SUMO2/3 Antibody (SM23/496) - Azide and BSA Free

| Product Information         |   |
|-----------------------------|---|
| Unit Size                   | 0.1 mg  |
| Concentration               | 1.0 mg/ml   |
| Storage                     | Store at -20 to -80C. Avoid freeze-thaw cycles.   |
| Clonality                   | Monoclonal  |
| Clone                       | SM23/496  |
| Preservative                | No Preservative   |
| Isotype                     | IgG1 Kappa  |
| Purity                      | Protein A or G purified   |
| Buffer                      | 10 mM PBS   |
| Product Description         |   |
| Description                 | <p>1.0 mg/ml of antibody purified from Bioreactor Concentrate by Protein A/G. Prepared in 10mM PBS WITHOUT BSA &amp; azide. Also available at 200 ug/ml WITH BSA &amp; azide (NBP2-34292).</p> <p>Antibody with azide - store at 2 to 8C. Antibody without azide - store at -20 to -80C.</p>  |
| Host                        | Mouse   |
| Gene ID                     | 6613  |
| Gene Symbol                 | SUMO2   |
| Species                     | Human   |
| Reactivity Notes            | Predicted to show a broad species reactivity.   |
| Specificity/Sensitivity     | <p>This monoclonal antibody reacts with both SUMO-2 and SUMO-3. The small ubiquitin-related modifier (SUMO) proteins, which include SUMO-1, 2 and 3, belong to the ubiquitin-like protein family. Like ubiquitin, the SUMO proteins are synthesized as precursor proteins that undergo processing before conjugation to target proteins. Also, both utilize the E1, E2 and E3 cascade enzymes for conjugation. However, SUMO and ubiquitin differ with respect to targeting. Ubiquitination predominantly targets proteins for degradation, whereas sumoylation targets proteins to a variety of cellular processing, including nuclear transport, transcriptional regulation, apoptosis and protein stability. The unconjugated SUMO-1, 2 and 3 proteins localize to the nuclear membrane, nuclear bodies and cytoplasm, respectively. SUMO-1 utilizes Ubc9 for conjugation to several target proteins, which include MDM2, p53, PML and RanGap1. SUMO-2 and 3 contribute to a greater percentage of protein modification than does SUMO-1. In addition, SUMO-3 regulates beta-Amyloid generation and may be critical in the onset or progression of Alzheimers disease.</p> |
| Immunogen                   | Recombinant human SUMO2/3 protein   |
| Product Application Details |   |
| Applications                | Western Blot, Flow Cytometry, Flow (Intracellular), Immunocytochemistry/Immunofluorescence, Immunohistochemistry, Immunohistochemistry-Paraffin, CyTOF-ready  |
| Recommended Dilutions       | Western Blot 0.5-1ug/ml, Flow Cytometry 0.5-1ug/million cells, Immunohistochemistry, Immunocytochemistry/ Immunofluorescence 0.5-1ug/ml, Immunohistochemistry-Paraffin 0.5-1ug/ml, Flow (Intracellular), CyTOF-ready  |

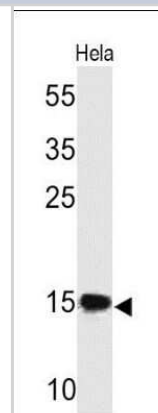


**Application Notes**

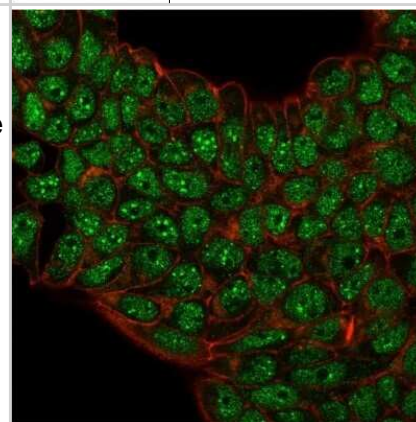
Immunohistochemistry (Formalin-fixed): 1-2ug/ml for 30 minutes at RT. Staining of formalin-fixed tissues requires heating tissue sections in 10mM Tris with 1mM EDTA, pH 9.0, for 45 min at 95C followed by cooling at RT for 20 minutes. Optimal dilution for a specific application should be determined.

**Images**

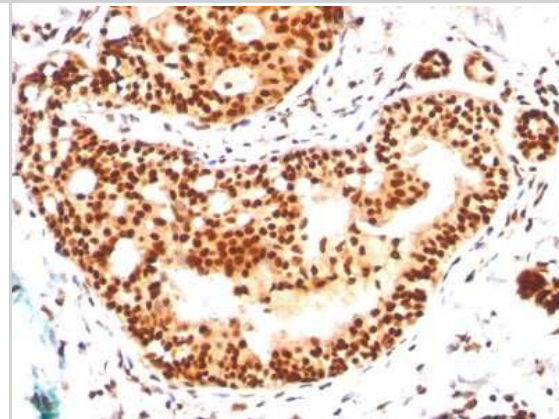
Western Blot: SUMO2/3 Antibody (SM23/496) - Azide and BSA Free [NBP2-34717] - analysis of SUMO-2 in human HeLa Cell lysate



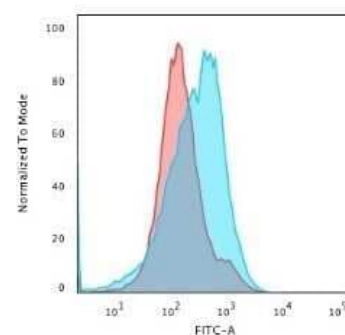
Immunocytochemistry/Immunofluorescence: SUMO2/3 Antibody (SM23/496) - Azide and BSA Free [NBP2-34717] - Immunofluorescence staining of paraformaldehyde-fixed MCF-7 cells with SUMO2/3 Antibody (SM23/496) followed by goat anti-Mouse IgG-CF488 (Green). Membrane are labeled with Phalloidin (Red).



Immunohistochemistry-Paraffin: SUMO2/3 Antibody (SM23/496) - Azide and BSA Free [NBP2-34717] - Formalin-paraffin human Breast Ca



Flow Cytometry: SUMO2/3 Antibody (SM23/496) - Azide and BSA Free [NBP2-34717] - Flow Cytometric Analysis of paraformaldehyde-fixed HepG2 cells using SUMO2/3 Antibody (SM23/496).followed by goat anti-Mouse- IgG-CF488 (Blue); Isotype Control (Red).





### Novus Biologicals USA

10730 E. Briarwood Avenue  
Centennial, CO 80112  
USA  
Phone: 303.730.1950  
Toll Free: 1.888.506.6887  
Fax: 303.730.1966  
nb-customerservice@bio-techne.com

### Bio-Techne Canada

21 Canmotor Ave  
Toronto, ON M8Z 4E6  
Canada  
Phone: 905.827.6400  
Toll Free: 855.668.8722  
Fax: 905.827.6402  
canada.inquires@bio-techne.com

### Bio-Techne Ltd

19 Barton Lane  
Abingdon Science Park  
Abingdon, OX14 3NB, United Kingdom  
Phone: (44) (0) 1235 529449  
Free Phone: 0800 37 34 15  
Fax: (44) (0) 1235 533420  
info.EMEA@bio-techne.com

### General Contact Information

www.novusbio.com  
Technical Support: nb-technical@bio-techne.com  
Orders: nb-customerservice@bio-techne.com  
General: novus@novusbio.com

### Products Related to NBP2-34717-0.1mg

|                  |   |
|------------------|---|
| HAF007           | Goat anti-Mouse IgG Secondary Antibody [HRP]            |
| NB720-B          | Rabbit anti-Mouse IgG (H+L) Secondary Antibody [Biotin] |
| NBP1-43319-0.5mg | Mouse IgG1 Kappa Isotype Control (P3.6.2.8.1)           |
| NB200-103        | p53 Antibody (PAb 240) - BSA Free                       |

### Limitations

This product is for research use only and is not approved for use in humans or in clinical diagnosis. Primary Antibodies are guaranteed for 1 year from date of receipt.

For more information on our 100% guarantee, please visit [www.novusbio.com/guarantee](http://www.novusbio.com/guarantee)

Earn gift cards/discounts by submitting a review: [www.novusbio.com/reviews/submit/NBP2-34717](http://www.novusbio.com/reviews/submit/NBP2-34717)

Earn gift cards/discounts by submitting a publication using this product:  
[www.novusbio.com/publications](http://www.novusbio.com/publications)

