

Product Datasheet

ErbB2/Her2 Antibody (HRB2/718) - Azide and BSA Free NBP2-34643-0.1mg

Unit Size: 0.1 mg

Store at -20 to -80C. Avoid freeze-thaw cycles.

www.novusbio.com



technical@novusbio.com

Protocols, Publications, Related Products, Reviews, Research Tools and Images at:
www.novusbio.com/NBP2-34643

Updated 7/16/2024 v.20.1

Earn rewards for product
reviews and publications.

Submit a publication at www.novusbio.com/publications

Submit a review at www.novusbio.com/reviews/destination/NBP2-34643



NBP2-34643-0.1mg

ErbB2/Her2 Antibody (HRB2/718) - Azide and BSA Free

Product Information	
Unit Size	0.1 mg
Concentration	1.0 mg/ml
Storage	Store at -20 to -80C. Avoid freeze-thaw cycles.
Clonality	Monoclonal
Clone	HRB2/718
Preservative	No Preservative
Isotype	IgG1 Kappa
Purity	Protein A or G purified
Buffer	10 mM PBS
Target Molecular Weight	185 kDa

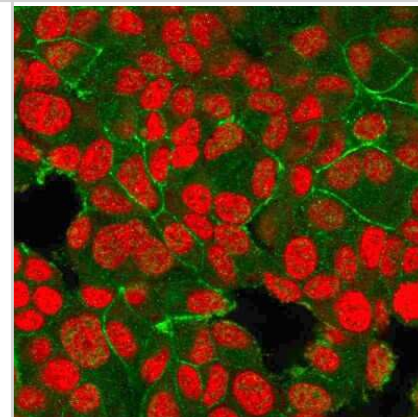
Product Description	
Description	1.0 mg/ml of antibody purified from Bioreactor Concentrate by Protein A/G. Prepared in 10mM PBS WITHOUT BSA & azide. Also available at 200 ug/ml WITH BSA & azide (NBP2-32864). Antibody with azide - store at 2 to 8C. Antibody without azide - store at -20 to -80C.
Host	Mouse
Gene ID	2064
Gene Symbol	ERBB2
Species	Human
Specificity/Sensitivity	Recognizes a protein of 185kDa, which is identified as c-erbB-2/HER-2/neu. Its epitope is localized in the extracellular domain. C-erbB-2/HER-2 is a member of the EGFR family. This monoclonal antibody is specific and shows minimal cross-reaction with other members of the EGFR-family. Receptors of this family are located on the plasma membrane and consist of an extracellular ligand-binding domain that is connected to a large intracellular domain by a single transmembrane sequence. c-erbB-2/HER-2 protein is over-expressed in a variety of carcinomas especially those of breast and ovary.
Immunogen	Recombinant extracellular domain of human ErbB2/Her2 protein (Uniprot: P04626)

Product Application Details	
Applications	ELISA, Flow Cytometry, Flow (Intracellular), Immunocytochemistry/Immunofluorescence, Protein Array, CyTOF-ready
Recommended Dilutions	Flow Cytometry 0.5-1ug/million cells, ELISA 1-5ug/ml for coating, Immunocytochemistry/ Immunofluorescence 0.5-1ug/ml, Protein Array, Flow (Intracellular), CyTOF-ready
Application Notes	ELISA: For coating, order antibody without BSA). Optimal dilution for a specific application should be determined.

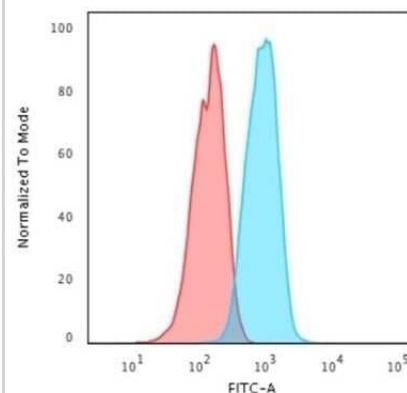


Images

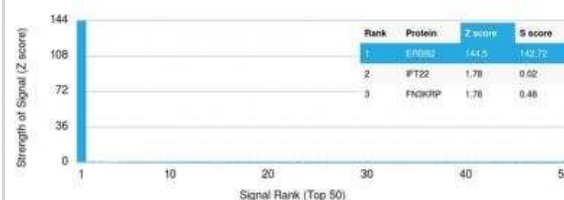
Immunocytochemistry/Immunofluorescence: ErbB2/Her2 Antibody (HRB2/718) - Azide and BSA Free [NBP2-34643] - Immunofluorescent staining of PFA-fixed MCF-7 cells with ErbB2/Her2 Monospecific Mouse Monoclonal Antibody (HRB2/718) followed by goat anti-Mouse IgG-CF488 (Green). Nuclei are stained with Reddot (Red).



Flow Cytometry: ErbB2/Her2 Antibody (HRB2/718) - Azide and BSA Free [NBP2-34643] - Flow Cytometric Analysis of human MCF-7 cells. ErbB2/Her2 Antibody (HRB2/718) followed by goat anti-Mouse IgG-CF488 (Blue); Isotype control (Red).



Protein Array: ErbB2/Her2 Antibody (HRB2/718) - Azide and BSA Free [NBP2-34643] - Analysis of Protein Array containing more than 19,000 full-length human proteins using ErbB2/Her2 Antibody (HRB2/718)





Novus Biologicals USA

10730 E. Briarwood Avenue
Centennial, CO 80112
USA
Phone: 303.730.1950
Toll Free: 1.888.506.6887
Fax: 303.730.1966
nb-customerservice@bio-techne.com

Bio-Techne Canada

21 Canmotor Ave
Toronto, ON M8Z 4E6
Canada
Phone: 905.827.6400
Toll Free: 855.668.8722
Fax: 905.827.6402
canada.inquires@bio-techne.com

Bio-Techne Ltd

19 Barton Lane
Abingdon Science Park
Abingdon, OX14 3NB, United Kingdom
Phone: (44) (0) 1235 529449
Free Phone: 0800 37 34 15
Fax: (44) (0) 1235 533420
info.EMEA@bio-techne.com

General Contact Information

www.novusbio.com
Technical Support: nb-technical@bio-techne.com
Orders: nb-customerservice@bio-techne.com
General: novus@novusbio.com

Products Related to NBP2-34643-0.1mg

HAF007	Goat anti-Mouse IgG Secondary Antibody [HRP]
NB720-B	Rabbit anti-Mouse IgG (H+L) Secondary Antibody [Biotin]
NBP1-43319-0.5mg	Mouse IgG1 Kappa Isotype Control (P3.6.2.8.1)
H00002064-P01-2ug	Recombinant Human ErbB2/Her2 GST (N-Term) Protein

Limitations

This product is for research use only and is not approved for use in humans or in clinical diagnosis. Primary Antibodies are guaranteed for 1 year from date of receipt.

For more information on our 100% guarantee, please visit www.novusbio.com/guarantee

Earn gift cards/discounts by submitting a review: www.novusbio.com/reviews/submit/NBP2-34643

Earn gift cards/discounts by submitting a publication using this product:
www.novusbio.com/publications

