

# Product Datasheet

## Fixation and Permeabilization Flow Cytometry Kit NBP2-31377-200ml

Unit Size: 200 mL (2 x 100 mL)

Store at room temperature.

[www.novusbio.com](http://www.novusbio.com)



[technical@novusbio.com](mailto:technical@novusbio.com)

Protocols, Publications, Related Products, Reviews, Research Tools and Images at:  
[www.novusbio.com/NBP2-31377](http://www.novusbio.com/NBP2-31377)

Updated 3/26/2025 v.20.1

Earn rewards for product  
reviews and publications.

Submit a publication at [www.novusbio.com/publications](http://www.novusbio.com/publications)

Submit a review at [www.novusbio.com/reviews/destination/NBP2-31377](http://www.novusbio.com/reviews/destination/NBP2-31377)



**NBP2-31377-200ml****Fixation and Permeabilization Flow Cytometry Kit**

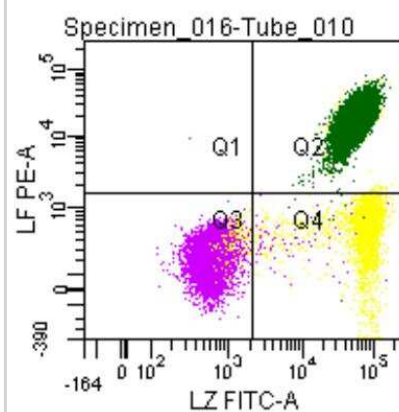
<b>Product Information</b>	
<b>Unit Size</b>	200 mL (2 x 100 mL)
<b>Concentration</b>	Concentration is not relevant for this product. Please see the protocols for proper use of this product.
<b>Storage</b>	Store at room temperature.

<b>Product Description</b>	
<b>Description</b>	Biological fluids (blood, bone marrow, and others) must be collected under sterile conditions. Anticoagulation with EDTA or heparin is recommended. The samples should be stored at room temperature until used. For optimal results, samples should be processed and analyzed within 24 hours. Samples with high numbers of non-viable cells might cause false results, such cases require determination of cell viability with e.g. propidium iodide. All biological samples have to be handled with caution. Always consider them as potentially infective. Use appropriate precautions such as gloves, lab-coat, etc.
<b>Kit Components</b>	Reagent A: Fixation Medium (1 x 5ml vial), Reagent B: Permeabilization Medium (1 x 5ml vial)

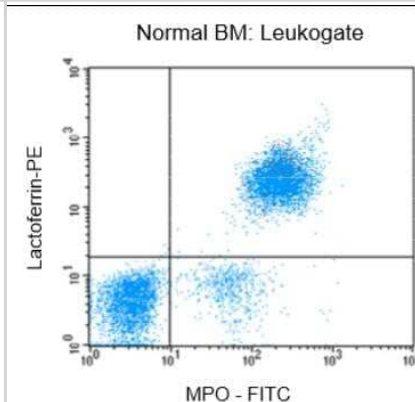
<b>Product Application Details</b>	
<b>Applications</b>	Flow Cytometry
<b>Recommended Dilutions</b>	Flow Cytometry
<b>Application Notes</b>	.

**Images**

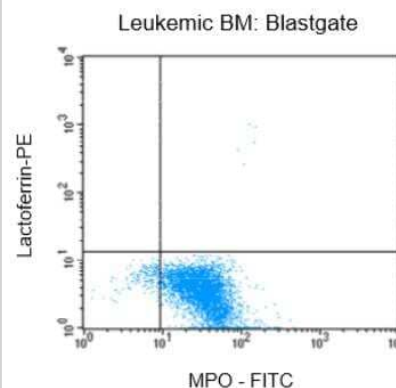
Flow Cytometry: Fixation and Permeabilization Flow Cytometry Kit [NBP2-31377] - Double labeling of a normal blood sample treated with NBP2-31377, and immunostained for Lactoferrin (PE) and Lysozyme (FITC).



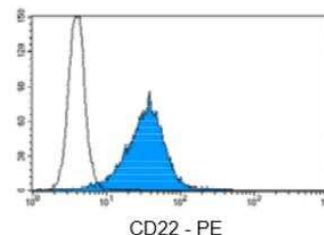
Flow Cytometry: Fixation and Permeabilization Flow Cytometry Kit [NBP2-31377] - Flow cytometric analysis of normal bone marrow (BM) after fixation and permeabilization using NBP2-31377, followed by immunostaining for lactoferrin and MPO-C2.



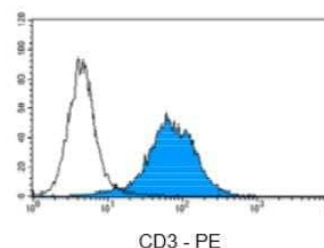
Flow Cytometry: Fixation and Permeabilization Flow Cytometry Kit [NBP2-31377] - Flow cytometric analysis of bone marrow (BM) from a leukemia patient after fixation and permeabilization using NBP2-31377, followed by immunostaining for lactoferrin and MPO-C2



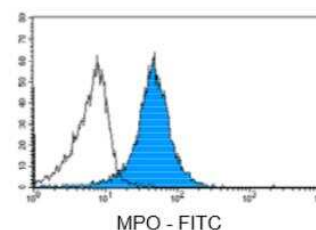
Flow Cytometry: Fixation and Permeabilization Flow Cytometry Kit [NBP2-31377] - Immunostaining with CD22-PE conjugate of undifferentiated leukemia cells of B-ALL type.



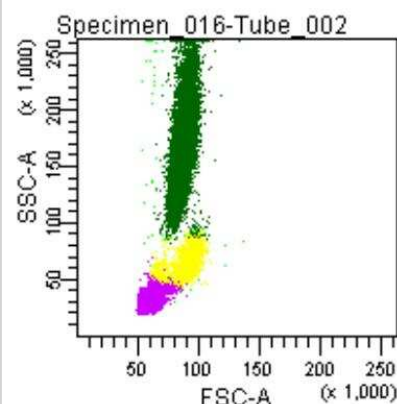
Flow Cytometry: Fixation and Permeabilization Flow Cytometry Kit [NBP2-31377] - Immunostaining with Nordic-MUBio CD3-PE conjugate of surface CD3-negative undifferentiated leukemia cells of T-ALL type.



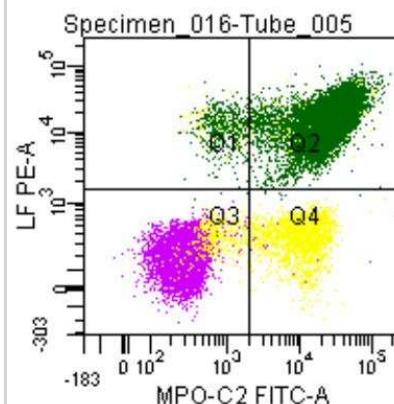
Flow Cytometry: Fixation and Permeabilization Flow Cytometry Kit [NBP2-31377] - Immunostaining with Nordic-MUBio anti MPO-FITC conjugate of undifferentiated leukemia cells of AML type.



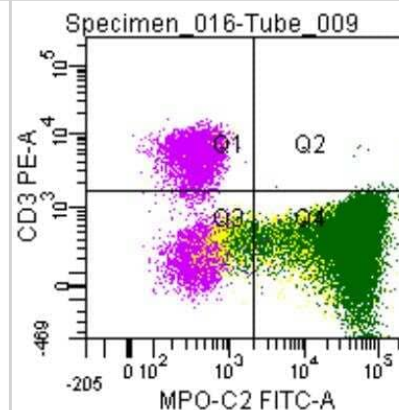
Flow Cytometry: Fixation and Permeabilization Flow Cytometry Kit [NBP2-31377] - Forward and side scatter pattern of a normal blood sample treated with NBP2-31377.



Flow Cytometry: Fixation and Permeabilization Flow Cytometry Kit [NBP2-31377] - Double labeling of a normal blood sample treated with NBP2-31377, and immunostained for Lactoferrin (PE) and MPO-C2 (FITC).



Flow Cytometry: Fixation and Permeabilization Flow Cytometry Kit [NBP2-31377] - Double labeling of a normal blood sample treated with NBP2-31377, and immunostained for CD3 (PE) and MPO-C2 (FITC).



## Procedures

### Product Handling Protocol (NBP2-31377)

#### Product Handling Protocol (NBP2-31377):

##### Background

Flow cytometric analyses with monoclonal antibodies were so far mainly restricted to cell surface molecules. Intracellular structures such as cytoplasmic or nuclear enzymes, oncoproteins, cytokines, immunoglobulins etc. were largely excluded from such studies. Also excluded from flow cytometric studies were cytoplasmic localizations of well-established membrane molecules like CD3 and CD22, which, in their cytoplasmic form, are the most reliable lineage markers in undifferentiated leukemia. With the Fixation and Permeabilization Flow Cytometry Kit, flow cytometric analysis of intracellular antigens has become as easy as surface antigen studies. The only prerequisite is the availability of suitable antibody conjugates. Most of the available monoclonal antibody conjugates can be used with the Fixation and Permeabilization Flow Cytometry Kit; some determinants are sensitive, however, to the fixation step involved. This and the optimal fixation time must be tested for each reagent.

##### Product

This Fixation and Permeabilization Flow Cytometry Kit contains 2 reagents: Fixation Medium (Reagent A) and Permeabilization Medium (Reagent B). It is intended for first fixing cells in suspension with Reagent A and then permeabilizing the cell membranes with Reagent B. This procedure gives antibodies access to intracellular structures and leaves the morphological scatter characteristics of cells intact. Specific formulations reduce background staining and allow simultaneous addition of permeabilization medium and fluorochrome labeled antibodies. The kit is suitable for the analysis of normal and malignant leukocyte populations derived from various human biological samples (blood, bone marrow and others) using flow cytometry. Results must be put within the context of other diagnostic tests as well as the clinical history of the patient by a certified professional before final interpretation.

Format: 1 x 5ml vial of Fixation Medium (Reagent A) and 1 x 5ml vial Permeabilization Medium (Reagent B). Fixation and Permeabilization Flow Cytometry Kit Reagents are designed for use with all commercially available flow cytometers. Alignment and compensation should be performed according to manufacturer's instructions.

The quality of each kit lot is determined by fixation and permeabilization of well-defined blood samples from representative donors and subsequent comparison of forward and side scatter characteristics of obtained leukocytes, as well as immunostaining efficiency for several membranous and cytoplasmic antigens

##### Applications

Biological fluids (blood, bone marrow, and others) must be collected under sterile conditions. Anticoagulation with EDTA or heparin is recommended. The samples should be stored at room temperature until used. For optimal results, samples should be processed and analyzed within 24 hours. Samples with high numbers of non-viable cells might cause false results, such cases require determination of cell viability with e.g. propidium iodide. All biological samples must be handled with caution. Always consider them as potentially infective. Use appropriate precautions such as gloves, lab-coat, etc.

##### Fixation, permeabilization and staining procedure:

1. For each sample to be analyzed add 50 ul of whole blood, bone marrow or mononuclear cell suspension in a 5ml tube
2. Add 100 ul of Reagent A (Fixation Medium, stored and used at room temperature)
3. Incubate for 15 minutes at room temperature
4. Add 5ml phosphate buffered saline and centrifuge cells for 5 minutes at 300 g
5. Remove supernatant and add to cell pellet 100 ul Reagent B (Permeabilization Medium) and 20 ul of the appropriate monoclonal antibody conjugate
6. Vortex at low speed for 1-2 seconds
7. Incubate for 15 minutes at room temperature
8. Wash cells with phosphate buffered saline as described above
9. Remove supernatant and resuspend cells in sheath fluid for immediate analysis or resuspend cells in 0.5 ml 1.0 % formaldehyde and store them at 2-8 degrees C in the dark. Analyze fixed cells within 24 hours.

Comments: Special cases (diluted bone marrow samples, other samples containing low soluble protein) might benefit from replenishment with plasma components before the Fixation and Permeabilization Flow Cytometry Kit treatment

in order to create a milieu, which more closely resembles the situation in anti-coagulated blood. For that purpose, addition of IgG preparations (e.g. Beriglobulin P, ZLB Behring, final concentration 10mg/ml) and human serum albumin (e.g. human albumin "Behring" 20% - infusion solution, final concentration 40mg/ml) is recommended.

#### Limitations of the technique

Flow cytometry should be performed by professional users only. Improper alignment of the flow cytometer, inaccurate compensation of fluorescence leaking into other channels as well as incorrect positioning of regions may lead to false results.

Lysis of red cells might be impossible for various reasons. In such instances it is recommended to isolate mononuclear cells (MNC) via density gradient centrifugation prior to staining.

Results will be correct and reproducible as long as the procedures used respect the technical recommendations and obey good laboratory practice.

The Fixation and Permeabilization Flow Cytometry Kit solutions are provided in a concentration that will allow to fix and permeabilize human hematopoietic cells. It is therefore strongly recommended to stick to the working protocol in terms of concentration and volume regarding cells and antibody. The properties of the Fixation and Permeabilization Flow Cytometry Kit have been determined using EDTA anti-coagulated peripheral blood.

#### Warranty

The products sold hereunder are warranted only to conform to the quantity and contents stated on the label at the time of delivery to the customer. There are no warranties, expressed or implied, that extend beyond the description on the label of the product. Novus Biologicals' sole liability is limited to either replacement of the products or refund of the purchase price. Novus Biologicals is not liable for property damage, personal injury, or economic loss caused by the product.

#### Storage

Fixation and Permeabilization Flow Cytometry Kit reagents should be stored and used at room temperature. DO NOT FREEZE.

Stability of the reagent: Please refer to the expiry date printed onto the vial. The use of the reagent after the expiration date is not recommended. If reagents are stored under any conditions other than those specified, the conditions must be verified by the user. Do not use reagents if a precipitate should form or discoloration occurs. If unexpected results are obtained which cannot be attributed to differences in laboratory procedures, please contact us.



### **Novus Biologicals USA**

10730 E. Briarwood Avenue  
Centennial, CO 80112  
USA  
Phone: 303.730.1950  
Toll Free: 1.888.506.6887  
Fax: 303.730.1966  
nb-customerservice@bio-techne.com

### **Bio-Techne Canada**

21 Canmotor Ave  
Toronto, ON M8Z 4E6  
Canada  
Phone: 905.827.6400  
Toll Free: 855.668.8722  
Fax: 905.827.6402  
canada.inquires@bio-techne.com

### **Bio-Techne Ltd**

19 Barton Lane  
Abingdon Science Park  
Abingdon, OX14 3NB, United Kingdom  
Phone: (44) (0) 1235 529449  
Free Phone: 0800 37 34 15  
Fax: (44) (0) 1235 533420  
info.EMEA@bio-techne.com

### **General Contact Information**

[www.novusbio.com](http://www.novusbio.com)  
Technical Support: nb-technical@bio-techne.com  
Orders: nb-customerservice@bio-techne.com  
General: novus@novusbio.com

### **Limitations**

This product is for research use only and is not approved for use in humans or in clinical diagnosis. Kits are guaranteed for 6 months from date of receipt.

For more information on our 100% guarantee, please visit [www.novusbio.com/guarantee](http://www.novusbio.com/guarantee)

Earn gift cards/discounts by submitting a review: [www.novusbio.com/reviews/submit/NBP2-31377](http://www.novusbio.com/reviews/submit/NBP2-31377)

Earn gift cards/discounts by submitting a publication using this product:  
[www.novusbio.com/publications](http://www.novusbio.com/publications)

