

# Product Datasheet

## Integrin beta 2/CD18 Antibody (2E6) - Azide and BSA Free NBP2-22433-100 ug

Unit Size: 100 ug

Store at -20C. Avoid freeze-thaw cycles.

[www.novusbio.com](http://www.novusbio.com)



[technical@novusbio.com](mailto:technical@novusbio.com)

### Publications: 1

Protocols, Publications, Related Products, Reviews, Research Tools and Images at:  
[www.novusbio.com/NBP2-22433](http://www.novusbio.com/NBP2-22433)

Updated 4/3/2022 v.20.1

Earn rewards for product  
reviews and publications.

Submit a publication at [www.novusbio.com/publications](http://www.novusbio.com/publications)

Submit a review at [www.novusbio.com/reviews/destination/NBP2-22433](http://www.novusbio.com/reviews/destination/NBP2-22433)



**NBP2-22433-100 ug**

Integrin beta 2/CD18 Antibody (2E6) - Azide and BSA Free

**Product Information**

<b>Unit Size</b>	100 ug
<b>Concentration</b>	1.04 mg/ml
<b>Storage</b>	Store at -20C. Avoid freeze-thaw cycles.
<b>Clonality</b>	Monoclonal
<b>Clone</b>	2E6
<b>Preservative</b>	No Preservative
<b>Isotype</b>	IgG
<b>Purity</b>	Protein G purified
<b>Buffer</b>	PBS

**Product Description**

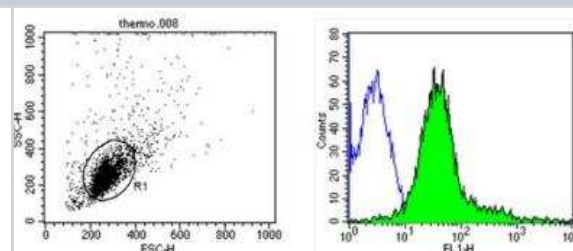
<b>Host</b>	Hamster
<b>Gene ID</b>	3689
<b>Gene Symbol</b>	ITGB2
<b>Species</b>	Mouse
<b>Immunogen</b>	CD18
<b>Endotoxin Note</b>	Low endotoxin

**Product Application Details**

<b>Applications</b>	Western Blot, Flow Cytometry, Immunoprecipitation, CyTOF-ready, Inhibition Activity
<b>Recommended Dilutions</b>	Western Blot 1:100-1:2000, Flow Cytometry 1:10 - 1:1000, Immunoprecipitation 1:10 - 1:500, Inhibition Activity, CyTOF-ready

**Images**

Flow Cytometry: Integrin beta 2/CD18 Antibody (2E6) [NBP2-22433] - Analysis mouse splenocytes (green) compared to an isotype control (blue).

**Publications**

Qi C, Wei B, Zhou W et al. P-selectin-mediated platelet adhesion promotes tumor growth. Oncotarget. 2015-02-09 [PMID: 25762641] (IP)



### **Novus Biologicals USA**

10730 E. Briarwood Avenue  
Centennial, CO 80112  
USA  
Phone: 303.730.1950  
Toll Free: 1.888.506.6887  
Fax: 303.730.1966  
nb-customerservice@bio-techne.com

### **Bio-Techne Canada**

21 Canmotor Ave  
Toronto, ON M8Z 4E6  
Canada  
Phone: 905.827.6400  
Toll Free: 855.668.8722  
Fax: 905.827.6402  
canada.inquires@bio-techne.com

### **Bio-Techne Ltd**

19 Barton Lane  
Abingdon Science Park  
Abingdon, OX14 3NB, United Kingdom  
Phone: (44) (0) 1235 529449  
Free Phone: 0800 37 34 15  
Fax: (44) (0) 1235 533420  
info.EMEA@bio-techne.com

### **General Contact Information**

[www.novusbio.com](http://www.novusbio.com)  
Technical Support: nb-technical@bio-techne.com  
Orders: nb-customerservice@bio-techne.com  
General: novus@novusbio.com

### **Limitations**

This product is for research use only and is not approved for use in humans or in clinical diagnosis. Primary Antibodies are guaranteed for 1 year from date of receipt.

For more information on our 100% guarantee, please visit [www.novusbio.com/guarantee](http://www.novusbio.com/guarantee)

Earn gift cards/discounts by submitting a review: [www.novusbio.com/reviews/submit/NBP2-22433](http://www.novusbio.com/reviews/submit/NBP2-22433)

Earn gift cards/discounts by submitting a publication using this product:  
[www.novusbio.com/publications](http://www.novusbio.com/publications)

