

# Product Datasheet

## Lactoferrin Native Protein

### NBP2-12557-100ug

Unit Size: 100 ug

Store at -20 to -80C. Avoid freeze-thaw cycles.

[www.novusbio.com](http://www.novusbio.com)



[technical@novusbio.com](mailto:technical@novusbio.com)

Protocols, Publications, Related Products, Reviews, Research Tools and Images at:  
[www.novusbio.com/NBP2-12557](http://www.novusbio.com/NBP2-12557)

Updated 4/29/2024 v.20.1

Earn rewards for product  
reviews and publications.

Submit a publication at [www.novusbio.com/publications](http://www.novusbio.com/publications)

Submit a review at [www.novusbio.com/reviews/destination/NBP2-12557](http://www.novusbio.com/reviews/destination/NBP2-12557)



**NBP2-12557-100ug****Lactoferrin Native Protein****Product Information**

<b>Unit Size</b>	100 ug
<b>Concentration</b>	Please see the vial label for concentration. If unlisted please contact technical services.
<b>Storage</b>	Store at -20 to -80C. Avoid freeze-thaw cycles.
<b>Purity</b>	>95%, by SDS-PAGE
<b>Buffer</b>	100 mM Tris-HCl (pH 8.0), 300 mM NaCl
<b>Target Molecular Weight</b>	78 kDa

**Product Description**

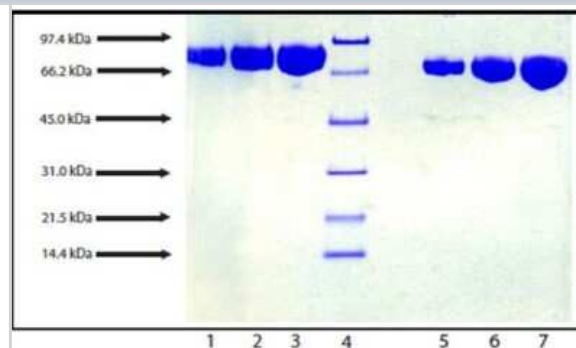
<b>Description</b>	<p>Native Lactoferrin</p> <p>Source: <i>Human neutrophil</i> Amino Acid Sequence: (P02788)</p> <p><i>This product is manufactured by Abcam and distributed by Novus Biologicals. (Abcam Catalog Number: ab90354)</i></p>
<b>Gene ID</b>	4057
<b>Gene Symbol</b>	LTF
<b>Species</b>	Human

**Product Application Details**

<b>Applications</b>	Western Blot, SDS-Page
<b>Recommended Dilutions</b>	Western Blot, SDS-Page

**Images**

Western Blot: Lactoferrin Native Protein [NBP2-12557] - SDS-PAGE: 4-12% Bis-Tris NuPage gel. Lane 1. Lactoferrin - 5 ug (reduced / heated), Lane 2. Lactoferrin - 10 ug (reduced / heated), Lane 3. Lactoferrin - 20 ug (reduced / heated), Lane 4. LMW Standard, Lane 5. Lactoferrin - 5 ug (non-reduced / no heat), Lane 6. Lactoferrin - 10 ug (non-reduced / no heat), Lane 7. Lactoferrin - 20 ug (non-reduced / no heat).





### **Novus Biologicals USA**

10730 E. Briarwood Avenue  
Centennial, CO 80112  
USA  
Phone: 303.730.1950  
Toll Free: 1.888.506.6887  
Fax: 303.730.1966  
nb-customerservice@bio-techne.com

### **Bio-Techne Canada**

21 Canmotor Ave  
Toronto, ON M8Z 4E6  
Canada  
Phone: 905.827.6400  
Toll Free: 855.668.8722  
Fax: 905.827.6402  
canada.inquires@bio-techne.com

### **Bio-Techne Ltd**

19 Barton Lane  
Abingdon Science Park  
Abingdon, OX14 3NB, United Kingdom  
Phone: (44) (0) 1235 529449  
Free Phone: 0800 37 34 15  
Fax: (44) (0) 1235 533420  
info.EMEA@bio-techne.com

### **General Contact Information**

[www.novusbio.com](http://www.novusbio.com)  
Technical Support: nb-technical@bio-techne.com  
Orders: nb-customerservice@bio-techne.com  
General: novus@novusbio.com

### **Limitations**

This product is for research use only and is not approved for use in humans or in clinical diagnosis. Peptides and proteins are guaranteed for 3 months from date of receipt.

For more information on our 100% guarantee, please visit [www.novusbio.com/guarantee](http://www.novusbio.com/guarantee)

Earn gift cards/discounts by submitting a review: [www.novusbio.com/reviews/submit/NBP2-12557](http://www.novusbio.com/reviews/submit/NBP2-12557)

Earn gift cards/discounts by submitting a publication using this product:  
[www.novusbio.com/publications](http://www.novusbio.com/publications)

