

Product Datasheet

Recombinant Human Cathepsin L Protein NBP1-99623-100ug

Unit Size: 100 ug

Store at -80C. Avoid freeze-thaw cycles.

www.novusbio.com



technical@novusbio.com

Protocols, Publications, Related Products, Reviews, Research Tools and Images at:
www.novusbio.com/NBP1-99623

Updated 10/3/2023 v.20.1

Earn rewards for product
reviews and publications.

Submit a publication at www.novusbio.com/publications

Submit a review at www.novusbio.com/reviews/destination/NBP1-99623

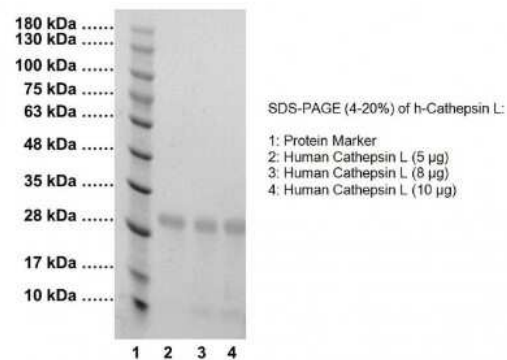


NBP1-99623-100ug**Recombinant Human Cathepsin L Protein**

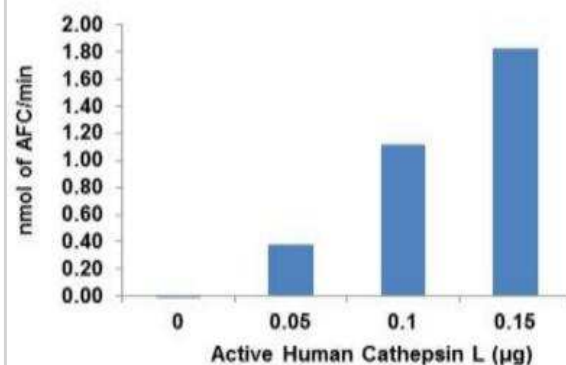
Product Information	
Unit Size	100 ug
Concentration	0.5 mg/ml
Storage	Store at -80C. Avoid freeze-thaw cycles.
Preservative	No Preservative
Purity	>90%, by SDS-PAGE
Buffer	25 mM Sodium Acetate (pH 5.5), 50 mM NaCl, 50% glycerol
Target Molecular Weight	24.2 kDa
Product Description	
Description	<p>Recombinant bioactive protein for aa114-333 of Human Cathepsin L with N-terminal His tag. Molecular weight 24.2kDa.</p> <p>Store at -80C, stable for at least 6 months as supplied. Use as provided or dilute with 50% glycerol to 0.1 mg/ml. Aliquot immediately and store at -80C. Avoid freeze/thaw cycles.</p> <p>This product is manufactured by Abcam and distributed by Novus Biologicals. (Abcam Catalog Number: ab81780)</p>
Gene ID	1514
Gene Symbol	CTSL
Species	Human
Details of Functionality	Recombinant Human Cathepsin L Protein has been activated through auto-catalytic activation of Procathepsin L at low pH. The enzyme is fully active as seen from its ability to cleave a fluorogenic substrate Z-Phe-Arg-AFC (NBP2-54843).
Product Application Details	
Applications	SDS-Page, Bioactivity
Recommended Dilutions	SDS-Page, Bioactivity
Application Notes	<p>Specific activity:> 2,000 mU/mg (1 U = digestion of 1 umole of Z-Phe-Arg-AFC substrate (K142-100) per minute at 37C in 50 mM Sodium Acetate, 100 mM NaCl, pH 5.5).</p> <p>This product is useful in inhibitor screening, kinetic studies and cleavage of substrates in vitro or in tissue culture.</p>

Images

SDS-Page: Recombinant Human Cathepsin L Protein [NBP1-99623]



Recombinant Human Cathepsin L Protein [NBP1-99623] - Measurement of Recombinant Human Cathepsin L Protein activity by Cathepsin L Assay Kit (Fluorometric) (NBP2-54843)





Novus Biologicals USA

10730 E. Briarwood Avenue
Centennial, CO 80112
USA

Phone: 303.730.1950
Toll Free: 1.888.506.6887
Fax: 303.730.1966
novus@novusbio.com

Bio-Techne Canada

21 Canmotor Ave
Toronto, ON M8Z 4E6
Canada

Phone: 905.827.6400
Toll Free: 855.668.8722
Fax: 905.827.6402
canada.inquires@bio-techne.com

Bio-Techne Ltd

19 Barton Lane
Abingdon Science Park
Abingdon, OX14 3NB, United Kingdom
Phone: (44) (0) 1235 529449
Free Phone: 0800 37 34 15
Fax: (44) (0) 1235 533420
info.EMEA@bio-techne.com

General Contact Information

www.novusbio.com
Technical Support: technical@novusbio.com
Orders: orders@novusbio.com
General: novus@novusbio.com

Limitations

This product is for research use only and is not approved for use in humans or in clinical diagnosis. This product is guaranteed for 1 year from date of receipt.

For more information on our 100% guarantee, please visit www.novusbio.com/guarantee

Earn gift cards/discounts by submitting a review: www.novusbio.com/reviews/submit/NBP1-99623

Earn gift cards/discounts by submitting a publication using this product:
www.novusbio.com/publications

