

# Product Datasheet

## Goat anti-Rabbit IgG (H+L) Secondary Antibody [HRP] (Pre-adsorbed) NBP1-75325-1000ug

Unit Size: 1000 ug

Store lyophilized antibody at 4C. Mix reconstituted liquid with an equal volume of glycerol, aliquot contents and freeze at -20C or below for long term storage.

[www.novusbio.com](http://www.novusbio.com)



[technical@novusbio.com](mailto:technical@novusbio.com)

Reviews: 1 Publications: 2

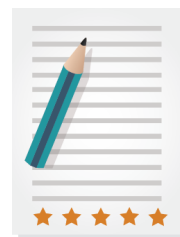
Protocols, Publications, Related Products, Reviews, Research Tools and Images at:  
[www.novusbio.com/NBP1-75325](http://www.novusbio.com/NBP1-75325)

Updated 6/22/2025 v.20.1

Earn rewards for product  
reviews and publications.

Submit a publication at [www.novusbio.com/publications](http://www.novusbio.com/publications)

Submit a review at [www.novusbio.com/reviews/destination/NBP1-75325](http://www.novusbio.com/reviews/destination/NBP1-75325)



**NBP1-75325-1000ug**

Goat anti-Rabbit IgG (H+L) Secondary Antibody [HRP] (Pre-adsorbed)

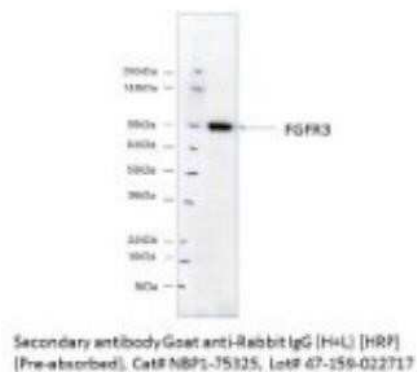
<b>Product Information</b>	
<b>Unit Size</b>	1000 ug
<b>Concentration</b>	LYOPH mg/ml
<b>Storage</b>	Store lyophilized antibody at 4C. Mix reconstituted liquid with an equal volume of glycerol, aliquot contents and freeze at -20C or below for long term storage.
<b>Clonality</b>	Polyclonal
<b>Preservative</b>	0.1% ProClin 150
<b>Reconstitution Instructions</b>	Rehydrate with 1.1 ml of deionized water and let stand 30 minutes at room temperature to dissolve. (Product has been overfilled to ensure complete recovery.) Centrifuge to remove any particulates. Prepare fresh working dilution daily.
<b>Isotype</b>	IgG
<b>Conjugate</b>	HRP
<b>Purity</b>	Affinity purified
<b>Buffer</b>	10 mM Sodium Phosphate, 0.15 M Sodium Chloride, pH 7.2, 1 % (w/v) BSA, Protease/IgG free

<b>Product Description</b>	
<b>Description</b>	Purity > 95% based on SDS-PAGE. Goat serum was obtained from healthy animals of US origin and under the care of a registered veterinarian. After reconstituted, prepare fresh working dilution daily.  Store lyophilized material at 2-8C. For long term storage after reconstitution, dilute with 50% glycerol and store at -20C as a liquid.
<b>Host</b>	Goat
<b>Species</b>	Rabbit
<b>Reactivity Notes</b>	Based on IEP, no reactivity is observed to non-immunoglobulin rabbit serum proteins, serum proteins from bovine, goat, human, mouse, or rat, and IgG from bovine, goat, human, mouse or rat
<b>Specificity/Sensitivity</b>	Based on IEP, this Goat anti-Rabbit IgG (H+L) Secondary Antibody [HRP] (Pre-adsorbed) heavy gamma chains on rabbit IgG and light chains on all rabbit immunoglobulins. This antibody has been pre-adsorbed against bovine, goat, human, mouse or rat IgG or serum
<b>Immunogen</b>	This Goat anti-Rabbit IgG (H+L) Secondary Antibody [HRP] (Pre-adsorbed) was developed against purified rabbit IgG (H&L).

<b>Product Application Details</b>	
<b>Applications</b>	Western Blot, Immunohistochemistry-Paraffin, ELISA, Immunohistochemistry
<b>Recommended Dilutions</b>	Western Blot 1:200-1:5000, ELISA 1:200-1:5000, Immunohistochemistry, Immunohistochemistry-Paraffin 1:500-1:5000

## Images

Western Blot: Goat anti-Rabbit IgG (H+L) Secondary Antibody [HRP] (Pre-adsorbed) [NBP1-75325] - Total cell lysate from human UMUC1 using Goat anti-Rabbit IgG (H+L) Secondary Antibody [HRP] (Pre-adsorbed). This image was submitted via customer Review.



## Publications

Ramesh G, Das S, Bola Sadashiva SR Berberine, a natural alkaloid sensitizes human hepatocarcinoma to ionizing radiation by blocking autophagy and cell cycle arrest resulting in senescence 2020-08-20 [PMID: 32815562]

Details:

Citation using the HRP format of this antibody.

Perlenfein TJ, Murphy RM. A mechanistic model to predict effects of cathepsin B and cystatin C on beta-amyloid aggregation and degradation J Biol Chem 2017-10-20 [PMID: 29046353] (WB)



### **Novus Biologicals USA**

10730 E. Briarwood Avenue  
Centennial, CO 80112  
USA  
Phone: 303.730.1950  
Toll Free: 1.888.506.6887  
Fax: 303.730.1966  
nb-customerservice@bio-techne.com

### **Bio-Techne Canada**

21 Canmotor Ave  
Toronto, ON M8Z 4E6  
Canada  
Phone: 905.827.6400  
Toll Free: 855.668.8722  
Fax: 905.827.6402  
canada.inquires@bio-techne.com

### **Bio-Techne Ltd**

19 Barton Lane  
Abingdon Science Park  
Abingdon, OX14 3NB, United Kingdom  
Phone: (44) (0) 1235 529449  
Free Phone: 0800 37 34 15  
Fax: (44) (0) 1235 533420  
info.EMEA@bio-techne.com

### **General Contact Information**

www.novusbio.com  
Technical Support: nb-technical@bio-techne.com  
Orders: nb-customerservice@bio-techne.com  
General: novus@novusbio.com

### **Limitations**

This product is for research use only and is not approved for use in humans or in clinical diagnosis. Secondary Antibodies are guaranteed for 1 year from date of receipt.

For more information on our 100% guarantee, please visit [www.novusbio.com/guarantee](http://www.novusbio.com/guarantee)

Earn gift cards/discounts by submitting a review: [www.novusbio.com/reviews/submit/NBP1-75325](http://www.novusbio.com/reviews/submit/NBP1-75325)

Earn gift cards/discounts by submitting a publication using this product:  
[www.novusbio.com/publications](http://www.novusbio.com/publications)

