

Product Datasheet

TCL1A Antibody (1-21) - BSA Free NBP1-43253-25ug

Unit Size: 25 ug

Store at 4C. Do not freeze.

www.novusbio.com



technical@novusbio.com

Reviews: 1

Protocols, Publications, Related Products, Reviews, Research Tools and Images at:
www.novusbio.com/NBP1-43253

Updated 10/19/2023 v.20.1

Earn rewards for product
reviews and publications.

Submit a publication at www.novusbio.com/publications

Submit a review at www.novusbio.com/reviews/destination/NBP1-43253



NBP1-43253-25ug

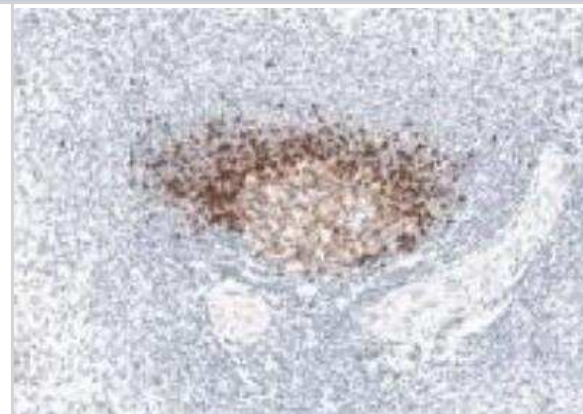
TCL1A Antibody (1-21) - BSA Free

Product Information	
Unit Size	25 ug
Concentration	0.5 mg/ml
Storage	Store at 4C. Do not freeze.
Clonality	Monoclonal
Clone	1-21
Preservative	0.09% Sodium Azide
Isotype	IgG2b Kappa
Purity	Protein A or G purified
Buffer	PBS (pH 7.2)
Product Description	
Host	Mouse
Gene ID	8115
Gene Symbol	TCL1A
Species	Human
Immunogen	The immunogen for this antibody was TCL1.
Product Application Details	
Applications	Western Blot, Flow Cytometry, Immunohistochemistry, Immunohistochemistry-Paraffin, Immunoprecipitation
Recommended Dilutions	Western Blot 1:100-1:2000, Flow Cytometry 1:10-1:1000, Immunohistochemistry 1:10-1:500, Immunoprecipitation 1:10-1:500, Immunohistochemistry-Paraffin 1:10-1:500
Application Notes	This 1-21 antibody has been tested by western blot analysis of Daudi cell lysates and intracellular staining followed by flow cytometric analysis of Daudi cells. For flow cytometry, this antibody can be used at less than or equal to 0.5 ug per test. Cell number should be determined empirically but can range from 10 ⁵ to 10 ⁸ cells/test.

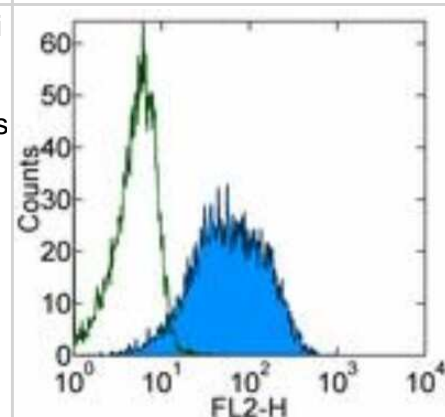


Images

Immunohistochemistry-Paraffin: TCL1A Antibody (1-21) [NBP1-43253] - Human spleen tissue stained with TCL1A Antibody (1-21). IHC-P image submitted by a verified customer review.



Flow Cytometry: TCL1 Antibody (1-21) [NBP1-43253] - Staining of Daudi cells with 0.25 ug of Mouse IgG2b kappa Isotype Control Purified (open histogram) or 0.25 ug of Anti-Human TCL1 Purified (filled histogram) followed by Anti-Mouse IgG Biotin and Streptavidin PE . Total viable cells were used for analysis





Novus Biologicals USA

10730 E. Briarwood Avenue
Centennial, CO 80112
USA
Phone: 303.730.1950
Toll Free: 1.888.506.6887
Fax: 303.730.1966
nb-customerservice@bio-techne.com

Bio-Techne Canada

21 Canmotor Ave
Toronto, ON M8Z 4E6
Canada
Phone: 905.827.6400
Toll Free: 855.668.8722
Fax: 905.827.6402
canada.inquires@bio-techne.com

Bio-Techne Ltd

19 Barton Lane
Abingdon Science Park
Abingdon, OX14 3NB, United Kingdom
Phone: (44) (0) 1235 529449
Free Phone: 0800 37 34 15
Fax: (44) (0) 1235 533420
info.EMEA@bio-techne.com

General Contact Information

www.novusbio.com
Technical Support: nb-technical@bio-
techne.com
Orders: nb-customerservice@bio-techne.com
General: novus@novusbio.com

Limitations

This product is for research use only and is not approved for use in humans or in clinical diagnosis.
Primary Antibodies are guaranteed for 1 year from date of receipt.

For more information on our 100% guarantee, please visit www.novusbio.com/guarantee

Earn gift cards/discounts by submitting a review: www.novusbio.com/reviews/submit/NBP1-43253

Earn gift cards/discounts by submitting a publication using this product:
www.novusbio.com/publications

