

Product Datasheet

Lysine (K)-specific Demethylase 6B/KDM6B/JMJD3 Antibody [mFluor Violet 450 SE] NBP1-06640MFV450

Unit Size: 0.1 ml

Store at 4C in the dark.

www.novusbio.com



technical@novusbio.com

Protocols, Publications, Related Products, Reviews, Research Tools and Images at:
www.novusbio.com/NBP1-06640MFV450

Updated 9/20/2023 v.20.1

Earn rewards for product
reviews and publications.

Submit a publication at www.novusbio.com/publications

Submit a review at www.novusbio.com/reviews/destination/NBP1-06640MFV450



NBP1-06640MFV450

Lysine (K)-specific Demethylase 6B/KDM6B/JMJD3 Antibody [mFluor Violet 450 SE]

Product Information

Unit Size	0.1 ml
Concentration	Please see the vial label for concentration. If unlisted please contact technical services.
Storage	Store at 4C in the dark.
Clonality	Polyclonal
Preservative	0.05% Sodium Azide
Isotype	IgG
Conjugate	mFluor Violet 450 SE
Purity	Immunogen affinity purified
Buffer	50mM Sodium Borate

Product Description

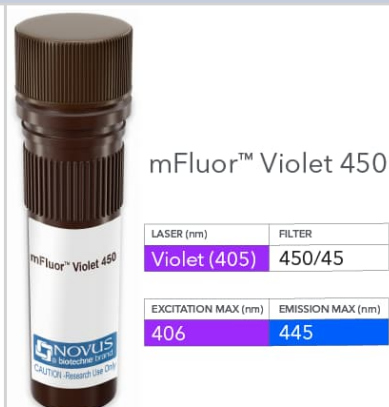
Host	Rabbit
Gene ID	23135
Gene Symbol	KDM6B
Species	Human, Mouse
Immunogen	Synthetic peptide made to an internal portion of the mouse JMJD3 protein (within residues 600-650). [Swiss-Prot# Q5NCY0]
Notes	mFluor(TM) is a trademark of AAT Bioquest, Inc. This conjugate is made on demand. Actual recovery may vary from the stated volume of this product. The volume will be greater than or equal to the unit size stated on the datasheet.

Product Application Details

Applications	Western Blot, Flow Cytometry, Immunocytochemistry/Immunofluorescence, Immunohistochemistry
Recommended Dilutions	Western Blot, Flow Cytometry, Immunohistochemistry, Immunocytochemistry/Immunofluorescence
Application Notes	Optimal dilution of this antibody should be experimentally determined.

Images

Lysine (K)-specific Demethylase 6B/KDM6B/JMJD3 Antibody [mFluor Violet 450 SE] [NBP1-06640MFV450] - Vial of mFluor Violet 450 conjugated antibody. mFluor Violet 450 is optimally excited at 406 nm by the Violet laser (405 nm) and has an emission maximum of 445 nm.





Novus Biologicals USA

10730 E. Briarwood Avenue
Centennial, CO 80112
USA
Phone: 303.730.1950
Toll Free: 1.888.506.6887
Fax: 303.730.1966
nb-customerservice@bio-techne.com

Bio-Techne Canada

21 Canmotor Ave
Toronto, ON M8Z 4E6
Canada
Phone: 905.827.6400
Toll Free: 855.668.8722
Fax: 905.827.6402
canada.inquires@bio-techne.com

Bio-Techne Ltd

19 Barton Lane
Abingdon Science Park
Abingdon, OX14 3NB, United Kingdom
Phone: (44) (0) 1235 529449
Free Phone: 0800 37 34 15
Fax: (44) (0) 1235 533420
info.EMEA@bio-techne.com

General Contact Information

www.novusbio.com
Technical Support: nb-technical@bio-techne.com
Orders: nb-customerservice@bio-techne.com
General: novus@novusbio.com

Products Related to NBP1-06640MFV450

NBP1-06640PEP	Lysine (K)-specific Demethylase 6B/KDM6B/JMJD3 Antibody Blocking Peptide
210-TA-005	TNF-alpha [Unconjugated]
NB200-106	p19ARF/CDKN2A Antibody - BSA Free
NB200-103	p53 Antibody (PAb 240) - BSA Free

Limitations

This product is for research use only and is not approved for use in humans or in clinical diagnosis. Primary Antibodies are guaranteed for 1 year from date of receipt.

For more information on our 100% guarantee, please visit www.novusbio.com/guarantee

Earn gift cards/discounts by submitting a review: www.novusbio.com/reviews/submit/NBP1-06640MFV450

Earn gift cards/discounts by submitting a publication using this product:
www.novusbio.com/publications



