

Product Datasheet

alpha Adaptin Antibody (AP6) - BSA Free NB600-1545-0.025 ml

Unit Size: 0.025 ml

Store at -20C. Avoid freeze-thaw cycles.

www.novusbio.com



technical@novusbio.com

Protocols, Publications, Related Products, Reviews, Research Tools and Images at:
www.novusbio.com/NB600-1545

Updated 10/23/2024 v.20.1

Earn rewards for product
reviews and publications.

Submit a publication at www.novusbio.com/publications

Submit a review at www.novusbio.com/reviews/destination/NB600-1545



NB600-1545-0.025 ml

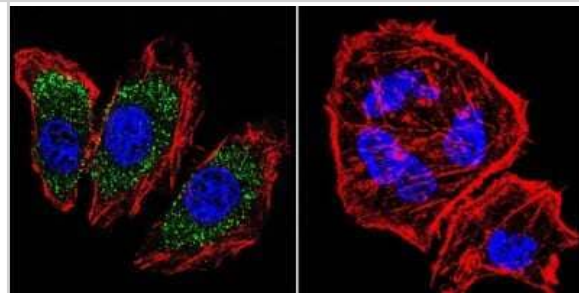
alpha Adaptin Antibody (AP6) - BSA Free

Product Information	
Unit Size	0.025 ml
Concentration	1 mg/ml
Storage	Store at -20C. Avoid freeze-thaw cycles.
Clonality	Monoclonal
Clone	AP6
Preservative	0.05% Sodium Azide
Isotype	IgG1
Purity	Immunogen affinity purified
Buffer	PBS
Product Description	
Host	Mouse
Gene ID	160
Gene Symbol	AP2A1
Species	Human, Mouse, Rat, Bovine, Hamster, Primate
Reactivity Notes	Hamster reactivity reported in scientific literature (PMID: 15923653). Please note that this antibody is reactive to Mouse and derived from the same host, Mouse. Additional Mouse on Mouse blocking steps may be required for IHC and ICC experiments. Please contact Technical Support for more information.
Specificity/Sensitivity	Detects assembly polypeptide 2 (AP2) It recognizes the products of both alpha-adaptin genes, alpha A and alpha C as well as an alternatively spliced isoform of alpha A found in neurons.
Immunogen	Purified adaptors.
Product Application Details	
Applications	Western Blot, Flow Cytometry, Immunocytochemistry/ Immunofluorescence, Immunohistochemistry, Immunoprecipitation, Block/Neutralize
Recommended Dilutions	Western Blot 1:200, Flow Cytometry 1 ug / 10 ⁶ cells, Immunohistochemistry 1:10 - 1:500, Immunocytochemistry/ Immunofluorescence 1 - 2 ug/ml, Immunoprecipitation 1:10 - 1:500, Block/Neutralize
Application Notes	WB: Detects an approx. 100 kDa doublet representing the two isoforms of alpha-adaptin in rat brain, though alpha C is the dominant form seen. Microinjection of cells with this antibody results in variable blockade of endocytosis.

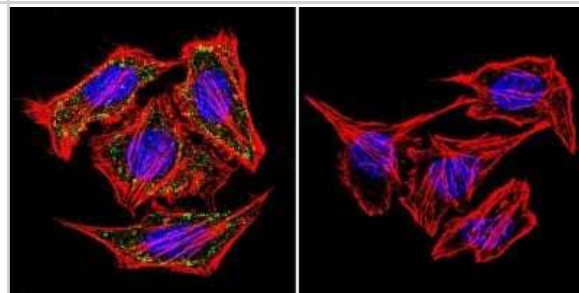


Images

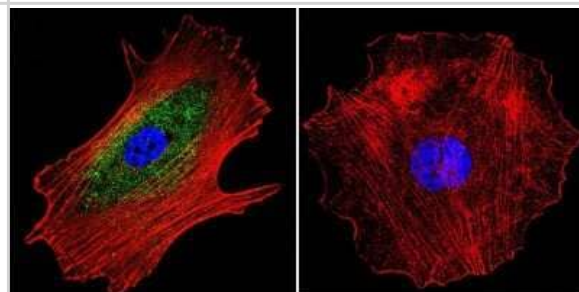
Immunocytochemistry/Immunofluorescence: alpha Adaptin Antibody (AP6) [NB600-1545] - alpha Adaptin (green), F-Actin staining with Phalloidin (red) and nuclei with DAPI (blue) is shown. Cells were grown on chamber slides and fixed with formaldehyde prior to staining. Cells were probed without (control) or with an antibody recognizing alpha Adaptin at a dilution of 1:20 over night at 4C, washed with PBS and incubated with a DyLight-488 conjugated.



Immunocytochemistry/Immunofluorescence: alpha Adaptin Antibody (AP6) [NB600-1545] - alpha Adaptin (green), F-Actin staining with Phalloidin (red) and nuclei with DAPI (blue) is shown. Cells were grown on chamber slides and fixed with formaldehyde prior to staining. Cells were probed without (control) or with an antibody recognizing alpha Adaptin at a dilution of 1:20 over night at 4C, washed with PBS and incubated with a DyLight-488 conjugated.



Immunocytochemistry/Immunofluorescence: alpha Adaptin Antibody (AP6) [NB600-1545] - alpha Adaptin (green), F-Actin staining with Phalloidin (red) and nuclei with DAPI (blue) is shown. Cells were grown on chamber slides and fixed with formaldehyde prior to staining. Cells were probed without (control) or with an antibody recognizing alpha Adaptin at a dilution of 1:20 over night at 4C, washed with PBS and incubated with a DyLight-488 conjugated.





Novus Biologicals USA

10730 E. Briarwood Avenue
Centennial, CO 80112
USA
Phone: 303.730.1950
Toll Free: 1.888.506.6887
Fax: 303.730.1966
nb-customerservice@bio-techne.com

Bio-Techne Canada

21 Canmotor Ave
Toronto, ON M8Z 4E6
Canada
Phone: 905.827.6400
Toll Free: 855.668.8722
Fax: 905.827.6402
canada.inquires@bio-techne.com

Bio-Techne Ltd

19 Barton Lane
Abingdon Science Park
Abingdon, OX14 3NB, United Kingdom
Phone: (44) (0) 1235 529449
Free Phone: 0800 37 34 15
Fax: (44) (0) 1235 533420
info.EMEA@bio-techne.com

General Contact Information

www.novusbio.com
Technical Support: nb-technical@bio-techne.com
Orders: nb-customerservice@bio-techne.com
General: novus@novusbio.com

Limitations

This product is for research use only and is not approved for use in humans or in clinical diagnosis. Primary Antibodies are guaranteed for 1 year from date of receipt.

For more information on our 100% guarantee, please visit www.novusbio.com/guarantee

Earn gift cards/discounts by submitting a review: www.novusbio.com/reviews/submit/NB600-1545

Earn gift cards/discounts by submitting a publication using this product:
www.novusbio.com/publications

