

Product Datasheet

Podoplanin Antibody (18H5) - Azide and BSA Free NB600-1013-0.02mg

Unit Size: 0.02 mg

Store at 4C short term. Aliquot and store at -20C long term. Avoid freeze-thaw cycles.

www.novusbio.com



technical@novusbio.com

Publications: 2

Protocols, Publications, Related Products, Reviews, Research Tools and Images at:
www.novusbio.com/NB600-1013

Updated 9/9/2025 v.20.1

Earn rewards for product
reviews and publications.

Submit a publication at www.novusbio.com/publications

Submit a review at www.novusbio.com/reviews/destination/NB600-1013



NB600-1013-0.02mg

Podoplanin Antibody (18H5) - Azide and BSA Free

Product Information	
Unit Size	0.02 mg
Concentration	LYOPH mg/ml
Storage	Store at 4C short term. Aliquot and store at -20C long term. Avoid freeze-thaw cycles.
Clonality	Monoclonal
Clone	18H5
Preservative	No Preservative
Reconstitution Instructions	Centrifuge vial prior to opening. Reconstitute in sterile water to a concentration of 0.1-1.0 mg/ml. Please note the sample size of this product will be provided in reconstituted liquid form.
Isotype	IgG1
Purity	Protein G purified
Buffer	PBS

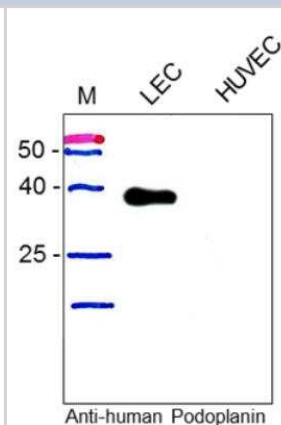
Product Description	
Description	Novus Biologicals Mouse Podoplanin Antibody (18H5) - Azide and BSA Free (NB600-1013) is a monoclonal antibody validated for use in IHC, WB, Flow and ICC/IF. Anti-Podoplanin Antibody: Cited in 2 publications. All Novus Biologicals antibodies are covered by our 100% guarantee.
Host	Mouse
Gene ID	10630
Gene Symbol	PDPN
Species	Human
Marker	Lymphatic Endothelium Marker
Immunogen	MDCK cells stably expressing gp36 (Podoplanin) protein

Product Application Details	
Applications	Western Blot, Flow Cytometry, Immunocytochemistry/ Immunofluorescence, Immunohistochemistry, CyTOF-ready
Recommended Dilutions	Western Blot 1 - 5 ug/ml, Flow Cytometry 1 - 10 ug/ml, Immunohistochemistry 6 - 30 ug/ml, Immunocytochemistry/ Immunofluorescence 6 - 30 ug/ml, CyTOF-ready
Application Notes	This antibody is Cytof ready.

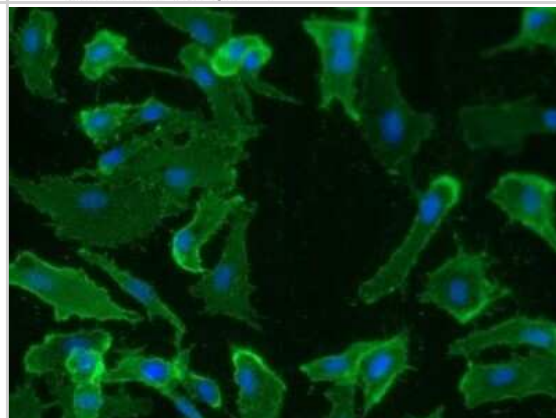


Images

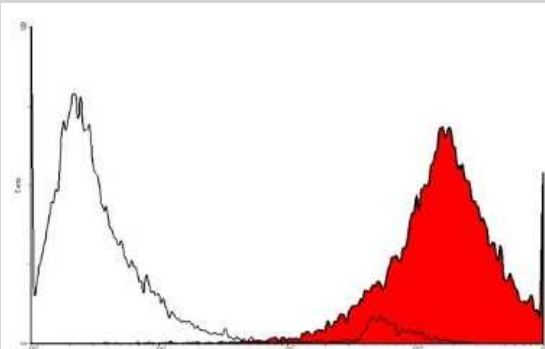
Western Blot: Podoplanin Antibody (18H5) [NB600-1013] - Fig. 1: Western blot analysis of Podoplanin expression in human lymphatic endothelial cells (LEC) and HUVECs. Total lysate of both cell types were subjected to SDS-PAGE and subsequent Western analysis using our monoclonal and polyclonal antibodies. Both antibodies recognize a protein of about 36 kDa in total lysate from LECs but not from HUVEC.



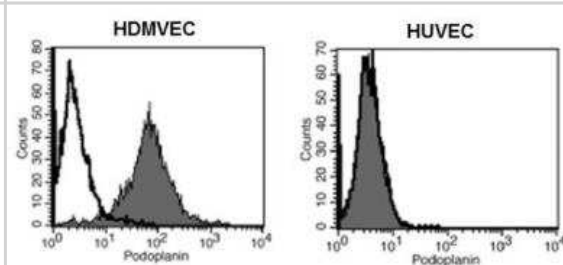
Immunocytochemistry/Immunofluorescence: Podoplanin Antibody (18H5) [NB600-1013] - staining (green) of Podoplanin in primary human dermal lymphatic endothelial cells (HDLEC) with anti-human Podoplanin (0,5ug/ml) and counter staining of nuclei with Dapi. As secondary antibody goat anti-mouse ALEXA Flour 488 was used 1:400.



Flow Cytometry: Podoplanin Antibody (18H5) [NB600-1013] - analysis with human primary lymphatic endothelial cells (HDLEC). As secondary antibody anti-mouse IgG-PE was used.



Flow Cytometry: Podoplanin Antibody (18H5) [NB600-1013] - Fig. 1: Flow analysis of Podoplanin expression in primary human dermal microvascular endothelial cells (HDMVEC) and human umbilical vein endothelial cells (HUVEC). As expected there is no expression of Podoplanin detectable in the HUVECs but a strong one in the HDMVEC.



Publications

Ducoli L, Agrawal S, Sibling E et al LETR1 is a lymphatic endothelial-specific lncRNA governing cell proliferation and migration through KLF4 and SEMA3C Nat Commun 2021-02-11 [PMID: 33568674] (FLOW, Human)

Details:

Citation using the Alexa Fluor 647 version of this antibody.

Tacconi C, He Y, Ducoli L, Detmar M Epigenetic regulation of the lineage specificity of primary human dermal lymphatic and blood vascular endothelial cells Angiogenesis 2020-09-12 [PMID: 32918672] (FLOW, Human)



Novus Biologicals USA

10730 E. Briarwood Avenue
Centennial, CO 80112

USA

Phone: 303.730.1950

Toll Free: 1.888.506.6887

Fax: 303.730.1966

nb-customerservice@bio-techne.com

Bio-Techne Canada

21 Canmotor Ave
Toronto, ON M8Z 4E6

Canada

Phone: 905.827.6400

Toll Free: 855.668.8722

Fax: 905.827.6402

canada.inquires@bio-techne.com

Bio-Techne Ltd

19 Barton Lane

Abingdon Science Park

Abingdon, OX14 3NB, United Kingdom

Phone: (44) (0) 1235 529449

Free Phone: 0800 37 34 15

Fax: (44) (0) 1235 533420

info.EMEA@bio-techne.com

General Contact Information

www.novusbio.com

Technical Support: nb-technical@bio-techne.com

Orders: nb-customerservice@bio-techne.com

General: novus@novusbio.com

Limitations

This product is for research use only and is not approved for use in humans or in clinical diagnosis. Primary Antibodies are guaranteed for 1 year from date of receipt.

For more information on our 100% guarantee, please visit www.novusbio.com/guarantee

Earn gift cards/discounts by submitting a review: www.novusbio.com/reviews/submit/NB600-1013

Earn gift cards/discounts by submitting a publication using this product:

www.novusbio.com/publications



