

Product Datasheet

HLA Class I Antibody (MEM-147) [mFluor Violet 500 SE] NB500-411MFV500

Unit Size: 0.1 ml

Store at 4C in the dark.

www.novusbio.com



technical@novusbio.com

Protocols, Publications, Related Products, Reviews, Research Tools and Images at:
www.novusbio.com/NB500-411MFV500

Updated 9/20/2023 v.20.1

Earn rewards for product
reviews and publications.

Submit a publication at www.novusbio.com/publications

Submit a review at www.novusbio.com/reviews/destination/NB500-411MFV500



NB500-411MFV500

HLA Class I Antibody (MEM-147) [mFluor Violet 500 SE]

Product Information

Unit Size	0.1 ml
Concentration	Please see the vial label for concentration. If unlisted please contact technical services.
Storage	Store at 4C in the dark.
Clonality	Monoclonal
Clone	MEM-147
Preservative	0.05% Sodium Azide
Isotype	IgG1
Conjugate	mFluor Violet 500 SE
Purity	Protein A purified
Buffer	50mM Sodium Borate

Product Description

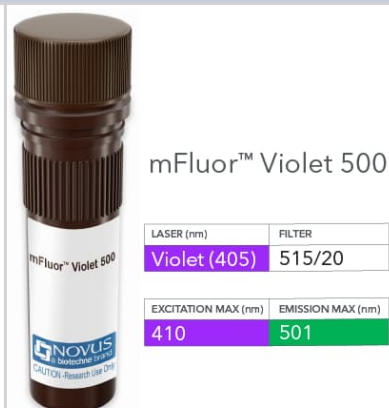
Host	Mouse
Gene ID	3105
Gene Symbol	HLA-A
Species	Human
Specificity/Sensitivity	This antibody (clone MEM-147) reacts with all human classical MHC Class I molecules in native cell-surface forms (e.g. it recognizes native HLA-A2 in cytofluorometry and immunoprecipitation but not in Western blotting). MHC Class I molecules (MHC Class Ia) are expressed on the surface of all human nucleated cell types. The antibody MEM-147 is positive in Western blotting (non-reducing conditions) only with most HLA-B and HLA-C molecules, but not HLA-A. Reactivity is very similar to the classical antibody W6/32.
Immunogen	PHA-activated peripheral blood lymphocytes

Product Application Details

Applications	Western Blot, Flow Cytometry, Immunoprecipitation, CyTOF-ready
Recommended Dilutions	Western Blot, Flow Cytometry, Immunoprecipitation, CyTOF-ready
Application Notes	Optimal dilution of this antibody should be experimentally determined.

Images

HLA Class I Antibody (MEM-147) [mFluor Violet 500 SE] - Vial of mFluor Violet 500 conjugated antibody. mFluor Violet 500 is optimally excited at 410 nm by the Violet laser (405 nm) and has an emission maximum of 501 nm.





Novus Biologicals USA

10730 E. Briarwood Avenue
Centennial, CO 80112
USA
Phone: 303.730.1950
Toll Free: 1.888.506.6887
Fax: 303.730.1966
nb-customerservice@bio-techne.com

Bio-Techne Canada

21 Canmotor Ave
Toronto, ON M8Z 4E6
Canada
Phone: 905.827.6400
Toll Free: 855.668.8722
Fax: 905.827.6402
canada.inquires@bio-techne.com

Bio-Techne Ltd

19 Barton Lane
Abingdon Science Park
Abingdon, OX14 3NB, United Kingdom
Phone: (44) (0) 1235 529449
Free Phone: 0800 37 34 15
Fax: (44) (0) 1235 533420
info.EMEA@bio-techne.com

General Contact Information

www.novusbio.com
Technical Support: nb-technical@bio-techne.com
Orders: nb-customerservice@bio-techne.com
General: novus@novusbio.com

Products Related to NB500-411MFV500

210-TA-005	TNF-alpha [Unconjugated]
285-IF-100	IFN-gamma [Unconjugated]
202-IL-010	IL-2 [Unconjugated]
NB120-6405	MHC Class I Antibody (OX18) - BSA Free

Limitations

This product is for research use only and is not approved for use in humans or in clinical diagnosis. Primary Antibodies are guaranteed for 1 year from date of receipt.

For more information on our 100% guarantee, please visit www.novusbio.com/guarantee

Earn gift cards/discounts by submitting a review: www.novusbio.com/reviews/submit/NB500-411MFV500

Earn gift cards/discounts by submitting a publication using this product:
www.novusbio.com/publications

