

Product Datasheet

Integrin beta 2/CD18 Antibody (MEM-48) [mFluor Violet 610 SE] NB500-379MFV610

Unit Size: 0.1 ml

Store at 4C in the dark.

www.novusbio.com



technical@novusbio.com

Protocols, Publications, Related Products, Reviews, Research Tools and Images at:
www.novusbio.com/NB500-379MFV610

Updated 9/20/2023 v.20.1

Earn rewards for product
reviews and publications.

Submit a publication at www.novusbio.com/publications

Submit a review at www.novusbio.com/reviews/destination/NB500-379MFV610



NB500-379MFV610

Integrin beta 2/CD18 Antibody (MEM-48) [mFluor Violet 610 SE]

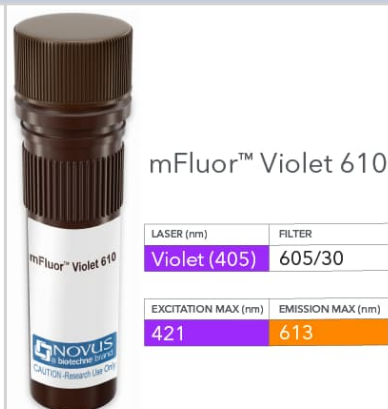
Product Information	
Unit Size	0.1 ml
Concentration	Please see the vial label for concentration. If unlisted please contact technical services.
Storage	Store at 4C in the dark.
Clonality	Monoclonal
Clone	MEM-48
Preservative	0.05% Sodium Azide
Isotype	IgG1
Conjugate	mFluor Violet 610 SE
Purity	Multi-step
Buffer	50mM Sodium Borate

Product Description	
Host	Mouse
Gene ID	3689
Gene Symbol	ITGB2
Species	Human
Specificity/Sensitivity	The antibody MEM-48 recognizes an epitope involving residues 534-546 in cysteine-rich repeat 3 of the CD18 antigen (integrin beta2 subunit; beta2 integrin). CD18 is a 90-95 kDa type I transmembrane protein expressed on all leukocytes.
Immunogen	Leukocytes of a patient suffering from a LGL-type leukemia.

Product Application Details	
Applications	Western Blot, Flow Cytometry, Immunohistochemistry, Immunohistochemistry-Frozen, Immunohistochemistry-Paraffin, Immunoprecipitation, Radioimmunoassay, CyTOF-ready
Recommended Dilutions	Western Blot, Flow Cytometry, Immunohistochemistry, Immunoprecipitation, Immunohistochemistry-Paraffin, Immunohistochemistry-Frozen, Radioimmunoassay, CyTOF-ready
Application Notes	Optimal dilution of this antibody should be experimentally determined.

Images

Integrin beta 2/CD18 Antibody (MEM-48) [mFluor Violet 610 SE] [NB500-379MFV610] - Vial of mFluor Violet 610 conjugated antibody. mFluor Violet 610 is optimally excited at 421 nm by the Violet laser (405 nm) and has an emission maximum of 613 nm.





Novus Biologicals USA

10730 E. Briarwood Avenue
Centennial, CO 80112
USA
Phone: 303.730.1950
Toll Free: 1.888.506.6887
Fax: 303.730.1966
nb-customerservice@bio-techne.com

Bio-Techne Canada

21 Canmotor Ave
Toronto, ON M8Z 4E6
Canada
Phone: 905.827.6400
Toll Free: 855.668.8722
Fax: 905.827.6402
canada.inquires@bio-techne.com

Bio-Techne Ltd

19 Barton Lane
Abingdon Science Park
Abingdon, OX14 3NB, United Kingdom
Phone: (44) (0) 1235 529449
Free Phone: 0800 37 34 15
Fax: (44) (0) 1235 533420
info.EMEA@bio-techne.com

General Contact Information

www.novusbio.com
Technical Support: nb-technical@bio-techne.com
Orders: nb-customerservice@bio-techne.com
General: novus@novusbio.com

Products Related to NB500-379MFV610

NBP2-52351-0.05mg	Recombinant Human Integrin beta 2/CD18 His Protein
210-TA-005	TNF-alpha [Unconjugated]
NBL1-12072	Integrin beta 2/CD18 Overexpression Lysate
D6050	IL-6 [HRP]

Limitations

This product is for research use only and is not approved for use in humans or in clinical diagnosis. Primary Antibodies are guaranteed for 1 year from date of receipt.

For more information on our 100% guarantee, please visit www.novusbio.com/guarantee

Earn gift cards/discounts by submitting a review: www.novusbio.com/reviews/submit/NB500-379MFV610

Earn gift cards/discounts by submitting a publication using this product:
www.novusbio.com/publications

