

# Product Datasheet

## SERCA2 ATPase Antibody (2A7-A1) NB300-581-10uL

Unit Size: 10 uL

Store at -20C. Avoid freeze-thaw cycles.

[www.novusbio.com](http://www.novusbio.com)



[technical@novusbio.com](mailto:technical@novusbio.com)

**Reviews: 2 Publications: 17**

Protocols, Publications, Related Products, Reviews, Research Tools and Images at:  
[www.novusbio.com/NB300-581](http://www.novusbio.com/NB300-581)

Updated 9/9/2025 v.20.1

**Earn rewards for product  
reviews and publications.**

Submit a publication at [www.novusbio.com/publications](http://www.novusbio.com/publications)

Submit a review at [www.novusbio.com/reviews/destination/NB300-581](http://www.novusbio.com/reviews/destination/NB300-581)



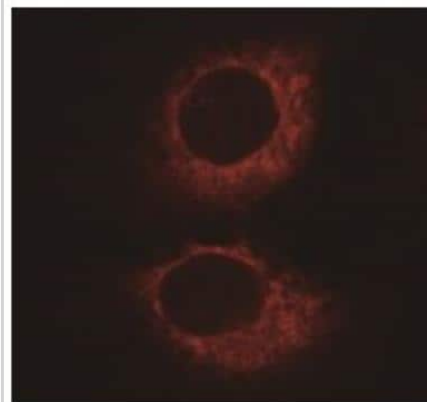
**NB300-581-10uL****SERCA2 ATPase Antibody (2A7-A1)**

<b>Product Information</b>	
<b>Unit Size</b>	10 uL
<b>Concentration</b>	This product is unpurified. The exact concentration of antibody is not quantifiable.
<b>Storage</b>	Store at -20C. Avoid freeze-thaw cycles.
<b>Clonality</b>	Monoclonal
<b>Clone</b>	2A7-A1
<b>Preservative</b>	0.05% Sodium Azide
<b>Isotype</b>	IgG2a
<b>Purity</b>	Unpurified
<b>Buffer</b>	Ascites
<b>Product Description</b>	
<b>Description</b>	Novus Biologicals Mouse SERCA2 ATPase Antibody (2A7-A1) (NB300-581) is a monoclonal antibody validated for use in IHC, WB, Flow, ICC/IF, Simple Western and IP. Anti-SERCA2 ATPase Antibody: Cited in 17 publications. All Novus Biologicals antibodies are covered by our 100% guarantee.
<b>Host</b>	Mouse
<b>Gene ID</b>	488
<b>Gene Symbol</b>	ATP2A2
<b>Species</b>	Human, Mouse, Rat, Porcine, Amphibian, Canine, Guinea Pig, Rabbit, Sheep
<b>Reactivity Notes</b>	Sheep reactivity reported in scientific literature (PMID: 21289077). Amphibian reactivity reported in scientific literature (PMID: 12022876). Please note that this antibody is reactive to Mouse and derived from the same host, Mouse. Additional Mouse on Mouse blocking steps may be required for IHC and ICC experiments. Please contact Technical Support for more information.
<b>Specificity/Sensitivity</b>	Detects sarcoplasmic or endoplasmic reticulum calcium (SERCA) 2 ATPase. NB300-581 recognizes the SERCA2a and SERCA2b isoforms identically. However, the antibody does not recognize the skeletal muscle (SERCA1) or housekeeping isoforms (SERCA3).
<b>Immunogen</b>	Purified canine cardiac sarcoplasmic reticulum vesicles.
<b>Product Application Details</b>	
<b>Applications</b>	Western Blot, Simple Western, Immunohistochemistry-Paraffin, Flow Cytometry, Immunocytochemistry/ Immunofluorescence, Immunohistochemistry, Immunohistochemistry-Frozen, Immunoprecipitation
<b>Recommended Dilutions</b>	Western Blot 1:1000, Simple Western 1:10 - 1:250, Flow Cytometry 1 ug / 10 <sup>6</sup> cells, Immunohistochemistry 1:100, Immunocytochemistry/ Immunofluorescence 1:10 - 1:500, Immunoprecipitation 1:10 - 1:500, Immunohistochemistry-Paraffin 1 ug/mL, Immunohistochemistry-Frozen 1:100
<b>Application Notes</b>	WB: Detects an approx. 110 kDa protein representing SERCA2 ATPase in rat cardiac tissue.

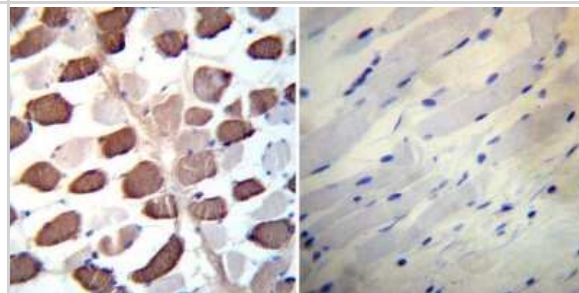


## Images

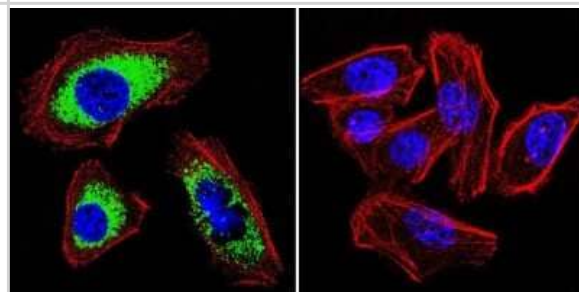
Immunocytochemistry/Immunofluorescence: SERCA2 ATPase Antibody (2A7-A1) [NB300-581] - HeLa cells. Primary antibody at 1:100, secondary antibody: goat-anti mouse IgG AlexaFluor 568 at 1:100. ICC/IF image submitted by a verified customer review.



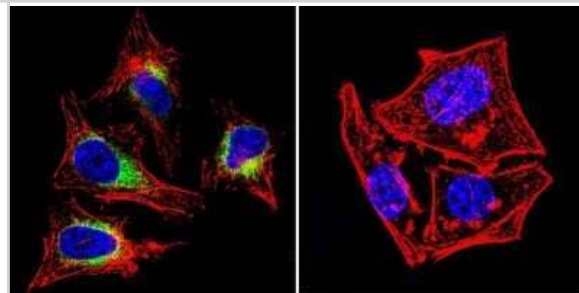
Immunohistochemistry-Paraffin: SERCA2 ATPase Antibody (2A7-A1) [NB300-581] - Both normal and cancer biopsies of deparaffinized Human skeletal muscle tissues.



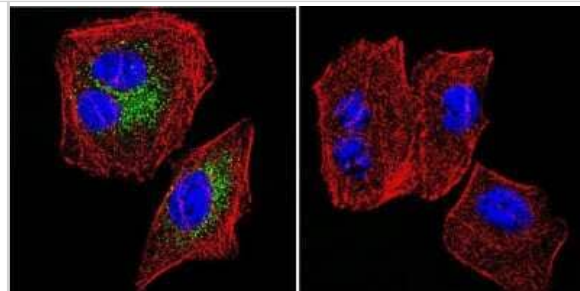
Immunocytochemistry/Immunofluorescence: SERCA2 ATPase Antibody (2A7-A1) [NB300-581] - SERCA2 ATPase staining (green), F-Actin staining with Phalloidin (red) and nuclei with DAPI (blue) is shown. Cells were grown on chamber slides and fixed with formaldehyde prior to staining. Cells were probed without (control) or with or an antibody recognizing SERCA2 ATPase at a dilution of 1:100-1:200 over night at 4C, washed with PBS and incubated with a DyLight-488 conjugated.



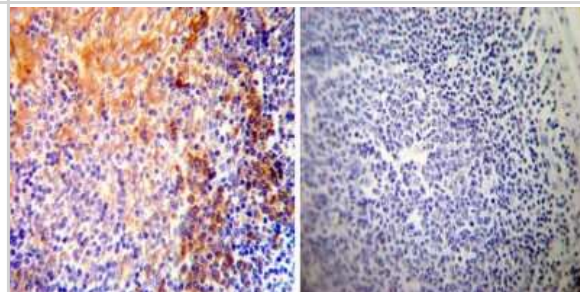
Immunocytochemistry/Immunofluorescence: SERCA2 ATPase Antibody (2A7-A1) [NB300-581] - SERCA2 ATPase staining (green), F-Actin staining with Phalloidin (red) and nuclei with DAPI (blue) is shown. Cells were grown on chamber slides and fixed with formaldehyde prior to staining. Cells were probed without (control) or with or an antibody recognizing SERCA2 ATPase at a dilution of 1:100-1:200 over night at 4C, washed with PBS and incubated with a DyLight-488 conjugated.



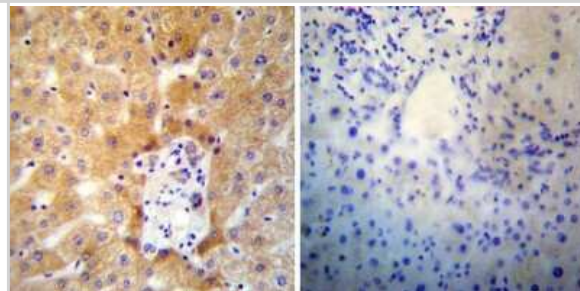
Immunocytochemistry/Immunofluorescence: SERCA2 ATPase Antibody (2A7-A1) [NB300-581] - SERCA2 ATPase staining (green), F-Actin staining with Phalloidin (red) and nuclei with DAPI (blue) is shown. Cells were grown on chamber slides and fixed with formaldehyde prior to staining. Cells were probed without (control) or with or an antibody recognizing SERCA2 ATPase at a dilution of 1:100-1:200 over night at 4C, washed with PBS and incubated with a DyLight-488 conjugated.



Immunohistochemistry-Paraffin: SERCA2 ATPase Antibody (2A7-A1) [NB300-581] - Both normal and cancer biopsies of deparaffinized Human tonsil tissues.



Immunohistochemistry-Paraffin: SERCA2 ATPase Antibody (2A7-A1) [NB300-581] - Both normal and cancer biopsies of deparaffinized Human liver tissues.



## Publications

- Courjaret RJ, Wagner LE, Ammouri RR et Al. Ca<sup>2+</sup> tunneling architecture and function are important for secretion J Cell Biol 2024-11-05 [PMID: 39499286]
- Tanton H, Sewastianik T, Seo HS et al. A novel beta-catenin/BCL9 complex inhibitor blocks oncogenic Wnt signaling and disrupts cholesterol homeostasis in colorectal cancer Science advances 2022-04-29 [PMID: 35486727] (ICC/IF)
- Hammad AS, Yu F, Botheju WS Et al. Phosphorylation of STIM1 at ERK/CDK sites is dispensable for cell migration and ER partitioning in mitosis Cell calcium 2021-10-23 [PMID: 34715400] (ICC/IF, Mouse)
- Uchida Y, Yamamoto Y, Sakisaka T Trans-2-enoyl-CoA reductase limits Ca<sup>2+</sup> accumulation in the endoplasmic reticulum by inhibiting the Ca<sup>2+</sup> pump SERCA2b The Journal of biological chemistry 2021-01-19 [PMID: 33482198]
- Xie D, Geng L, Xiong K et al. Cold-Inducible RNA-Binding Protein Prevents an Excessive Heart Rate Response to Stress by Targeting Phosphodiesterase Circ. Res. 2020-03-26 [PMID: 32212953] (WB)
- Chung YJ, Luo A, Park KC et al. Iron deficiency anemia reduces cardiac contraction by downregulating RyR2 channels and suppressing SERCA pump activity JCI Insight 2019-02-19 [PMID: 30779710] (WB, Mouse)
- Schroeder MA, Ali MA, Hulikova A et al. Extramitochondrial domain rich in carbonic anhydrase activity improves myocardial energetics. Proc Natl Acad Sci U S A 2013-03-05 [PMID: 23431149] (WB, Rat)
- Klug D, Boule S, Wissocque L et al. Right Ventricular Pacing With Mechanical Dyssynchrony Causes Apoptosis Interruptus and Calcium Mishandling Can J Cardiol 2012-10-10 [PMID: 23062666] (WB, Porcine)
- Prasad AM et al. Phenylephrine hypertrophy, Ca<sup>2+</sup>-ATPase (SERCA2), and Ca<sup>2+</sup> signaling in neonatal rat cardiac myocytes. Am J Physiol Cell Physiol;292(6):C2269-75. 2007-06-01 [PMID: 17287366] (ICC/IF)
- Movsesian MA et al. Ca(2+)-transporting ATPase, phospholamban, and calsequestrin levels in nonfailing and failing human myocardium. Circulation;90(2):653-7. 1994-08-01 [PMID: 8044934] (WB)
- Khan SA et al. Neuronal nitric oxide synthase negatively regulates xanthine oxidoreductase inhibition of cardiac excitation-contraction coupling. Proc Natl Acad Sci U S A;101(45):15944-8. 2004-11-09 [PMID: 15486091] (IP)
- Krizaj D, Liu X, Copenhagen DR et al. Expression of calcium transporters in the retina of the tiger salamander (*Ambystoma tigrinum*). J Comp Neurol. 2004-08-01 [PMID: 15236230] (IF/IHC)
- More publications at <http://www.novusbio.com/NB300-581>





### **Novus Biologicals USA**

10730 E. Briarwood Avenue  
Centennial, CO 80112  
USA  
Phone: 303.730.1950  
Toll Free: 1.888.506.6887  
Fax: 303.730.1966  
nb-customerservice@bio-techne.com

### **Bio-Techne Canada**

21 Canmotor Ave  
Toronto, ON M8Z 4E6  
Canada  
Phone: 905.827.6400  
Toll Free: 855.668.8722  
Fax: 905.827.6402  
canada.inquires@bio-techne.com

### **Bio-Techne Ltd**

19 Barton Lane  
Abingdon Science Park  
Abingdon, OX14 3NB, United Kingdom  
Phone: (44) (0) 1235 529449  
Free Phone: 0800 37 34 15  
Fax: (44) (0) 1235 533420  
info.EMEA@bio-techne.com

### **General Contact Information**

www.novusbio.com  
Technical Support: nb-technical@bio-  
techne.com  
Orders: nb-customerservice@bio-techne.com  
General: novus@novusbio.com

### **Products Related to NB300-581-10uL**

---

HAF007	Goat anti-Mouse IgG Secondary Antibody [HRP]
NB720-B	Rabbit anti-Mouse IgG (H+L) Secondary Antibody [Biotin]
NBP1-96778	Mouse IgG2a Isotype Control (M2A)
NBP2-57446PEP	SERCA2 ATPase Recombinant Protein Antigen

---

### **Limitations**

This product is for research use only and is not approved for use in humans or in clinical diagnosis. Primary Antibodies are guaranteed for 1 year from date of receipt.

For more information on our 100% guarantee, please visit [www.novusbio.com/guarantee](http://www.novusbio.com/guarantee)

Earn gift cards/discounts by submitting a review: [www.novusbio.com/reviews/submit/NB300-581](http://www.novusbio.com/reviews/submit/NB300-581)

Earn gift cards/discounts by submitting a publication using this product:  
[www.novusbio.com/publications](http://www.novusbio.com/publications)

