

Product Datasheet

Integrin beta 2/CD18 Antibody (YFC118.3) - BSA Free NB200-610-0.025mg

Unit Size: 0.025 mg

Store at 4C short term. Aliquot and store at -20C long term. Avoid freeze-thaw cycles.

www.novusbio.com



technical@novusbio.com

Reviews: 2

Protocols, Publications, Related Products, Reviews, Research Tools and Images at:
www.novusbio.com/NB200-610

Updated 9/9/2025 v.20.1

Earn rewards for product
reviews and publications.

Submit a publication at www.novusbio.com/publications

Submit a review at www.novusbio.com/reviews/destination/NB200-610



NB200-610-0.025mg

Integrin beta 2/CD18 Antibody (YFC118.3) - BSA Free

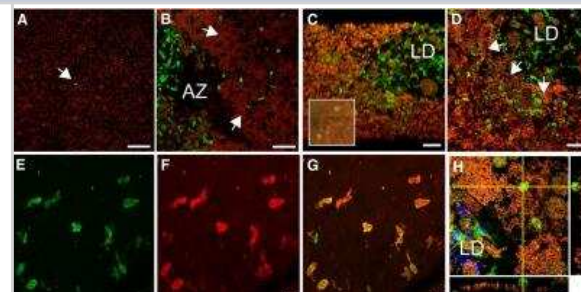
Product Information	
Unit Size	0.025 mg
Concentration	1 mg/ml
Storage	Store at 4C short term. Aliquot and store at -20C long term. Avoid freeze-thaw cycles.
Clonality	Monoclonal
Clone	YFC118.3
Preservative	0.09% Sodium Azide
Isotype	IgG2b
Purity	Protein G purified
Buffer	PBS

Product Description	
Description	Novus Biologicals Rat Integrin beta 2/CD18 Antibody (YFC118.3) - BSA Free (NB200-610) is a monoclonal antibody validated for use in IHC, Flow and IP. All Novus Biologicals antibodies are covered by our 100% guarantee.
Host	Rat
Gene ID	3689
Gene Symbol	ITGB2
Species	Human
Reactivity Notes	Predicted cross-reactivities: Dog, Guinea Pig
Specificity/Sensitivity	This recognises the human CD18 cell surface antigen, the integrin beta2 subunit. CD18 is expressed by the majority of leucocytes.
Immunogen	Human neutrophils

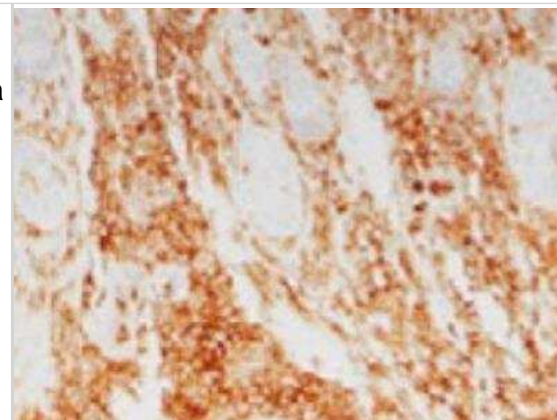
Product Application Details	
Applications	Flow Cytometry, Immunohistochemistry, Immunohistochemistry-Frozen, Immunoprecipitation
Recommended Dilutions	Flow Cytometry 1:50-1:100, Immunohistochemistry 1:10-1:500, Immunoprecipitation 1:10-1:500, Immunohistochemistry-Frozen 1:1000-1:5000

Images

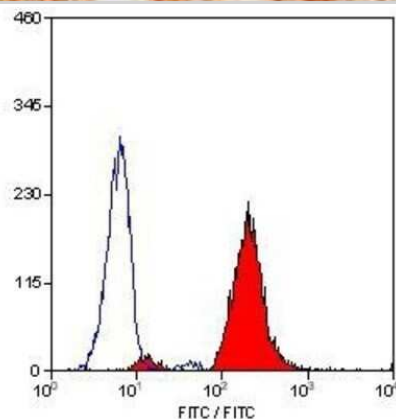
Immunocytochemistry/Immunofluorescence: Integrin beta 2/CD18 Antibody (YFC118.3) [NB200-610] - A-D Confocal microscopy of IBA-1 (green staining) immunohistochemistry of RPE flatmounts (RPE autofluorescence visible as orange due to its autofluorescence in the red and green channel) from a healthy donor (A), a geographic atrophy lesion (B), and large drusen (C and D). (A, B, D): orthogonal Z-stack projection; (C): oblique Z-stack projection and dissecting microscope appearance of postmortem large drusen after removal of the overlying retina (inset). E-G Double-labeling on the subretinal side of the retina (to avoid masking by RPE autofluorescence) of IBA-1+ (E, green fluorescence) and CD18 (F, red fluorescence; G, merge). H. Orthogonal and lateral Z-stack of a subretinal IBA-1+ (green fluorescence) MPs adjacent to the RPE (orange autofluorescence) in the vicinity of a large drusen.



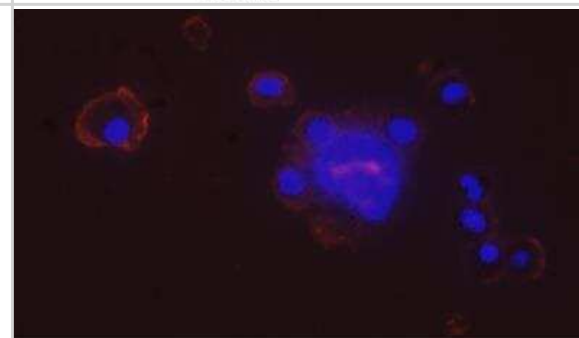
Immunohistochemistry-Frozen: Integrin beta 2/CD18 Antibody (YFC118.3) [NB200-610] - Canine histiocytic sarcoma stained with Integrin beta 2/CD18 Antibody (YFC118.3). IHC-Fr image submitted by a verified customer review.



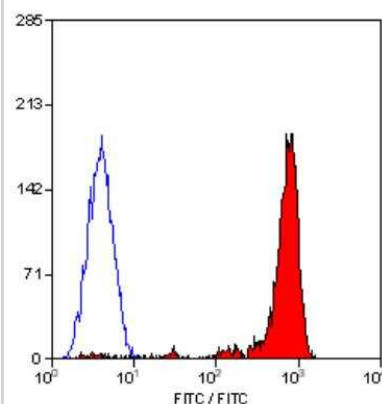
Flow Cytometry: Integrin beta 2/CD18 Antibody (YFC118.3) [NB200-610] - Staining of human peripheral blood granulocytes with RAT ANTI HUMAN CD18: FITC.



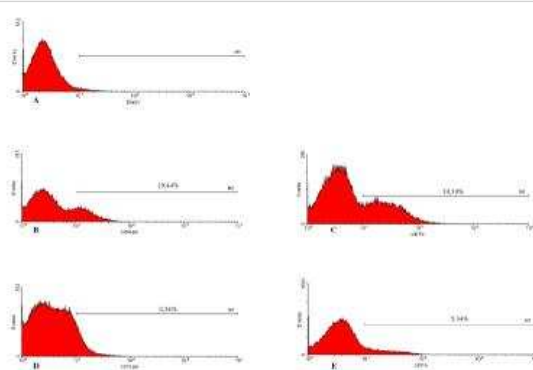
Immunocytochemistry/Immunofluorescence: Integrin beta 2/CD18 Antibody (YFC118.3) [NB200-610] - Analysis of canine thoracic fluid samples using anti-Integrin beta 2 antibody. The antibody showing positive cell surface staining. ICC/IF image submitted by a verified customer review.



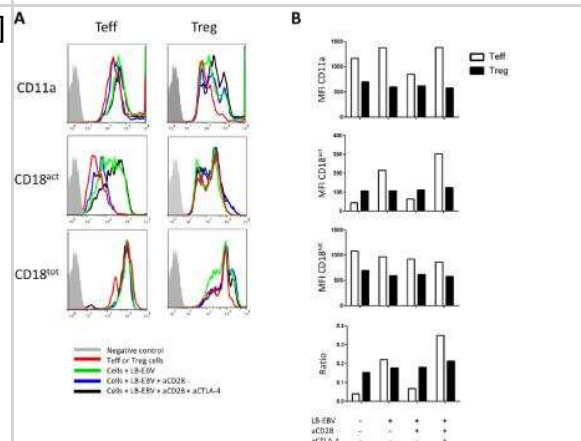
Flow Cytometry: Integrin beta 2/CD18 Antibody (YFC118.3) [NB200-610] - Staining of human peripheral blood lymphocytes with Rat anti Human CD18.



Flow Cytometry: Integrin beta 2/CD18 Antibody (YFC118.3) [NB200-610]
 - A) Isotype control with macrophages showing delineation of the M1 marker based on the negative population. B and C represent expression of CD18 (B) or CD11b (C) before incubation with Leishmania. D and E represent expression of CD18 (D) or CD11b (E) after association with Leishmania in a SD assay. In all cases the percent positive cells within the M1 marker are identified. This Figure is a representative diagram of 4 experiments with similar findings.



Flow Cytometry: Integrin beta 2/CD18 Antibody (YFC118.3) [NB200-610]
 - LFA-1 activation analyses by Flow Cytometry. (A) Profiles of CD11a, CD18 activation epitope (CD18act, representing high affinity conformation) and CD18 (CD18tot) expression by Teff and Treg#1 cells pre-incubated or not with indicated antibodies. Anti-CD28 and anti-CTLA-4 were used at 10 ug/ml. (B) Histograms of Mean Fluorescent Intensity (MFI) of CD11a, CD18act and CD18tot expressed on Teff and Treg#1 cells. Ratio CD18act MFI: CD18tot was established to analyze LFA-1 high affinity conformation in indicated conditions. Data are representative of more than three different experiments. Filled gray, negative control; Red line, Teff and Treg cells alone; Green line, cells with APC; Blue line, cells with APC and anti-CD28; and Black line: cells with APC, anti-CD28 and anti-CTLA-4.





Novus Biologicals USA

10730 E. Briarwood Avenue
Centennial, CO 80112
USA
Phone: 303.730.1950
Toll Free: 1.888.506.6887
Fax: 303.730.1966
nb-customerservice@bio-techne.com

Bio-Techne Canada

21 Canmotor Ave
Toronto, ON M8Z 4E6
Canada
Phone: 905.827.6400
Toll Free: 855.668.8722
Fax: 905.827.6402
canada.inquires@bio-techne.com

Bio-Techne Ltd

19 Barton Lane
Abingdon Science Park
Abingdon, OX14 3NB, United Kingdom
Phone: (44) (0) 1235 529449
Free Phone: 0800 37 34 15
Fax: (44) (0) 1235 533420
info.EMEA@bio-techne.com

General Contact Information

www.novusbio.com
Technical Support: nb-technical@bio-
techne.com
Orders: nb-customerservice@bio-techne.com
General: novus@novusbio.com

Limitations

This product is for research use only and is not approved for use in humans or in clinical diagnosis. Primary Antibodies are guaranteed for 1 year from date of receipt.

For more information on our 100% guarantee, please visit www.novusbio.com/guarantee

Earn gift cards/discounts by submitting a review: www.novusbio.com/reviews/submit/NB200-610

Earn gift cards/discounts by submitting a publication using this product:
www.novusbio.com/publications

