

Product Datasheet

Cytokeratin 8 Antibody (AE3) - BSA Free NB120-9287-0.025mg

Unit Size: 0.025 mg

Store at 4C short term. Aliquot and store at -20C long term. Avoid freeze-thaw cycles.

www.novusbio.com



technical@novusbio.com

Publications: 6

Protocols, Publications, Related Products, Reviews, Research Tools and Images at:
www.novusbio.com/NB120-9287

Updated 9/9/2025 v.20.1

Earn rewards for product
reviews and publications.

Submit a publication at www.novusbio.com/publications

Submit a review at www.novusbio.com/reviews/destination/NB120-9287



NB120-9287-0.025mg

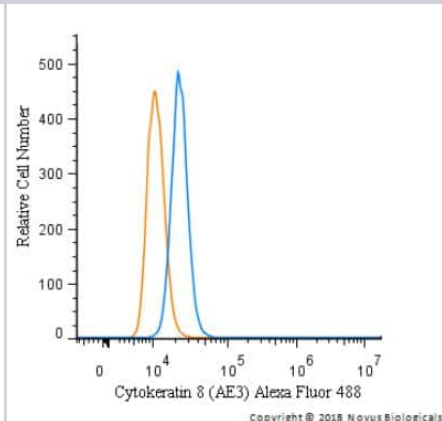
Cytokeratin 8 Antibody (AE3) - BSA Free

Product Information	
Unit Size	0.025 mg
Concentration	1.0 mg/ml
Storage	Store at 4C short term. Aliquot and store at -20C long term. Avoid freeze-thaw cycles.
Clonality	Monoclonal
Clone	AE3
Preservative	0.1% Sodium Azide
Isotype	IgG1
Purity	Protein A or G purified
Buffer	PBS
Product Description	
Description	Novus Biologicals Mouse Cytokeratin 8 Antibody (AE3) - BSA Free (NB120-9287) is a monoclonal antibody validated for use in IHC, WB and Flow. Anti-Cytokeratin 8 Antibody: Cited in 6 publications. All Novus Biologicals antibodies are covered by our 100% guarantee.
Host	Mouse
Gene ID	3856
Gene Symbol	KRT8
Species	Human, Mouse, Rat, Bovine, Chicken, Primate, Rabbit
Reactivity Notes	Please note that this antibody is reactive to Mouse and derived from the same host, Mouse. Mouse-On-Mouse blocking reagent may be needed for IHC and ICC experiments to reduce high background signal. You can find these reagents under catalog numbers PK-2200-NB and MP-2400-NB. Please contact Technical Support if you have any questions.
Marker	Epithelial Cell Marker
Specificity/Sensitivity	Recognizes most of the basic (Type II) keratins, HMW cytokeratins. It is broadly reactive and stains positively almost all epithelia and their neoplasms. AE3 reacts with all layers of epidermis (basal layer and above). The antibody is an excellent marker for distinguishing carcinomas from non-epithelial tumours. It has been used for studying the immunolocalisation of epidermal keratins, tissue distribution of keratins, various diseases of epidermis, oral mucosa and other epithelia and other epithelia development.
Immunogen	Human epidermal cells
Product Application Details	
Applications	Western Blot, Immunohistochemistry-Paraffin, Flow Cytometry, Immunohistochemistry, Immunohistochemistry-Frozen
Recommended Dilutions	Western Blot 1:100-1:2000, Flow Cytometry, Immunohistochemistry 1:10-1:500, Immunohistochemistry-Paraffin 1:10-1:500, Immunohistochemistry-Frozen
Application Notes	This antibody is suitable for staining formalin fixed paraffin wax embedded sections following enzyme digestion at a recommended dilution of at least 1:100. This antibody reacts with MCF-7, RT 112 & A 431 cultured cell lines. Use in FLOW reported in scientific literature (PMID 28497488 and 25468832).



Images

Flow Cytometry: Cytokeratin 8 Antibody (AE3) [NB120-9287] - An intracellular stain was performed on A431 cells with Cytokeratin 8 Antibody [AE3] NB120-9287AF488 (blue) and a matched isotype control (orange). Cells were fixed with 4% PFA and then permeabilized with 0.1% saponin. Cells were incubated in an antibody dilution of 5 ug/mL for 30 minutes at room temperature. Both antibodies were conjugated to Alexa Fluor 488.



Publications

Xia H, Jerde TJ, Fehrenbacher JC., et Al. Sensory innervation in the prostate and a role for calcitonin gene-related peptide in prostatic epithelial proliferation *Front Mol Neurosci* 2025-01-02 [PMID: 39744541]

Strittmatter Bg, Jerde Tj, Hollenhorst Pc Ras/ERK and PI3K/AKT signaling differentially regulate oncogenic ERG mediated transcription in prostate cells *PLoS genetics* 2021-07-27 [PMID: 34314419] (IF/IHC)

Kim MR, Wu MJ, Zhang Y et al TET2 directs mammary luminal cell differentiation and endocrine response *Nat Commun* 2020-09-16 [PMID: 32934200] (FLOW, FLOW, Mouse)

Details:

Citation using the Alexa Fluor 647 version of this antibody.

Chow T, Wong F T M et al. Recapitulating kidney development in vitro by priming and differentiating mouse embryonic stem cells in monolayers. *NPJ Regen Med* 2020-01-05 [PMID: 32351711] (IF/IHC, Mouse)

Colinot DL, Garbuz T, Bosland MC et al. The common parasite *Toxoplasma gondii* induces prostatic inflammation and microglandular hyperplasia in a mouse model. *Prostate* 2017-05-12 [PMID: 28497488] (FLOW, Mouse)

Rosddeutscher L, Li J, Luco AL et al. Chemoprevention activity of 25-hydroxyvitamin D in the MMTV-PyMT mouse model of breast cancer. *Cancer Prev Res Phila* 2014-12-02 [PMID: 25468832] (FLOW, Mouse)

Details:

This publication used the AF647 conjugated form of this antibody (NB120-9287AF647)



Novus Biologicals USA

10730 E. Briarwood Avenue
Centennial, CO 80112
USA
Phone: 303.730.1950
Toll Free: 1.888.506.6887
Fax: 303.730.1966
nb-customerservice@bio-techne.com

Bio-Techne Canada

21 Canmotor Ave
Toronto, ON M8Z 4E6
Canada
Phone: 905.827.6400
Toll Free: 855.668.8722
Fax: 905.827.6402
canada.inquires@bio-techne.com

Bio-Techne Ltd

19 Barton Lane
Abingdon Science Park
Abingdon, OX14 3NB, United Kingdom
Phone: (44) (0) 1235 529449
Free Phone: 0800 37 34 15
Fax: (44) (0) 1235 533420
info.EMEA@bio-techne.com

General Contact Information

www.novusbio.com
Technical Support: nb-technical@bio-
techne.com
Orders: nb-customerservice@bio-techne.com
General: novus@novusbio.com

Limitations

This product is for research use only and is not approved for use in humans or in clinical diagnosis. Primary Antibodies are guaranteed for 1 year from date of receipt.

For more information on our 100% guarantee, please visit www.novusbio.com/guarantee

Earn gift cards/discounts by submitting a review: www.novusbio.com/reviews/submit/NB120-9287

Earn gift cards/discounts by submitting a publication using this product:
www.novusbio.com/publications

