

# Product Datasheet

## LRRK2 Antibody Pack NB100-938-1Pack

Unit Size: 1 Pack

Store at 4C. Do not freeze.

[www.novusbio.com](http://www.novusbio.com)



[technical@novusbio.com](mailto:technical@novusbio.com)

Protocols, Publications, Related Products, Reviews, Research Tools and Images at:  
[www.novusbio.com/NB100-938](http://www.novusbio.com/NB100-938)

Updated 10/23/2024 v.20.1

Earn rewards for product  
reviews and publications.

Submit a publication at [www.novusbio.com/publications](http://www.novusbio.com/publications)

Submit a review at [www.novusbio.com/reviews/destination/NB100-938](http://www.novusbio.com/reviews/destination/NB100-938)



**NB100-938-1Pack****LRRK2 Antibody Pack**

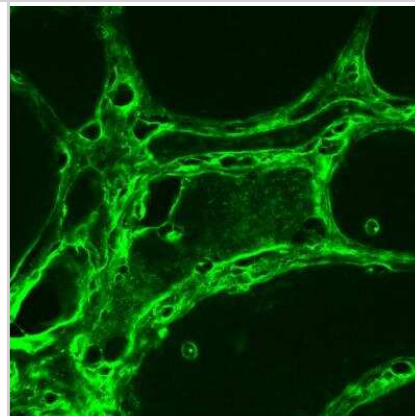
<b>Product Information</b>	
<b>Unit Size</b>	1 Pack
<b>Concentration</b>	Concentration of individual antibodies may be found on the vial label. If unlisted please contact technical services.
<b>Storage</b>	Store at 4C. Do not freeze.

<b>Product Description</b>	
<b>Description</b>	This pack contains 1 vial each of: NB110-55289 (0.1 mL) and NB300-268 (0.1 mL).
<b>Gene ID</b>	120892
<b>Gene Symbol</b>	LRRK2
<b>Species</b>	Human, Mouse, Bovine, C. elegans, Insect, Plant, Human (Negative)
<b>Reactivity Notes</b>	See individual datasheets of components for their validated species
<b>Immunogen</b>	See individual datasheets.
<b>Kit Components</b>	NB300-268: LRRK2 Antibody - BSA Free, NB110-55289: LRRK2 Antibody

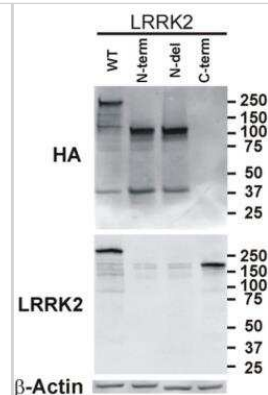
<b>Product Application Details</b>	
<b>Applications</b>	Western Blot, Flow Cytometry, Flow (Intracellular), Immunocytochemistry/Immunofluorescence, Immunohistochemistry, Immunohistochemistry-Frozen, Immunohistochemistry-Paraffin, Immunoprecipitation, Knockout Validated
<b>Recommended Dilutions</b>	Western Blot, Flow Cytometry, Immunohistochemistry, Immunocytochemistry/Immunofluorescence, Immunoprecipitation, Immunohistochemistry-Paraffin, Immunohistochemistry-Frozen, Flow (Intracellular), Knockout Validated
<b>Application Notes</b>	See individual datasheets of components for their validated applications

**Images**

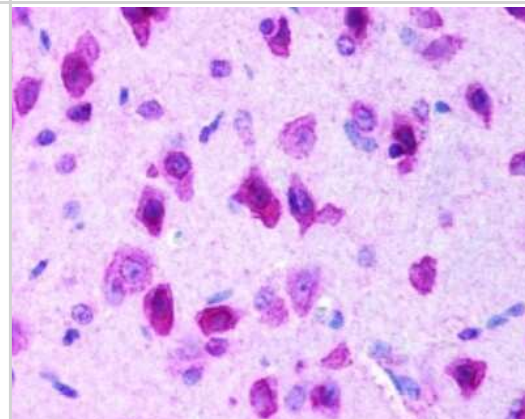
Immunohistochemistry-Frozen: LRRK2 Antibody Pack [NB100-938] - Staining of muscle sections as described in PMID 24312256. Image from verified customer review. LRRK2 Antibody [NB300-268]



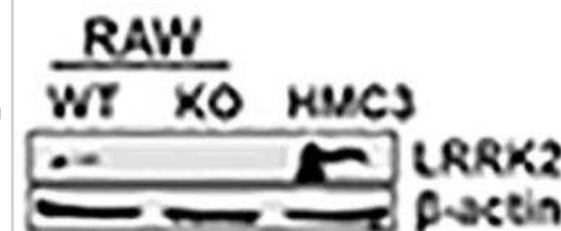
Western Blot: LRRK2 Antibody Pack [NB100-938] - LRRK2 N-terminal sequences show increased aggregation. Western blots of cell lysates of SH-SY5Y cells transfected with indicated LRRK2 construct showed equal expression of the LRRK2 protein with anti-HA (top panel) or anti-C-terminal- (bottom panel) LRRK2 antibody. Equal lysate loading is indicated by Beta-actin loading control. Image collected and cropped by CiteAb from the following publication ([//doi.org/10.1371/journal.pone.0045149](https://doi.org/10.1371/journal.pone.0045149)) licensed under a CC-BY license. LRRK2 Antibody [NB300-268]



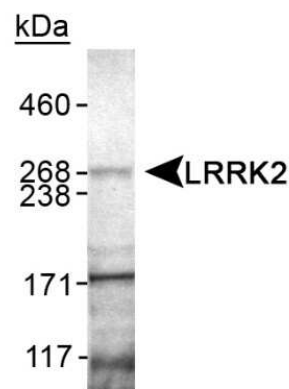
Immunohistochemistry: LRRK2 Antibody Pack [NB100-938] - Staining of neurons and glia using NB110-55289 at 2.5ug/ml. Mouse brain, 40x.



Knockout Validated: LRRK2 Antibody Pack [NB100-938] - Mn increases LRRK2 kinase activity and expression in RAW 264.7 and HMC3 cells. Two-hundred (200) ug of protein were collected from cell lysates, followed by western blot analysis to determine the presence of LRRK2 in LRRK2 WT, KO RAW 264.7 and HMC3 cells. Beta-actin was used as a loading control. Image collected and cropped by CiteAb from the following publication ([//doi.org/10.1371/journal.pone.0210248](https://doi.org/10.1371/journal.pone.0210248)) licensed under a CC-BY license. LRRK2 Antibody [NB300-268]



Western Blot: LRRK2 Antibody Pack [NB100-938] - Detection of murine LRRK2 in mouse brain lysate using NB110-55289.





### **Novus Biologicals USA**

10730 E. Briarwood Avenue  
Centennial, CO 80112  
USA  
Phone: 303.730.1950  
Toll Free: 1.888.506.6887  
Fax: 303.730.1966  
nb-customerservice@bio-techne.com

### **Bio-Techne Canada**

21 Canmotor Ave  
Toronto, ON M8Z 4E6  
Canada  
Phone: 905.827.6400  
Toll Free: 855.668.8722  
Fax: 905.827.6402  
canada.inquires@bio-techne.com

### **Bio-Techne Ltd**

19 Barton Lane  
Abingdon Science Park  
Abingdon, OX14 3NB, United Kingdom  
Phone: (44) (0) 1235 529449  
Free Phone: 0800 37 34 15  
Fax: (44) (0) 1235 533420  
info.EMEA@bio-techne.com

### **General Contact Information**

www.novusbio.com  
Technical Support: nb-technical@bio-  
techne.com  
Orders: nb-customerservice@bio-techne.com  
General: novus@novusbio.com

### **Products Related to NB100-938-1Pack**

---

NB300-268PEP	LRRK2 Antibody Blocking Peptide
BC100-494	PINK1 Antibody - BSA Free
NB300-268	LRRK2 Antibody - BSA Free
NB300-109	Tyrosine Hydroxylase Antibody

---

### **Limitations**

This product is for research use only and is not approved for use in humans or in clinical diagnosis. Antibody Packs are guaranteed for 1 year from date of receipt.

For more information on our 100% guarantee, please visit [www.novusbio.com/guarantee](http://www.novusbio.com/guarantee)

Earn gift cards/discounts by submitting a review: [www.novusbio.com/reviews/submit/NB100-938](http://www.novusbio.com/reviews/submit/NB100-938)

Earn gift cards/discounts by submitting a publication using this product:  
[www.novusbio.com/publications](http://www.novusbio.com/publications)

