

Product Datasheet

IL-28R alpha/IFN-lambda R1 Antibody NB100-741-0.025mg

Unit Size: 0.025 mg

Store at 4C short term. Aliquot and store at -20C long term. Avoid freeze-thaw cycles.

www.novusbio.com



technical@novusbio.com

Protocols, Publications, Related Products, Reviews, Research Tools and Images at:
www.novusbio.com/NB100-741

Updated 5/16/2023 v.20.1

Earn rewards for product
reviews and publications.

Submit a publication at www.novusbio.com/publications

Submit a review at www.novusbio.com/reviews/destination/NB100-741



NB100-741-0.025mg

IL-28R alpha/IFN-lambda R1 Antibody

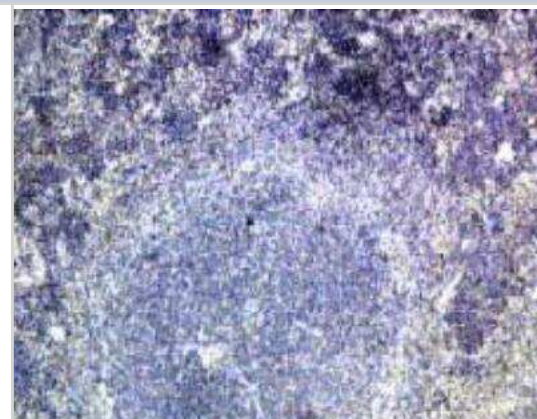
Product Information	
Unit Size	0.025 mg
Concentration	1.0 mg/ml
Storage	Store at 4C short term. Aliquot and store at -20C long term. Avoid freeze-thaw cycles.
Clonality	Polyclonal
Preservative	0.1% Sodium Azide
Isotype	IgG
Purity	Protein G purified
Buffer	10mM KHPO ₄ , 0.14M NaCl and 1.0 mg/ml BSA

Product Description	
Host	Goat
Gene ID	163702
Gene Symbol	IFNLR1
Species	Mouse, Rat
Specificity/Sensitivity	This recognizes the N-terminus of mouse CRF-2-12 (IL-28 receptor alpha) protein. This is likely to recognize rat CRF-2-12 (IL-28 receptor alpha) protein due to sequence similarity. The peptide sequence is < 50 % identical to other sequences in GenBank.
Immunogen	Synthetic peptide: LPGLGSPPNVTYFVTYQSYIKTGWRPVEH, corresponding to N terminal amino acids 44-72 of Mouse IL28 Receptor alpha.

Product Application Details	
Applications	ELISA, Flow Cytometry, Immunohistochemistry, Immunohistochemistry-Paraffin
Recommended Dilutions	Flow Cytometry 1:10, ELISA 1:50000, Immunohistochemistry 1:150, Immunohistochemistry-Paraffin 1:150

Images

Immunohistochemistry: IL-28 R alpha/IFN-lambda R1 Antibody [NB100-741] - Immunohistochemistry with goat antibody to CRF-2-12 on paraffin section of mouse spleen.





Novus Biologicals USA

10730 E. Briarwood Avenue
Centennial, CO 80112
USA
Phone: 303.730.1950
Toll Free: 1.888.506.6887
Fax: 303.730.1966
nb-customerservice@bio-techne.com

Bio-Techne Canada

21 Canmotor Ave
Toronto, ON M8Z 4E6
Canada
Phone: 905.827.6400
Toll Free: 855.668.8722
Fax: 905.827.6402
canada.inquires@bio-techne.com

Bio-Techne Ltd

19 Barton Lane
Abingdon Science Park
Abingdon, OX14 3NB, United Kingdom
Phone: (44) (0) 1235 529449
Free Phone: 0800 37 34 15
Fax: (44) (0) 1235 533420
info.EMEA@bio-techne.com

General Contact Information

www.novusbio.com
Technical Support: nb-technical@bio-techne.com
Orders: nb-customerservice@bio-techne.com
General: novus@novusbio.com

Limitations

This product is for research use only and is not approved for use in humans or in clinical diagnosis. Primary Antibodies are guaranteed for 1 year from date of receipt.

For more information on our 100% guarantee, please visit www.novusbio.com/guarantee

Earn gift cards/discounts by submitting a review: www.novusbio.com/reviews/submit/NB100-741

Earn gift cards/discounts by submitting a publication using this product:
www.novusbio.com/publications

