

# Product Datasheet

## SLC7A5/LAT1 Antibody - Azide and BSA Free NB100-734-0.025mg

Unit Size: 0.025 mg

Aliquot and store at -20C or -80C. Avoid freeze-thaw cycles.

[www.novusbio.com](http://www.novusbio.com)



[technical@novusbio.com](mailto:technical@novusbio.com)

### Publications: 5

Protocols, Publications, Related Products, Reviews, Research Tools and Images at:  
[www.novusbio.com/NB100-734](http://www.novusbio.com/NB100-734)

Updated 6/11/2024 v.20.1

Earn rewards for product  
reviews and publications.

Submit a publication at [www.novusbio.com/publications](http://www.novusbio.com/publications)

Submit a review at [www.novusbio.com/reviews/destination/NB100-734](http://www.novusbio.com/reviews/destination/NB100-734)



**NB100-734-0.025mg**

SLC7A5/LAT1 Antibody - Azide and BSA Free

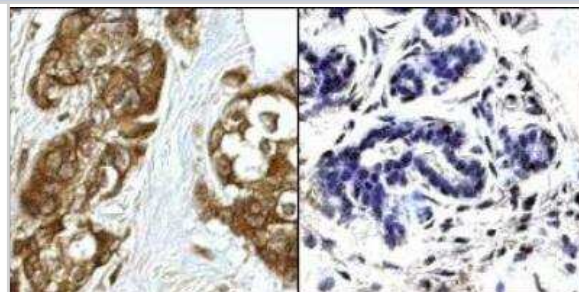
Product Information	
Unit Size	0.025 mg
Concentration	1.9 mg/ml
Storage	Aliquot and store at -20C or -80C. Avoid freeze-thaw cycles.
Clonality	Polyclonal
Preservative	No Preservative
Isotype	IgG
Purity	IgG purified
Buffer	PBS

Product Description	
Host	Rabbit
Gene ID	8140
Gene Symbol	SLC7A5
Species	Human
Immunogen	KLH conjugated synthetic peptide (RHRKPEL) representing aa 419-425 of Human LAT1.

Product Application Details	
Applications	Immunohistochemistry, Immunohistochemistry-Paraffin
Recommended Dilutions	Immunohistochemistry 5 ug/ml, Immunohistochemistry-Paraffin 5 ug/ml

**Images**

Immunohistochemistry-Paraffin: SLC7A5/LAT1 Antibody [NB100-734] -  
 Left: primary breast cancer tumor; Right: normal breast tissue.



## Publications

Otani R, Takigawa H, Yuge R et al. The Anti-Tumor Effect of the Newly Developed LAT1 Inhibitor JPH203 in Colorectal Carcinoma, According to a Comprehensive Analysis Cancers (Basel) 2023-02-22 [PMID: 36900176]

Sekine M, Koh I, Nakamoto K et al. Selective Inhibition of L-type Amino Acid Transporter 1 Suppresses Cell Proliferation in Ovarian Clear Cell Carcinoma Anticancer research 2023-06-01 [PMID: 37247931] (IHC)

Sawazaki H, Arai Y, Ito Y Et al. Expression of L-Type Amino Acid Transporter 1 is a Predictive Biomarker of Intravesical Recurrence in Patients with Non-Muscle Invasive Bladder Cancer Research and reports in urology 2021-08-21 [PMID: 34458203] (IF/IHC, Human)

Sato K, Miyamoto M, Takano M, Tsuda H Correlation of high LAT1 expression with the prognosis of endometrioid carcinoma of the uterine corpus Virchows Arch. 2020-03-06 [PMID: 32144539] (IF/IHC)

Sato K, Miyamoto M, Takano M et al. Significant relationship between the LAT1 expression pattern and chemoresistance in ovarian clear cell carcinoma. Virchows Arch. 2019-01-13 [PMID: 30637450] (IHC-P, Human)





### **Novus Biologicals USA**

10730 E. Briarwood Avenue  
Centennial, CO 80112  
USA  
Phone: 303.730.1950  
Toll Free: 1.888.506.6887  
Fax: 303.730.1966  
nb-customerservice@bio-techne.com

### **Bio-Techne Canada**

21 Canmotor Ave  
Toronto, ON M8Z 4E6  
Canada  
Phone: 905.827.6400  
Toll Free: 855.668.8722  
Fax: 905.827.6402  
canada.inquires@bio-techne.com

### **Bio-Techne Ltd**

19 Barton Lane  
Abingdon Science Park  
Abingdon, OX14 3NB, United Kingdom  
Phone: (44) (0) 1235 529449  
Free Phone: 0800 37 34 15  
Fax: (44) (0) 1235 533420  
info.EMEA@bio-techne.com

### **General Contact Information**

www.novusbio.com  
Technical Support: nb-technical@bio-techne.com  
Orders: nb-customerservice@bio-techne.com  
General: novus@novusbio.com

### **Limitations**

This product is for research use only and is not approved for use in humans or in clinical diagnosis. Primary Antibodies are guaranteed for 1 year from date of receipt.

For more information on our 100% guarantee, please visit [www.novusbio.com/guarantee](http://www.novusbio.com/guarantee)

Earn gift cards/discounts by submitting a review: [www.novusbio.com/reviews/submit/NB100-734](http://www.novusbio.com/reviews/submit/NB100-734)

Earn gift cards/discounts by submitting a publication using this product:  
[www.novusbio.com/publications](http://www.novusbio.com/publications)

