

# Product Datasheet

## CCR10/GPR2 Antibody NB100-707-0.025mg

Unit Size: 0.025 mg

Aliquot and store at -20C or -80C. Avoid freeze-thaw cycles.

[www.novusbio.com](http://www.novusbio.com)



[technical@novusbio.com](mailto:technical@novusbio.com)

### Publications: 2

Protocols, Publications, Related Products, Reviews, Research Tools and Images at:  
[www.novusbio.com/NB100-707](http://www.novusbio.com/NB100-707)

Updated 10/23/2024 v.20.1

Earn rewards for product  
reviews and publications.

Submit a publication at [www.novusbio.com/publications](http://www.novusbio.com/publications)

Submit a review at [www.novusbio.com/reviews/destination/NB100-707](http://www.novusbio.com/reviews/destination/NB100-707)



**NB100-707-0.025mg**

CCR10/GPR2 Antibody

**Product Information**

<b>Unit Size</b>	0.025 mg
<b>Concentration</b>	Please see the vial label for concentration. If unlisted please contact technical services.
<b>Storage</b>	Aliquot and store at -20C or -80C. Avoid freeze-thaw cycles.
<b>Clonality</b>	Polyclonal
<b>Preservative</b>	0.1% Sodium Azide
<b>Isotype</b>	IgG
<b>Purity</b>	Affinity purified
<b>Buffer</b>	10mM KHPO <sub>4</sub> , 140mM NaCl, 1mg/ml BSA

**Product Description**

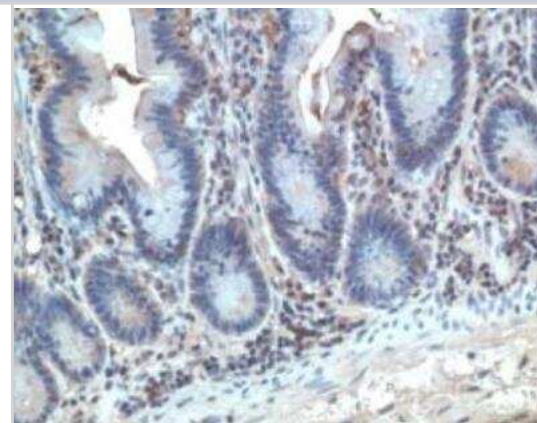
<b>Host</b>	Goat
<b>Gene ID</b>	2826
<b>Gene Symbol</b>	CCR10
<b>Species</b>	Human
<b>Specificity/Sensitivity</b>	Peptide sequence is < 50 % identical to other human chemokine receptors in this region.
<b>Immunogen</b>	Synthetic peptide: VSWGHHYSGDEEDAYSAPLPELC, corresponding to amino acids 9-31 of Human CCR10.

**Product Application Details**

<b>Applications</b>	Western Blot, ELISA, Flow Cytometry, Immunohistochemistry, Immunohistochemistry-Paraffin
<b>Recommended Dilutions</b>	Western Blot 1:500, Flow Cytometry 1:12, ELISA, Immunohistochemistry 1:125, Immunohistochemistry-Paraffin 1:125

**Images**

Immunohistochemistry: CCR10/GPR2 Antibody [NB100-707] - Paraffin section of human tonsil.

**Publications**

Hu SC, Chen GS, Wu CS et al. Rates of cutaneous metastases from different internal malignancies: experience from a Taiwanese medical center. J Am Acad Dermatol 2009-03-01 [PMID: 19056145] (IHC-P, Human)

Wick N, Haluza D, Gurnhofer E et al. Lymphatic Precollectors Contain a Novel, Specialized Subpopulation of Podoplaninlow, CCL27-Expressing Lymphatic Endothelial Cells. Am J Pathol;173(4):1202-1209. 2008-01-01 [PMID: 18772332]





### **Novus Biologicals USA**

10730 E. Briarwood Avenue  
Centennial, CO 80112  
USA  
Phone: 303.730.1950  
Toll Free: 1.888.506.6887  
Fax: 303.730.1966  
nb-customerservice@bio-techne.com

### **Bio-Techne Canada**

21 Canmotor Ave  
Toronto, ON M8Z 4E6  
Canada  
Phone: 905.827.6400  
Toll Free: 855.668.8722  
Fax: 905.827.6402  
canada.inquires@bio-techne.com

### **Bio-Techne Ltd**

19 Barton Lane  
Abingdon Science Park  
Abingdon, OX14 3NB, United Kingdom  
Phone: (44) (0) 1235 529449  
Free Phone: 0800 37 34 15  
Fax: (44) (0) 1235 533420  
info.EMEA@bio-techne.com

### **General Contact Information**

www.novusbio.com  
Technical Support: nb-technical@bio-techne.com  
Orders: nb-customerservice@bio-techne.com  
General: novus@novusbio.com

### **Products Related to NB100-707-0.025mg**

NBL1-08888	CCR10/GPR2 Overexpression Lysate
HAF017	Rabbit anti-Goat IgG Secondary Antibody [HRP (Horseradish Peroxidase)]
HAF109	Donkey anti-Goat IgG Secondary Antibody [HRP (Horseradish Peroxidase)]
NB410-28088-1mg	Goat IgG Isotype Control

### **Limitations**

This product is for research use only and is not approved for use in humans or in clinical diagnosis. Primary Antibodies are guaranteed for 1 year from date of receipt.

For more information on our 100% guarantee, please visit [www.novusbio.com/guarantee](http://www.novusbio.com/guarantee)

Earn gift cards/discounts by submitting a review: [www.novusbio.com/reviews/submit/NB100-707](http://www.novusbio.com/reviews/submit/NB100-707)

Earn gift cards/discounts by submitting a publication using this product:  
[www.novusbio.com/publications](http://www.novusbio.com/publications)



