

Product Datasheet

CC Chemokine Receptor D6 Antibody NB100-703-0.025mg

Unit Size: 0.025 mg

Aliquot and store at -20C or -80C. Avoid freeze-thaw cycles.

www.novusbio.com



technical@novusbio.com

Protocols, Publications, Related Products, Reviews, Research Tools and Images at:
www.novusbio.com/NB100-703

Updated 4/8/2025 v.20.1

Earn rewards for product
reviews and publications.

Submit a publication at www.novusbio.com/publications

Submit a review at www.novusbio.com/reviews/destination/NB100-703



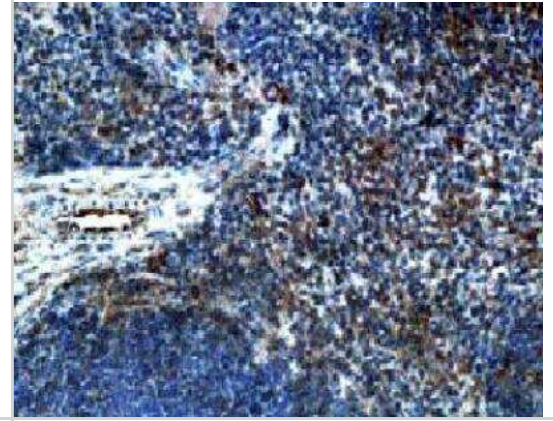
NB100-703-0.025mg**CC Chemokine Receptor D6 Antibody**

| Product Information | |
|------------------------------------|--|
| Unit Size | 0.025 mg |
| Concentration | Please see the vial label for concentration. If unlisted please contact technical services. |
| Storage | Aliquot and store at -20C or -80C. Avoid freeze-thaw cycles. |
| Clonality | Polyclonal |
| Preservative | 0.1% Sodium Azide |
| Isotype | IgG |
| Purity | Immunogen affinity purified |
| Buffer | 10 mM KHPO ₄ , 140 mM NaCl, BSA @ 1mg/ml |
| Product Description | |
| Host | Goat |
| Gene ID | 1238 |
| Gene Symbol | ACKR2 |
| Species | Mouse |
| Specificity/Sensitivity | Peptide sequence is < 50 % identical to other mouse chemokine receptors in this region. |
| Immunogen | Synthetic peptide SSSIYDYDYLDGMTILVCRKDEVLSFGR corresponding to aa 18-45 of mouse beta chemokine receptor D6 |
| Product Application Details | |
| Applications | ELISA, Flow Cytometry, Immunohistochemistry, Immunohistochemistry-Paraffin |
| Recommended Dilutions | Flow Cytometry 1-5ul/ml, ELISA 1:50000, Immunohistochemistry 1:250, Immunohistochemistry-Paraffin 1:250 |

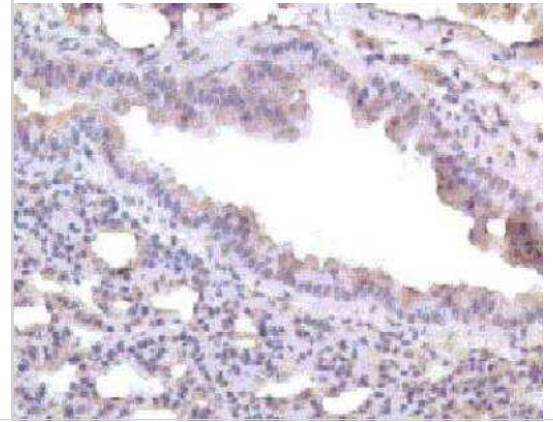


Images

Immunohistochemistry: CC Chemokine Receptor D6 Antibody [NB100-703] - Antibody to mouse beta chemokine receptor D6 on paraffin section of mouse spleen.



Immunohistochemistry: CC Chemokine Receptor D6 Antibody [NB100-703] - Antibody to mouse beta chemokine receptor D6 on paraffin section of mouse lung





Novus Biologicals USA

10730 E. Briarwood Avenue
Centennial, CO 80112
USA
Phone: 303.730.1950
Toll Free: 1.888.506.6887
Fax: 303.730.1966
nb-customerservice@bio-techne.com

Bio-Techne Canada

21 Canmotor Ave
Toronto, ON M8Z 4E6
Canada
Phone: 905.827.6400
Toll Free: 855.668.8722
Fax: 905.827.6402
canada.inquires@bio-techne.com

Bio-Techne Ltd

19 Barton Lane
Abingdon Science Park
Abingdon, OX14 3NB, United Kingdom
Phone: (44) (0) 1235 529449
Free Phone: 0800 37 34 15
Fax: (44) (0) 1235 533420
info.EMEA@bio-techne.com

General Contact Information

www.novusbio.com
Technical Support: nb-technical@bio-techne.com
Orders: nb-customerservice@bio-techne.com
General: novus@novusbio.com

Limitations

This product is for research use only and is not approved for use in humans or in clinical diagnosis. Primary Antibodies are guaranteed for 1 year from date of receipt.

For more information on our 100% guarantee, please visit www.novusbio.com/guarantee

Earn gift cards/discounts by submitting a review: www.novusbio.com/reviews/submit/NB100-703

Earn gift cards/discounts by submitting a publication using this product:
www.novusbio.com/publications

