

# Product Datasheet

## Von Willebrand Factor Antibody (21-43) NB100-65194-0.025ml

Unit Size: 0.025 ml

Store at 4C short term. Aliquot and store at -20C long term. Avoid freeze-thaw cycles.

[www.novusbio.com](http://www.novusbio.com)



[technical@novusbio.com](mailto:technical@novusbio.com)

Protocols, Publications, Related Products, Reviews, Research Tools and Images at:  
[www.novusbio.com/NB100-65194](http://www.novusbio.com/NB100-65194)

Updated 3/30/2022 v.20.1

Earn rewards for product  
reviews and publications.

Submit a publication at [www.novusbio.com/publications](http://www.novusbio.com/publications)

Submit a review at [www.novusbio.com/reviews/destination/NB100-65194](http://www.novusbio.com/reviews/destination/NB100-65194)



**NB100-65194-0.025ml**

Von Willebrand Factor Antibody (21-43)

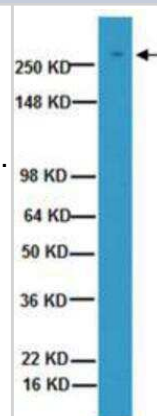
Product Information	
Unit Size	0.025 ml
Concentration	0.4 mg/ml
Storage	Store at 4C short term. Aliquot and store at -20C long term. Avoid freeze-thaw cycles.
Clonality	Monoclonal
Clone	21-43
Preservative	0.1% Sodium Azide
Isotype	IgG1
Purity	Protein A purified
Buffer	PBS (pH 7.4), 0.2% BSA and 50% (v/v) Glycerol

Product Description	
Host	Mouse
Gene ID	7450
Gene Symbol	VWF
Species	Human
Marker	Endothelial Cell Marker
Immunogen	Purified Human Factor VIII complex

Product Application Details	
Applications	Western Blot, Immunocytochemistry/Immunofluorescence, Immunohistochemistry, Immunohistochemistry-Frozen, Immunohistochemistry-Paraffin, Radioimmunoassay
Recommended Dilutions	Western Blot 1:100-1:2000, Immunohistochemistry 1:10-1:500, Immunocytochemistry/Immunofluorescence 1:10-1:500, Immunohistochemistry-Paraffin 1:50, Immunohistochemistry-Frozen 1:50, Radioimmunoassay 1:100-1:2000
Application Notes	This antibody reacts strongly with human von Willebrand Factor or Factor VIII Related Antigen in both plasma, using RIA or ELISA, and in tissues by immunofluorescence or immunoperoxidase staining. The antibody is suitable for use with frozen and formalin fixed tissue sections. Detect a band at ~310 by Western Blot.

**Images**

Western Blot: Von Willebrand Factor Antibody (21-43) [NB100-65194] - Human Placenta lysate was resolved by electrophoresis, transferred to PVDF membrane and probed with anti-von Willebrand Factor (1:1000 dilution). Proteins were visualized using a goat anti-mouse secondary antibody conjugated to HRP and a chemiluminescence detection system. Arrow indicates protein von Willebrand Factor (~310 kDa).





### **Novus Biologicals USA**

10730 E. Briarwood Avenue  
Centennial, CO 80112  
USA

Phone: 303.730.1950  
Toll Free: 1.888.506.6887  
Fax: 303.730.1966  
novus@novusbio.com

### **Bio-Techne Canada**

21 Canmotor Ave  
Toronto, ON M8Z 4E6  
Canada

Phone: 905.827.6400  
Toll Free: 855.668.8722  
Fax: 905.827.6402  
canada.inquires@bio-techne.com

### **Bio-Techne Ltd**

19 Barton Lane  
Abingdon Science Park  
Abingdon, OX14 3NB, United Kingdom

Phone: (44) (0) 1235 529449  
Free Phone: 0800 37 34 15  
Fax: (44) (0) 1235 533420  
info.EMEA@bio-techne.com

### **General Contact Information**

www.novusbio.com  
Technical Support: technical@novusbio.com  
Orders: orders@novusbio.com  
General: novus@novusbio.com

### **Limitations**

This product is for research use only and is not approved for use in humans or in clinical diagnosis. Primary Antibodies are guaranteed for 1 year from date of receipt.

For more information on our 100% guarantee, please visit [www.novusbio.com/guarantee](http://www.novusbio.com/guarantee)

Earn gift cards/discounts by submitting a review: [www.novusbio.com/reviews/submit/NB100-65194](http://www.novusbio.com/reviews/submit/NB100-65194)

Earn gift cards/discounts by submitting a publication using this product:  
[www.novusbio.com/publications](http://www.novusbio.com/publications)

