

Product Datasheet

Integrin alpha 2b/CD41 Antibody (PM6/248) - BSA Free NB100-63779-0.025mg

Unit Size: 0.025 mg

Store at 4C short term. Aliquot and store at -20C long term. Avoid freeze-thaw cycles.

www.novusbio.com



technical@novusbio.com

Protocols, Publications, Related Products, Reviews, Research Tools and Images at:
www.novusbio.com/NB100-63779

Updated 9/9/2025 v.20.1

Earn rewards for product
reviews and publications.

Submit a publication at www.novusbio.com/publications

Submit a review at www.novusbio.com/reviews/destination/NB100-63779



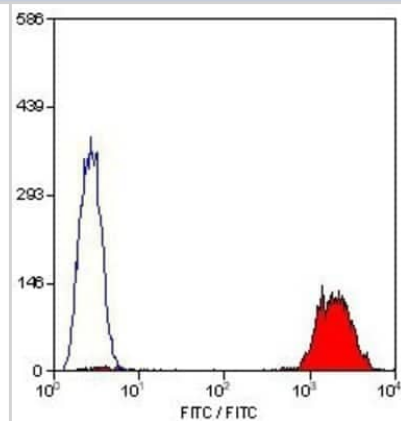
NB100-63779-0.025mg

Integrin alpha 2b/CD41 Antibody (PM6/248) - BSA Free

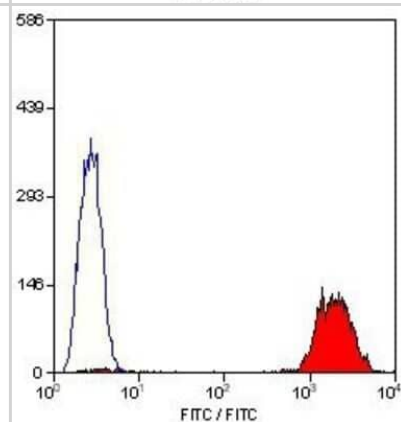
Product Information	
Unit Size	0.025 mg
Concentration	1.0 mg/ml
Storage	Store at 4C short term. Aliquot and store at -20C long term. Avoid freeze-thaw cycles.
Clonality	Monoclonal
Clone	PM6/248
Preservative	0.09% Sodium Azide
Isotype	IgG1
Purity	Protein A purified
Buffer	PBS
Product Description	
Description	Novus Biologicals Mouse Integrin alpha 2b/CD41 Antibody (PM6/248) - BSA Free (NB100-63779) is a monoclonal antibody validated for use in Flow. All Novus Biologicals antibodies are covered by our 100% guarantee.
Host	Mouse
Gene ID	3674
Gene Symbol	ITGA2B
Species	Human
Reactivity Notes	Predicted cross-reactivities: Baboon
Specificity/Sensitivity	NB100-63779 recognizes the human CD41 cell surface antigen, a 140kD glycoprotein expressed by platelets and megakaryocytes. CD41 is also known as platelet glycoprotein IIb, and functions as a receptor for fibrinogen, fibronectin and vWF. It has not been established if clone PM6/248 recognizes free CD41 or CD41 only when complexed with CD61. However, antibody binding is reduced in the presence of EDTA suggesting that the epitope recognized is dependent upon an intact CD41/61 complex.
Immunogen	Human platelet plasma membranes
Product Application Details	
Applications	Flow Cytometry
Recommended Dilutions	Flow Cytometry 1:10-1:1000
Application Notes	This antibody did not work for western blot analysis.

Images

Flow Cytometry: Integrin alpha 2b/CD41 Antibody (PM6/248) [NB100-63779] - Analysis using the FITC conjugate of NB100-63779. Staining of human peripheral blood platelets.



Flow Cytometry: Integrin alpha 2b/CD41 Antibody (PM6/248) [NB100-63779] - Staining of human peripheral blood platelets with MOUSE ANTI HUMAN CD41: FITC.





Novus Biologicals USA

10730 E. Briarwood Avenue
Centennial, CO 80112
USA
Phone: 303.730.1950
Toll Free: 1.888.506.6887
Fax: 303.730.1966
nb-customerservice@bio-techne.com

Bio-Techne Canada

21 Canmotor Ave
Toronto, ON M8Z 4E6
Canada
Phone: 905.827.6400
Toll Free: 855.668.8722
Fax: 905.827.6402
canada.inquires@bio-techne.com

Bio-Techne Ltd

19 Barton Lane
Abingdon Science Park
Abingdon, OX14 3NB, United Kingdom
Phone: (44) (0) 1235 529449
Free Phone: 0800 37 34 15
Fax: (44) (0) 1235 533420
info.EMEA@bio-techne.com

General Contact Information

www.novusbio.com
Technical Support: nb-technical@bio-
techne.com
Orders: nb-customerservice@bio-techne.com
General: novus@novusbio.com

Limitations

This product is for research use only and is not approved for use in humans or in clinical diagnosis. Primary Antibodies are guaranteed for 1 year from date of receipt.

For more information on our 100% guarantee, please visit www.novusbio.com/guarantee

Earn gift cards/discounts by submitting a review: www.novusbio.com/reviews/submit/NB100-63779

Earn gift cards/discounts by submitting a publication using this product:
www.novusbio.com/publications

